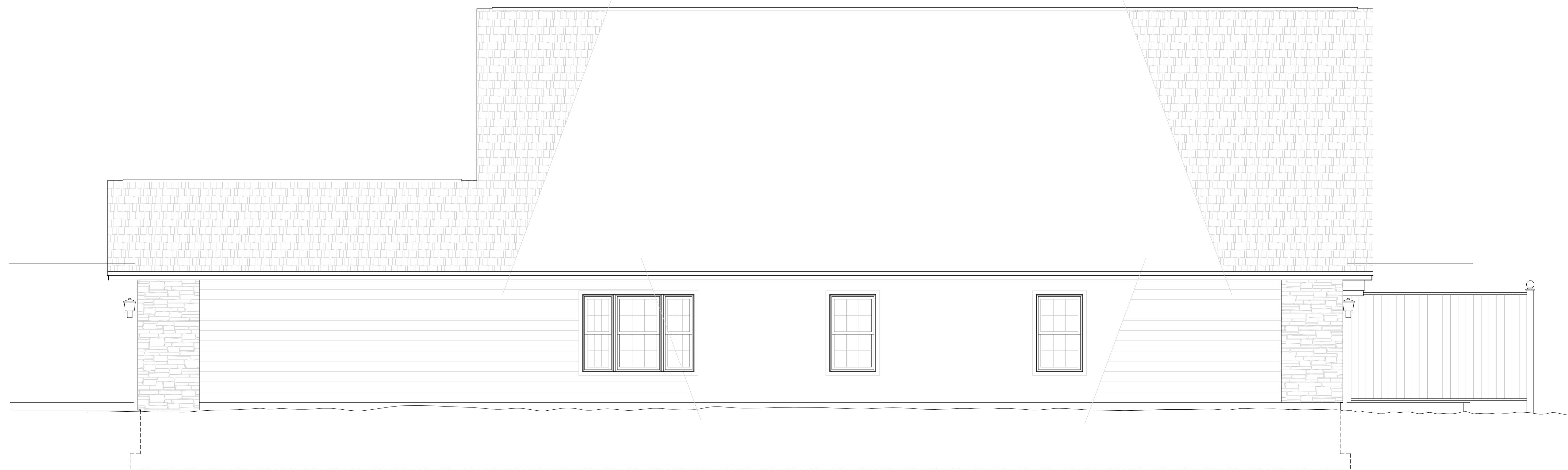


FRONT ELEVATION 1/4" = 1'-0"



RIGHT SIDE ELEVATION 1/4" = 1'-0"

PROJECT NO. 0110 A
 DATE AUGUST 6, 2010
 REVISED:

HOLLINGSWORTH ASSOCIATES, ARCHITECTS

ARCHITECTS ENGINEERS PLANNERS

13257 ENGLISH COVE, GULFPORT, MISSISSIPPI 39503

molly3@cableone.net

404-783-7792

1-STORY 4 BEDROOM DUPLEX
 TOWNHOUSE FAMILY RESIDENCE

WAUKEE FAMILY HOUSING

WAUKEE, IOWA

BUILDING ELEVATIONS
 AND NOTES

A
 4
 SHEET 6 OF X



REAR ELEVATION 1/4" = 1'-0"



LEFT SIDE ELEVATION 1/4" = 1'-0"

PROJECT NO. 0110 A
 DATE AUGUST 6, 2010
 REVISED:

HOLLINGSWORTH ASSOCIATES, ARCHITECTS
 ARCHITECTS ENGINEERS PLANNERS

13257 ENGLISH COVE, GULFPORT, MISSISSIPPI 39503
 404-783-7792
 molly3@cableone.net

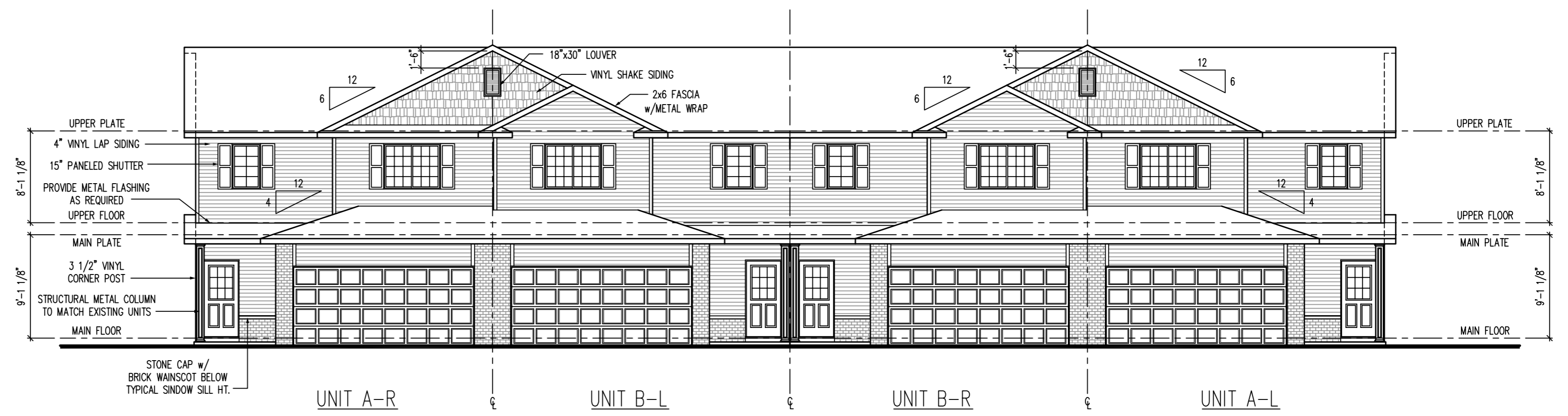
1-STORY 4 BEDROOM DUPLEX
 TOWNHOUSE FAMILY RESIDENCE

WAUKEE FAMILY HOUSING
 WAUKEE, IOWA

BUILDING ELEVATIONS
 AND NOTES

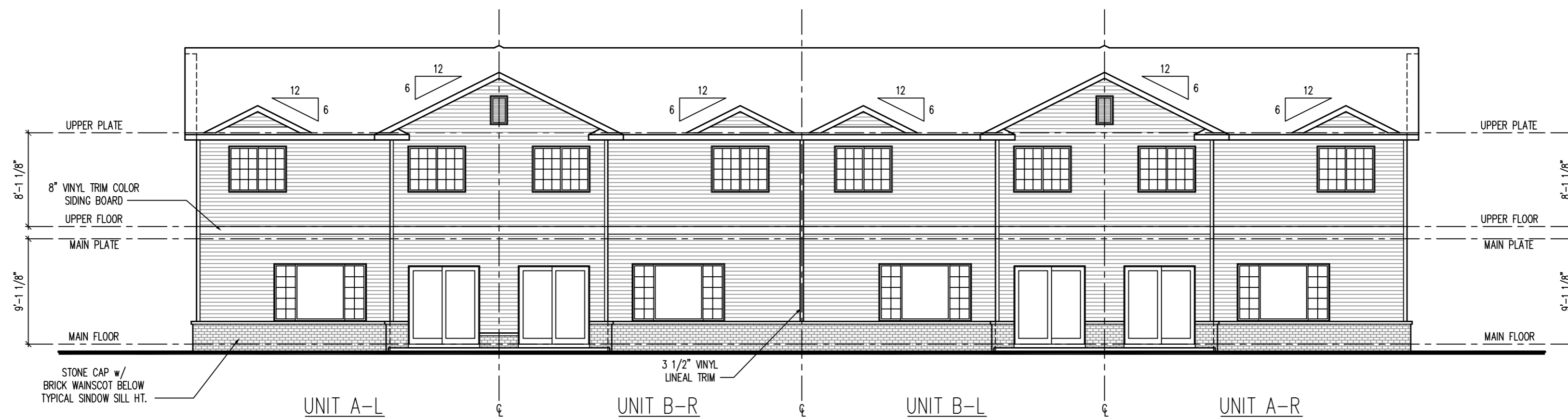
A
 4

SHEET 6 OF X



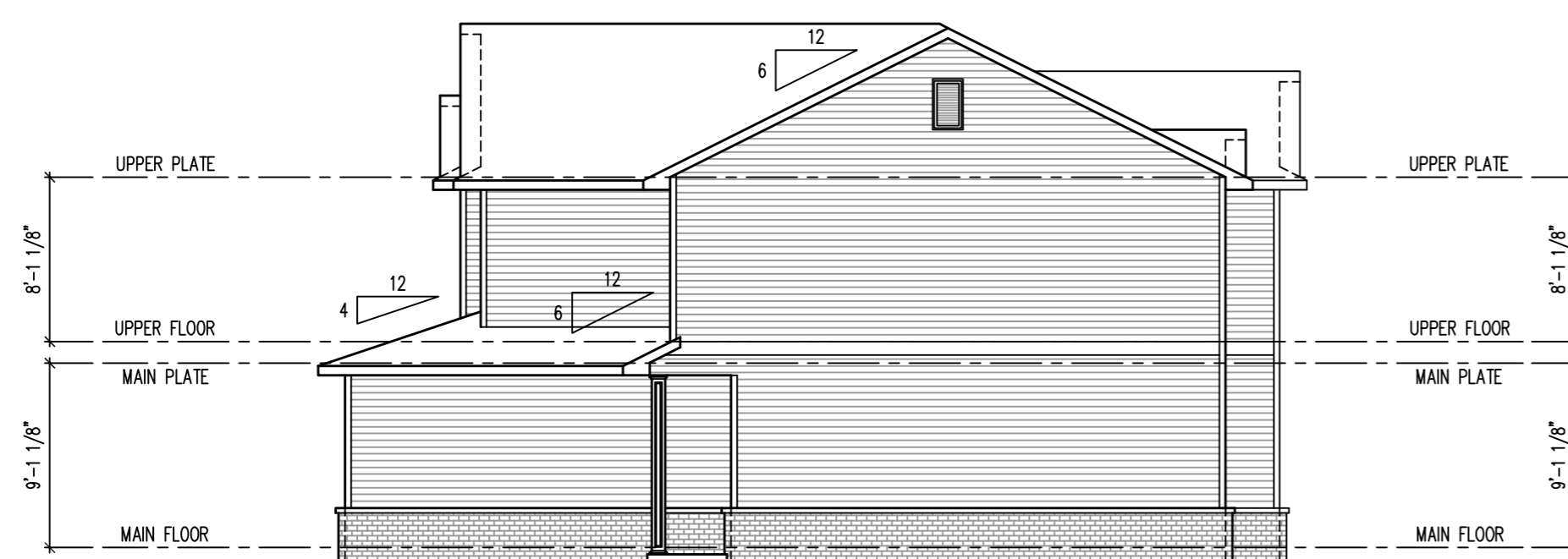
FRONT ELEVATION

SCALE: 1/8"=1'-0"



REAR ELEVATION

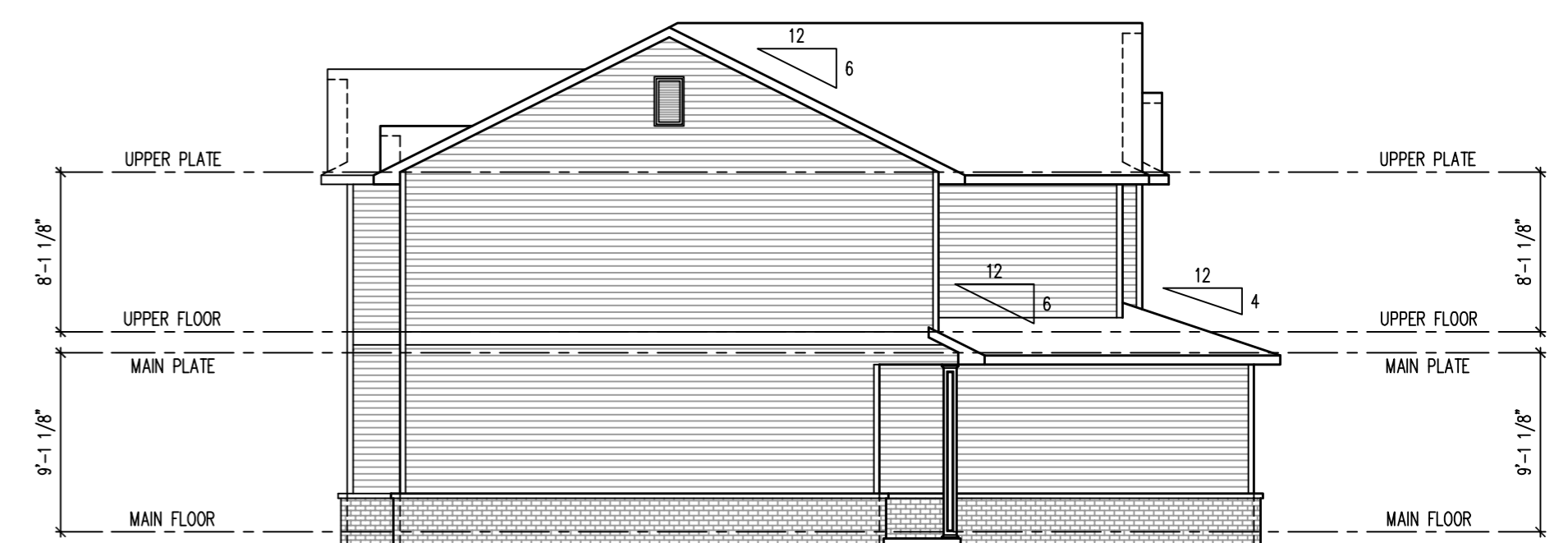
SCALE: 1/8"=1'-0"



UNIT A-L

RIGHT ELEVATION

SCALE: 1/8"=1'-0"



UNIT A-R

LEFT ELEVATION

SCALE: 1/8"=1'-0"