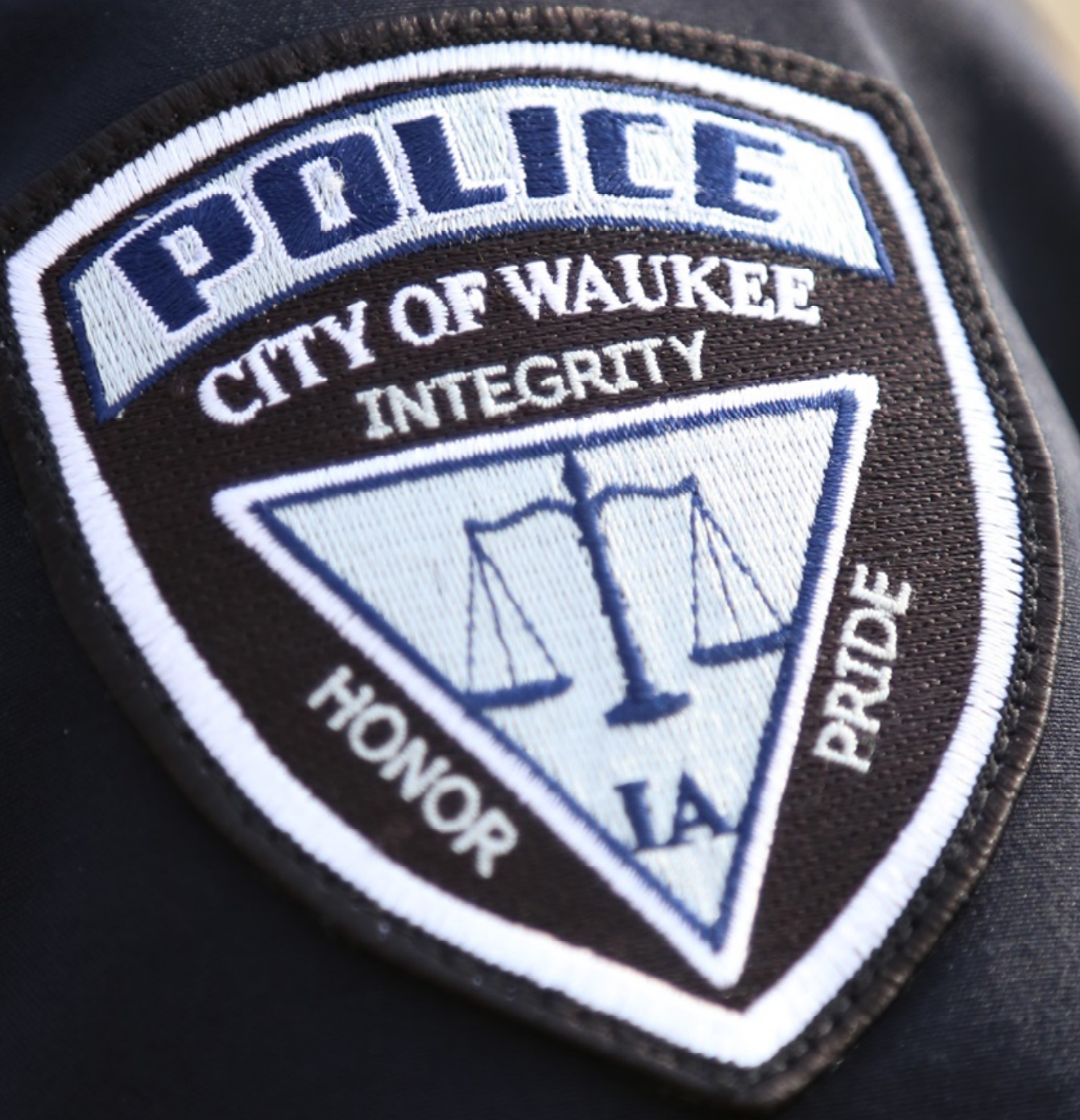


Waukeee Police Department  
ANNUAL REPORT

2019



# MESSAGE FROM THE CHIEF

In 2019 we had a very successful year for the Waukee Police Department as we faced new challenges during such unprecedented times. From my chief's chair, it's fun to look back at the previous year and recognize all the accomplishments and changes that transpired at the police department. Not only is the City's commercial and residential development growing at an exciting rate, but as you will see so are the volume of activities at the Police Department.

A couple of years ago we changed the name of our 'Patrol Division' to the Community Protection Division (CPD), led by Lt. Scott Cunningham. The reason for the change was to have a name that better reflects the full gambit of services that the Division provided to our community members. The CPD provides the most diverse types of services in the Department, ranging from traffic enforcement, responding to calls for service, our bike patrol, SERT (Suburban Emergency Response Team), and the School Resource Officers (SRO's) all while executing our focus on community-oriented policing.

During 2019, our CPD had an extremely busy year, responding to 13,639 calls for service, issued 1,719 citations, and 2,100 warnings. The Division also had several community outreach contacts with our community members including, but not limited to: working collaboratively with the Waukee Community School District in handing out computers and free lunches, stopping at lemonade stands, and stopping to engage our youth in the community at Centennial Park to play ball.

Our Criminal Investigations Division, the newest Division at the WPD, has grown to 4 officers led by Lt. Jeremy Long. The Division provides vital investigative services to our community members who are victims of property, persons, narcotics, and computer crimes. The Division might be small, however, they handle a large caseload, addressing 166 property crimes, 67 crimes against persons, 15 narcotic crimes, and a variety of other cases.

The Final Division at the Waukee PD is the Support Operations Division led by Lt. Jeff Mellencamp. This Division is exactly what its name suggests, it supports all aspects of the departments to make the department run efficiently. Our two Records Techs, Abbey Christensen and Ashley Morris have done a fantastic job of maintaining all public records regarding crimes, traffic, and all other incidents or events. They truly are the face of the department, always greeting our community members with a smile as they provide assistance in a variety of services such as fingerprinting, where they completed 396 sets of civilian fingerprints, 794 records requests, and somehow find the time to assist in the department's 25 community outreach programs.

The final aspect of the Support Operations Division is also one of the most important, our Community Outreach programs led by Sgt. Mackenzie Sposeto. She provides oversight and leadership to the Department's 25 community outreach programs. These programs are at the heart and soul of the Waukee Police Department; allowing our community members a positive encounter with the men and women of the Waukee PD. It's these programs that allow us to build relationships that will create a solid foundation for the city's future.

As you can see it's been another busy year. I've hit just a few of the highlights the department accomplished in 2019 and I look forward to an even better 2020. In closing, I want to say that all of the men and women at the Waukee PD feel it is an honor and a privilege to work in a city where our community members support and appreciate our officers as they execute the mission of providing community-oriented Public Safety services. Thank you for all of your prayers and great acts of kindness throughout 2019.

Be safe and stay healthy.

**John F. Quinn**  
**Chief of Police**

# TABLE OF CONTENTS

<b>Message From the Chief .....</b>	<b>1</b>
<b>Mission and Values .....</b>	<b>4</b>
<b>Organizational Chart .....</b>	<b>5</b>
<b>Command Staff .....</b>	<b>6</b>
<b>Sergeant Staff .....</b>	<b>7</b>
<b>Officers and Administrative Staff .....</b>	<b>8</b>
<b>Community Protection .....</b>	<b>9</b>
<b>School Resource Officers .....</b>	<b>10</b>
<b>Growing the Force .....</b>	<b>11</b>
<b>Protection Plans.....</b>	<b>12</b>
<b>Criminal Investigations Division.....</b>	<b>13</b>
<b>Evidence .....</b>	<b>14</b>
<b>Support Operations Division.....</b>	<b>15</b>
<b>Community Outreach .....</b>	<b>16</b>
<b>Contact Information .....</b>	<b>22</b>

# MISSION AND VALUES

## OUR MISSION

The Waukeee Police Department aims to enhance the quality of life, safety and security of our community. We are dedicated to providing a safe and secure living and working environment.

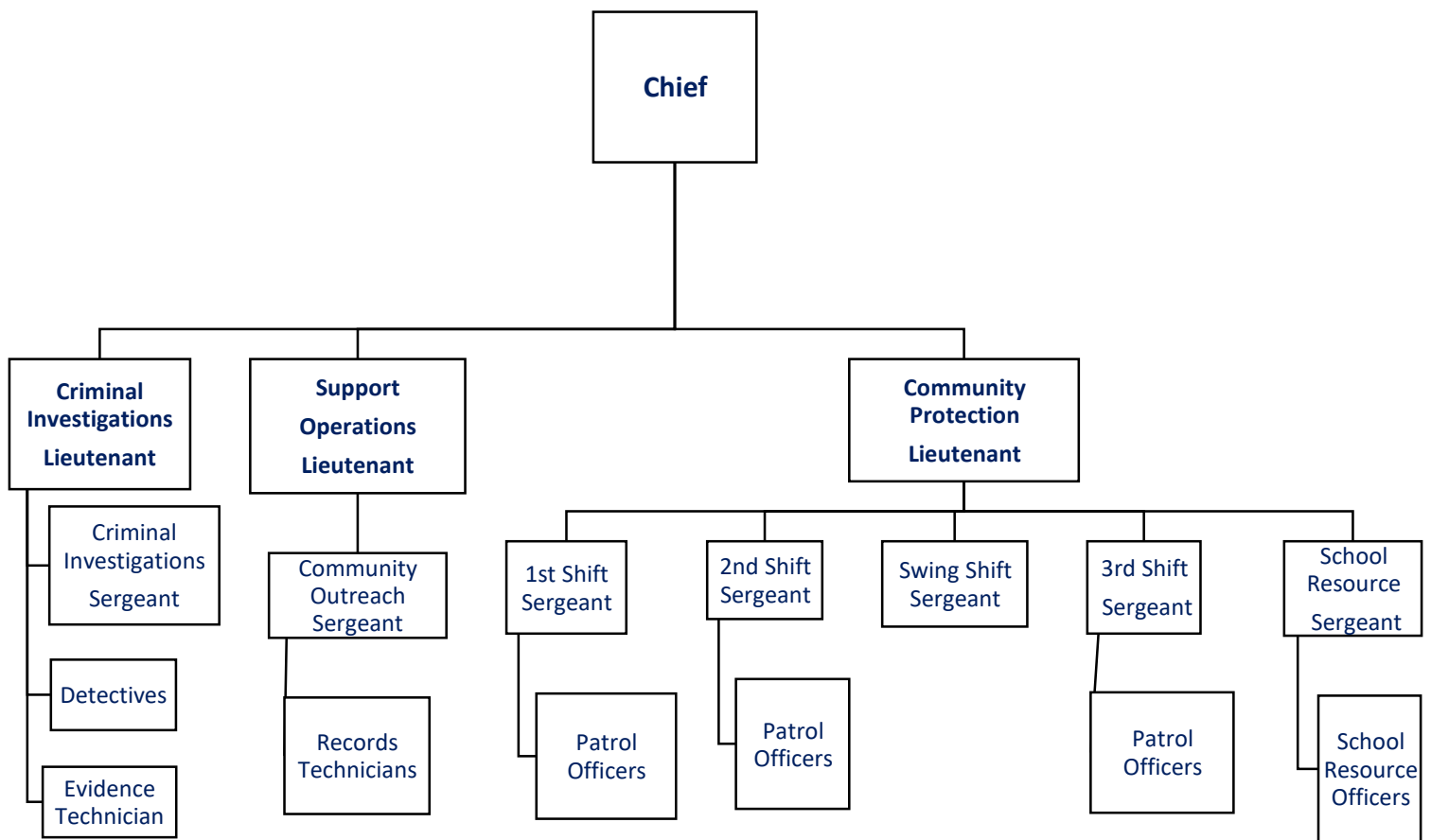
## OUR VALUES

Honor, Integrity and Pride are our top values displayed by our officers. We strive to uphold these values as we respond to the needs of our community.



# ORGANIZATIONAL CHART

The Waukee Police Department employs 26 sworn officers who serve a community of nearly 23,000 residents. In addition, the department employs three civilians who provide essential services in Records and Property & Evidence.



# POLICE DEPARTMENT COMMAND STAFF

## Chief of Police



Chief John Quinn  
Chief of Police

## Lieutenant Command Staff



Lt. Scott Cunningham  
Community Protection



Lt. Jeremy Long  
Criminal Investigations



Lt. Jeff Mellencamp  
Support Operations

# POLICE DEPARTMENT PERSONNEL

## Sergeant Staff



Sgt. Mackenzie Sposeto  
Community Outreach



Sgt. Hector Arias  
Criminal Investigations



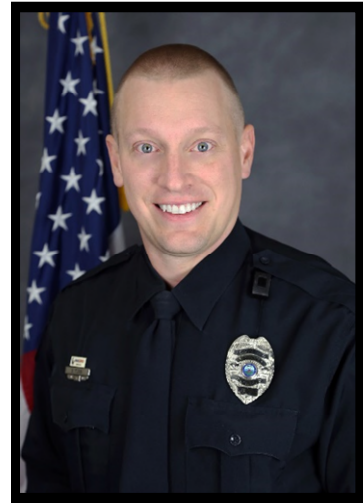
Sgt. Brandon Pettit  
Community Protection



Sgt. Neil Lemke  
Community Protection



Sgt. Robert Gitzen  
Community Protection



Sgt. Brian Murra  
Community Protection

# POLICE DEPARTMENT PERSONNEL

## Officers and Administrative Staff



Rod Schettler  
Community Protection



Jon Oakley  
Community Protection



Brett Armstrong  
Community Protection



Josh Minikus  
Community Protection



Susan Kies  
Criminal Investigations



Kelli Cichoski  
Criminal Investigations



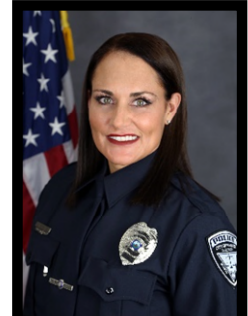
Kathryn Guess  
Community Protection



Scott Kinney  
Community Protection



Dace Richardson  
Community Protection



Corby Robbins  
Community Protection



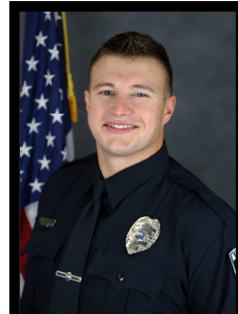
Jeremiah Frueh  
Community Protection



Christopher Kickbush  
Community Protection



Nick Gilchrist  
Community Protection



Kyle Terlouw  
Community Protection



Bryan Levsen  
Community Protection



Josh Eastcott  
Community Protection



McKenna Olberding  
Community Protection



Lea Scaletta  
Evidence Technician



Ashley Morris  
Records Technician



Abbey Christensen  
Records Technician

# COMMUNITY PROTECTION DIVISION

## Community Protection

The Community Protection Division responds to calls for service, enforces criminal and traffic codes, helps with crime prevention, preliminary investigations of offenses, incidents and more. They are the most visible of all the divisions and operate on three shifts, giving the city 24/7 coverage.



## Bike Patrol

In the warmer months, the Waukee Community Protection Division can be seen patrolling the street on two wheels. There are currently four bike patrol officers who serve on the team. They enjoy riding around our community and meeting Waukee Residents in their own neighborhoods.

## SERT

Suburban Emergency Response Team (SERT) provides specialized tactical and crisis negotiation responses to critical incidents and high risk situations on a 24 hour call status. Special operations conducted by SERT may include high risk search or arrest warrants, barricaded subjects, hostage rescue, or dignitary protection. The Waukee Police Department has one crisis negotiator, one assistant team leader and one entry operator who serve on the area metro SERT.

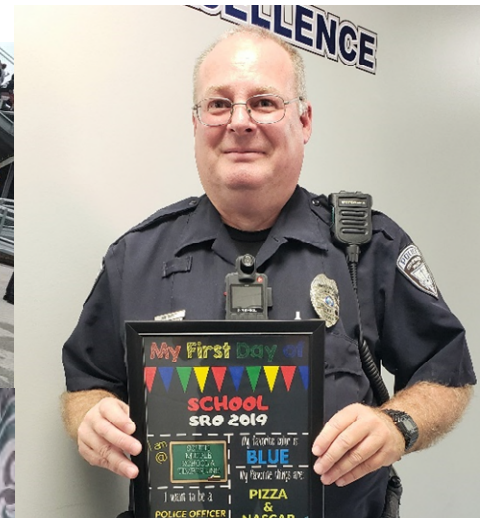
# COMMUNITY PROTECTION DIVISION

## School Resource Officers

The School Resource Officer (SRO) program is a partnership with the Waukee Community School District to provide Waukee Police Officers within the schools. SROs are certified laws enforcement Officers and act as an educator in safety and law related issues, a resource to the school administration, and a link between the police department and the student community.

SROs are involved in a variety of roles aimed at violence and crime prevention in the schools. In addition to maintaining a safe school environment, throughout the course of the year, SROs teach classes on self-defense, internet safety, and tobacco, drug and alcohol prevention.

The Waukee Police Department has three SROs who work within the Waukee Community Schools. Sergeant Sposeto is assigned to Prairieview School and Waukee Middle School, Officer Jon Oakley is assigned to South Middle School and Timberline, and Officer Nick Gilchrist is assigned to Waukee High School.



# GROWING THE FORCE

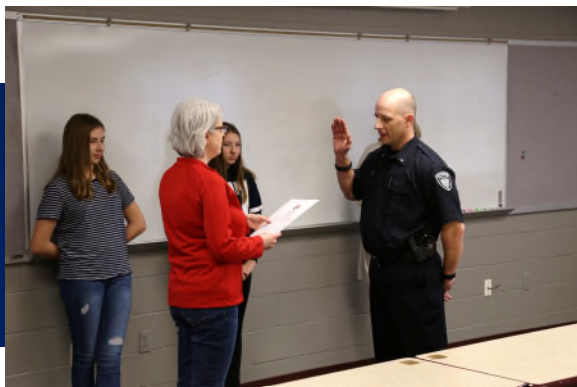
## New Officers

We added three new officers to our department this year. Officers Bryan Levsen, Josh Eastcott and McKenna Olberding all graduated from the Iowa Law Enforcement Academy in 2019. They will complete additional months of training with a Waukee Field Training Officer before patrolling individually.



## Promotions

In March, Sergeant Jeff Mellencamp was promoted to the rank of Lieutenant. He brings 21 years of law enforcement experience to his new position as he oversees the Support Operations Division. Officer Brian Murra was promoted to Sergeant in August. He was well-known for his impact as a School Resource Officer at Waukee High School and has been with the Department since 2012.



# PROTECTION PLANS

## Drug Drop Box

Inside our lobby we offer a drug drop box available for proper disposal of unwanted, unused or expired medications. We also participate in the DEA's National Prescription Drug Take-Back Day to help combat the epidemic of addiction, overdose and death due to abuse of prescription drugs. This year we collected 266 pounds of prescription drugs to be destroyed.



## House Check Watch

The Waukee Police Department also offers random security checks for residents leaving their homes or businesses vacant for an extended amount of time. This year we were able to keep an extra watch on over 54 individual homes.

## Police Chaplain

For the second year, Pastor Patrick Quaid, of Lutheran Church of Hope Waukee serves as our Police Chaplain. The Police Chaplain Program creates a partnership with leaders of the community to respond and assist police and community members during times of crisis.



# CRIMINAL INVESTIGATIONS DIVISION

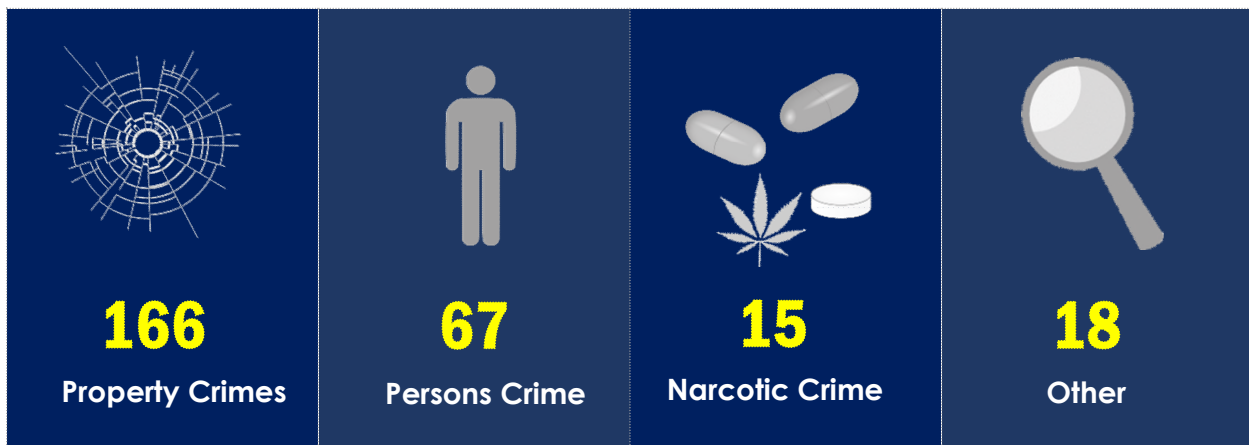
## Criminal Investigations

The Criminal Investigation Division (CID) divides its case work into divisions. These divisions are Crimes against Person/Property Crimes and Narcotics/Computer Crimes. While there is a breakdown of case types within CID, no detective is limited to any specific type of investigation. Other tasks could include background checks, agency assists, internal investigations, intelligence gathering and other inquiries that are not assigned case numbers.

In 2019 Sgt. Arias was assigned to the CID and has started establishing crime mapping capabilities for the division. This has allowed the CID to view and generate statistical crime information within the city and allows us to identify areas being targeted by criminal activity.

Detective Susan Kies, who in addition to her narcotics investigations, has increased her responsibilities and taken on computer and electronic device based investigations. She also became the Waukee Police Department's representative as an affiliate Internet Crimes Against Children (ICAC) member.

Detective Kelli Cichoski has a significant role in assisting the CID with the increased caseload experienced in 2019. Her primary role is the persons and property crimes. The division has maintained a successful clearance rate of approximately 82% for cases.



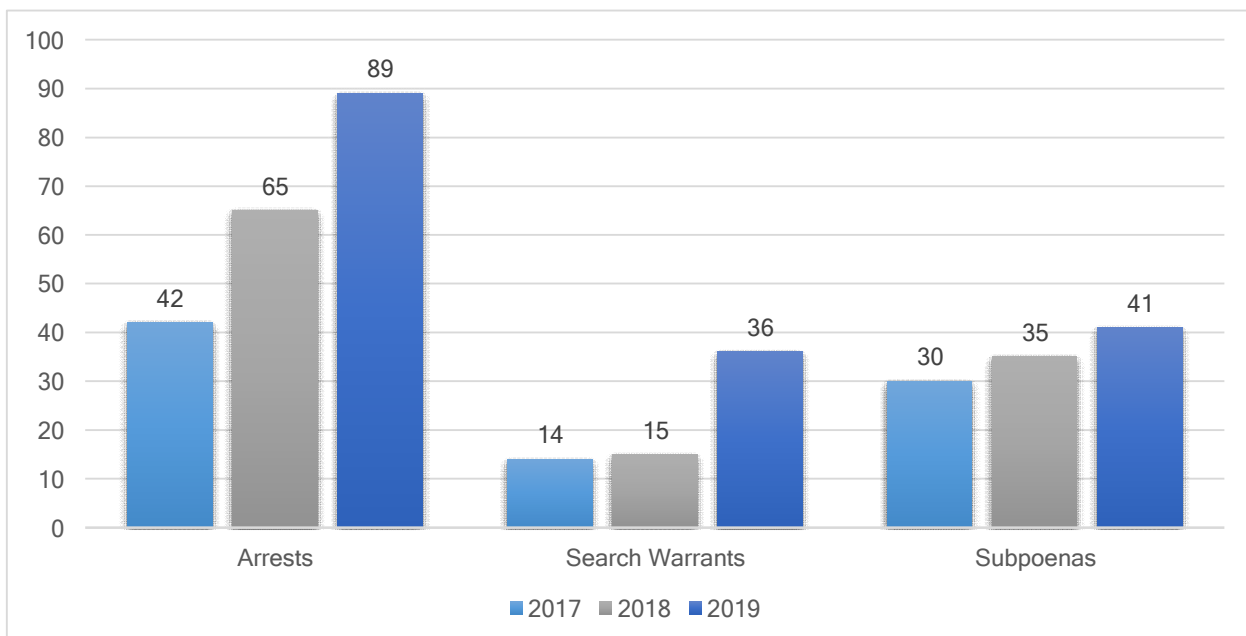
# CRIMINAL INVESTIGATIONS DIVISION

## Evidence

Evidence Technician, Lea Scaletta, is responsible for all digital evidence. This includes updating storage and retention and overseeing upgrades to the department's body cameras. She also assists the CID with crime scenes. In 2019, Scaletta has made several improvements to the evidence process and evidence room. As a result, she has created a process to work closely with the County Attorney's office to get immediate disposal orders on evidence once all court proceedings have been completed. She has attended regular trainings to obtain skillsets to properly handle and process evidence at a crime scene, transportation of evidence and logging evidence into the evidence room. She became a member of the International Association for Identification (IAI) which is an evidence and identification association and a great resource for training, equipment and best practices.

## Case Increases

Case load increased by a little less than 20% from 2018 to 2019. On average, approximately 22 new cases were assigned to the CID every month in 2019 which substantially increased the number of court documents applied for and served including arrest and search warrants.



# SUPPORT OPERATIONS DIVISION

## Support Operations

The Support Operations Division is just that, it supports all aspects of the department in order to make us run efficiently. The division is run by Lt. Jeff Mellencamp and he runs the day to day building and vehicle management. He is also working on the details for the future Public Safety Building.

Lt. Mellencamp oversees two Records Technicians who are tasked with maintaining all public records: crimes, traffic and all other incidents or events. Access to all records information is governed by local, state and federal laws. The public can request records from the department during normal business hours.

Another vital task performed under this division is civilian fingerprinting services. Last year, the department completed 396 sets of civilian fingerprints.

Rounding out the division is Sgt. Mackenzie Sposeto who plans the community outreach programs. These include public events, safety talks, certifying crime free multi-housing units and more.



**794**

Records Requests



**396**

Civilian Fingerprints



**25**

Community Outreach Programs

# COMMUNITY OUTREACH

## Bike With Cops

For the second year in a row, experienced riders in grades 2 through 6 get to participate in our city bike ride, Bike With Cops. With 22 participants this year, the kids learn about bike safety, enjoy a two-mile ride with officers and then eat lunch with the Police Department.

## Safety City

Each year we host Safety City for students entering Kindergarten at the Waukee Community School District. Students learn about safety from officers and volunteers during this week-long course. Topics include safe street-crossing, safety belt usage, bullying, 911, bus rules, fire safety and more. This highly popular class fills up quickly, but we were able to provide 6 sessions this year with 262 incoming Kindergarteners.



# COMMUNITY OUTREACH

## WASP

The Waukee Area Seniors and Police (WASP) group involves senior citizens in the Waukee area and aims to “Take the Sting Out of Crime!” The concept is to create a relationship between police and these community members while learning and voicing concerns regarding the 55 and older population. During the year, the group meets on the last Wednesday of the month for a lunch and learn style program.



## Public Safety Day

The Waukee Police and Fire Departments join forces each year to host a Public Safety Day. This popular event is attended by several thousands and each get the chance to enjoy dinner, fire truck rides, a rollover and impaired goggles simulator, obstacle courses and more. This free event is not only a police and fire favorite, but a family community favorite!



# COMMUNITY OUTREACH



# COMMUNITY OUTREACH

## Coffee With a Cop

This October we hosted our annual Coffee With a Cop at the local shop, The Coffeesmith. Members of the community had a chance to stop in, grab a coffee and chat with officers.



## Citizen's Academy

The Waukeee Citizen's Academy graduated its 7<sup>th</sup> class this year. This program involves citizens or business members of Waukeee and lets them participate in a 10 week, 30 hour glimpse into the life of a police officer. The Academy strengthens the attendees understanding of not only their police department, but law enforcement in general.

During this program, participants learn about community protection and patrol, crime scene investigations and ethics. They get a hands on experience with defense tactics, re-enacting traffic stops and search warrants, OWI investigations, firearm safety and use of the FireArms Training Simulator. This session also included tours of the WestCom Dispatch Center and DCI crime lab.



# COMMUNITY OUTREACH

## Halloween

Each year the Police Department hosts an open house style Halloween. Children get dressed in their costumes and parade through the station collecting goodies from each officer. We had a record attendance with around 500 people stopping by this year.



## Thanksgiving Baskets

For Thanksgiving, we team up with the Waukee Community School district to identify some families in need. Officers purchase items, with the help of some generous community donations, and create a Thanksgiving meal basket for each family. This year we were able to make 22 baskets to help feed those for Thanksgiving.



# COMMUNITY OUTREACH

## Shop With a Cop

Each December, the Waukeee Police Department raises money and takes low-income children shopping for holiday gifts. The day starts off with the Fire Department cooking everyone breakfast before shopping begins. Every child is teamed up with an officer and gets to shop for themselves and their family members. Afterward we head back to the station and start wrapping the gifts while enjoying a pizza lunch. This year we took 30 kids shopping and also shopped for an additional 15 children.



# CONTACT INFORMATION

## Online

[www.waukee.org/police](http://www.waukee.org/police)

---

## Phone

DIAL 9-1-1 IN AN EMERGENCY

Non-Emergency Dispatch: 515-222-3321

Police Station: 515-978-7979

---

## Email

Email general inquires to [police@waukee.org](mailto:police@waukee.org).  
Inquiries are then directed to the appropriate  
division.

---

## Police Station

1300 SE LA Grant Parkway

Waukee, IA 50263

Open 7 AM-4PM Monday-Friday

## FOLLOW US ONLINE

