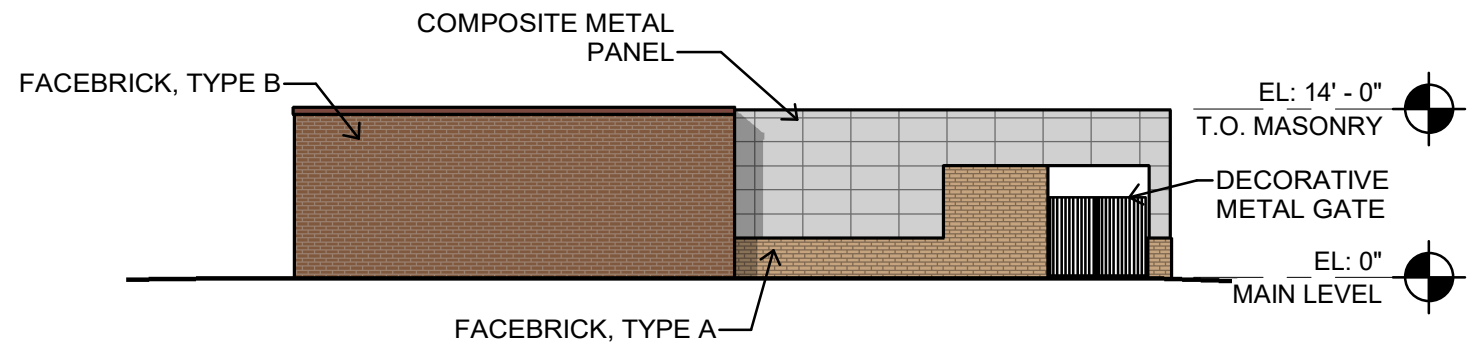
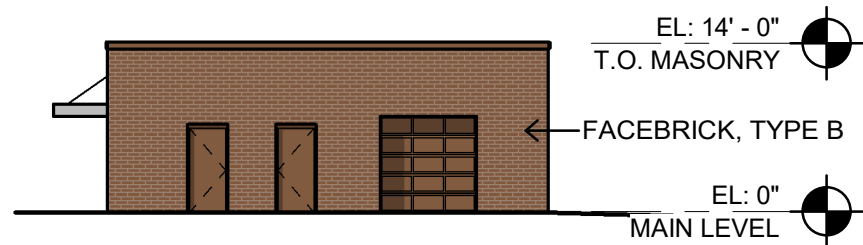


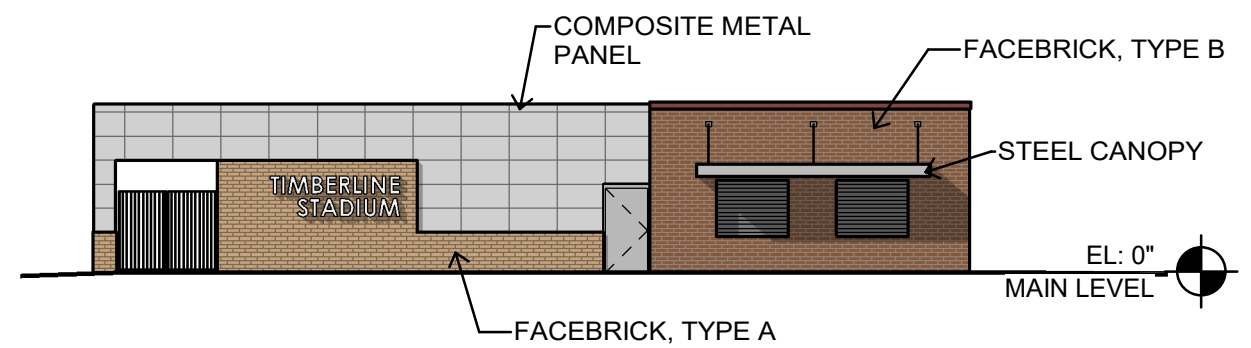
4 EAST ELEVATION
SCALE: 1/16" = 1'-0"



3 SOUTH ELEVATION
SCALE: 1/16" = 1'-0"



2 WEST ELEVATION
SCALE: 1/16" = 1'-0"



1 NORTH ELEVATION
SCALE: 1/16" = 1'-0"

Materials

Brick - 63.4%
ACM Metal Panel - 36.6%