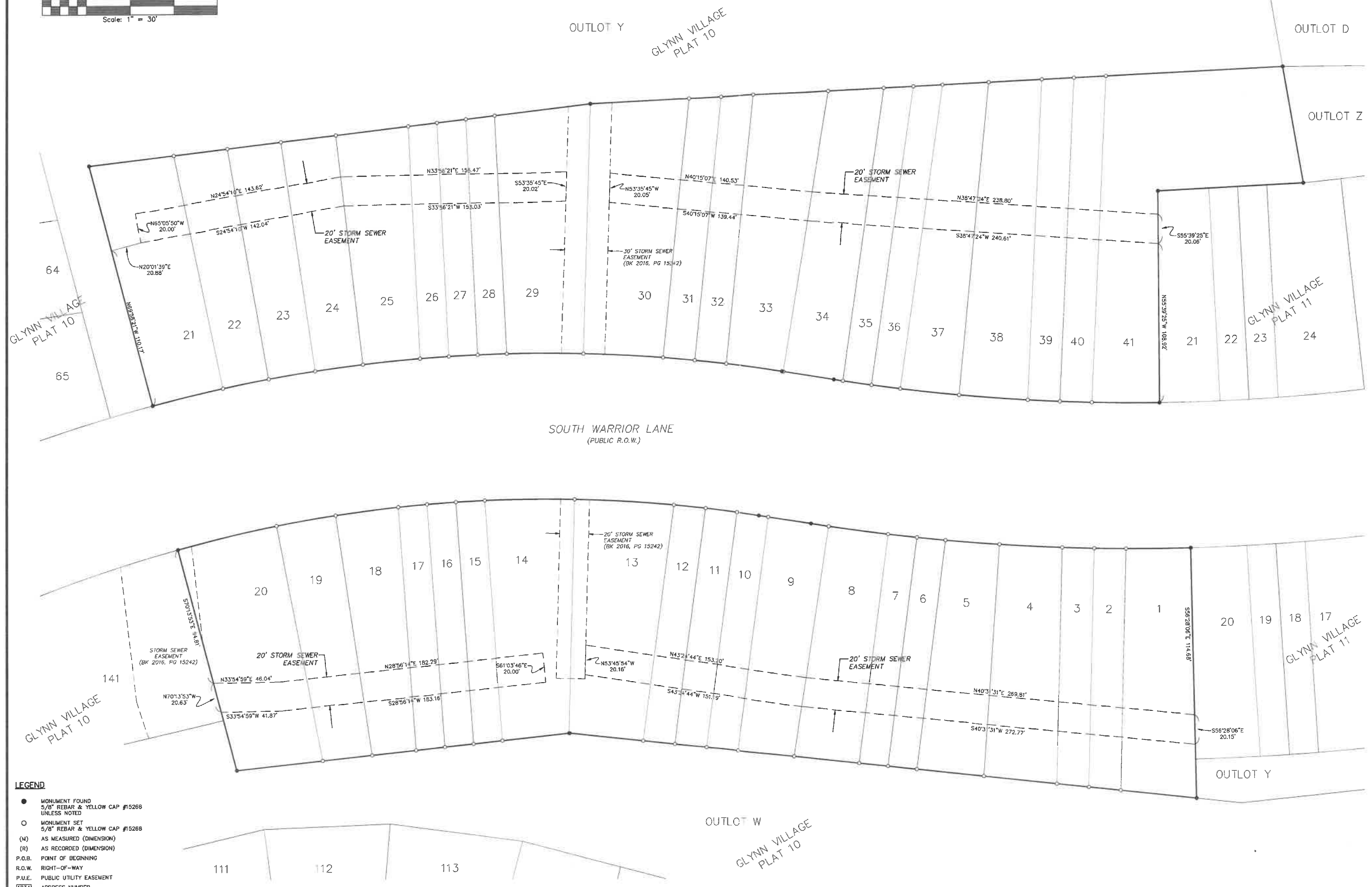
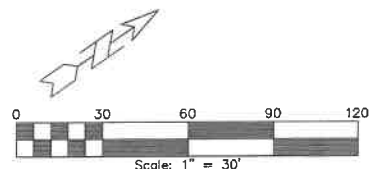


FINAL PLAT GLYNN VILLAGE PLAT 12

WAUKEE, DALLAS COUNTY, IOWA



- LEGEND**
- MONUMENT FOUND
5/8" REBAR & YELLOW CAP #15268
UNLESS NOTED
 - MONUMENT SET
5/8" REBAR & YELLOW CAP #15288
 - (M) AS MEASURED (DIMENSION)
 - (R) AS RECORDED (DIMENSION)
 - P.O.B. POINT OF BEGINNING
 - R.O.W. RIGHT-OF-WAY
 - P.U.E. PUBLIC UTILITY EASEMENT
 - 1234 ADDRESS NUMBER

GLYNN VILLAGE PLAT 12

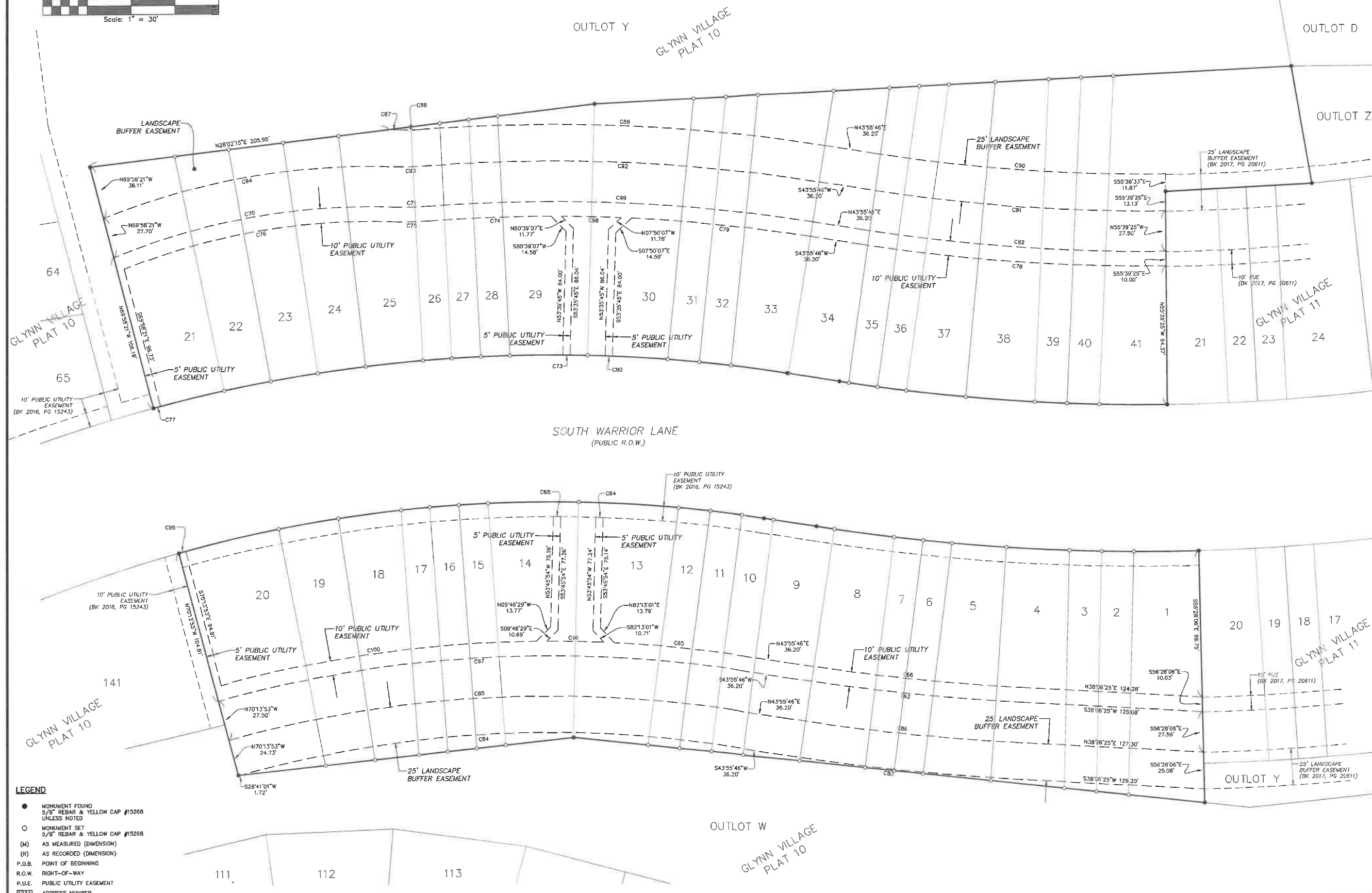
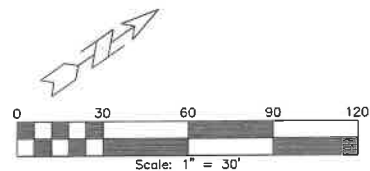
NO.	REVISION	DATE	BY	FOR	LOCATION:	SCALE: 1" = 50'	DESIGNED BY: DDC	DRAWN BY: DFR
						DWG: 21-066-FP-R1.DWG	CHECKED BY: DFR	DATE: 1/24/2022
						FIELD BOOK:	SHEET 5 OF 5	FILE NO.: 21-066

ERG
 Engineering Resource Group, Inc.
 Engineers and Surveyors
 2410 MONROE, SUITE 100
 DES MOINES, IOWA 50312
 (515) 268-4823

J:\2021 Proj\21-066\Design\Final\Plat21-066-FP_R1.dwg, 7/18/2022, 10:02:45 AM, DFR

FINAL PLAT GLYNN VILLAGE PLAT 12

WAUKEE, DALLAS COUNTY, IOWA



- LEGEND**
- MONUMENT FOUND
5/8" REBAR & YELLOW CAP #15268
UNLESS NOTED
 - MONUMENT SET
5/8" REBAR & YELLOW CAP #15268
 - (M) AS MEASURED (DIMENSION)
 - (R) AS RECORDED (DIMENSION)
 - P.O.B. POINT OF BEGINNING
 - R.O.W. RIGHT-OF-WAY
 - P.U.E. PUBLIC UTILITY EASEMENT
 - [1234] ADDRESS NUMBER

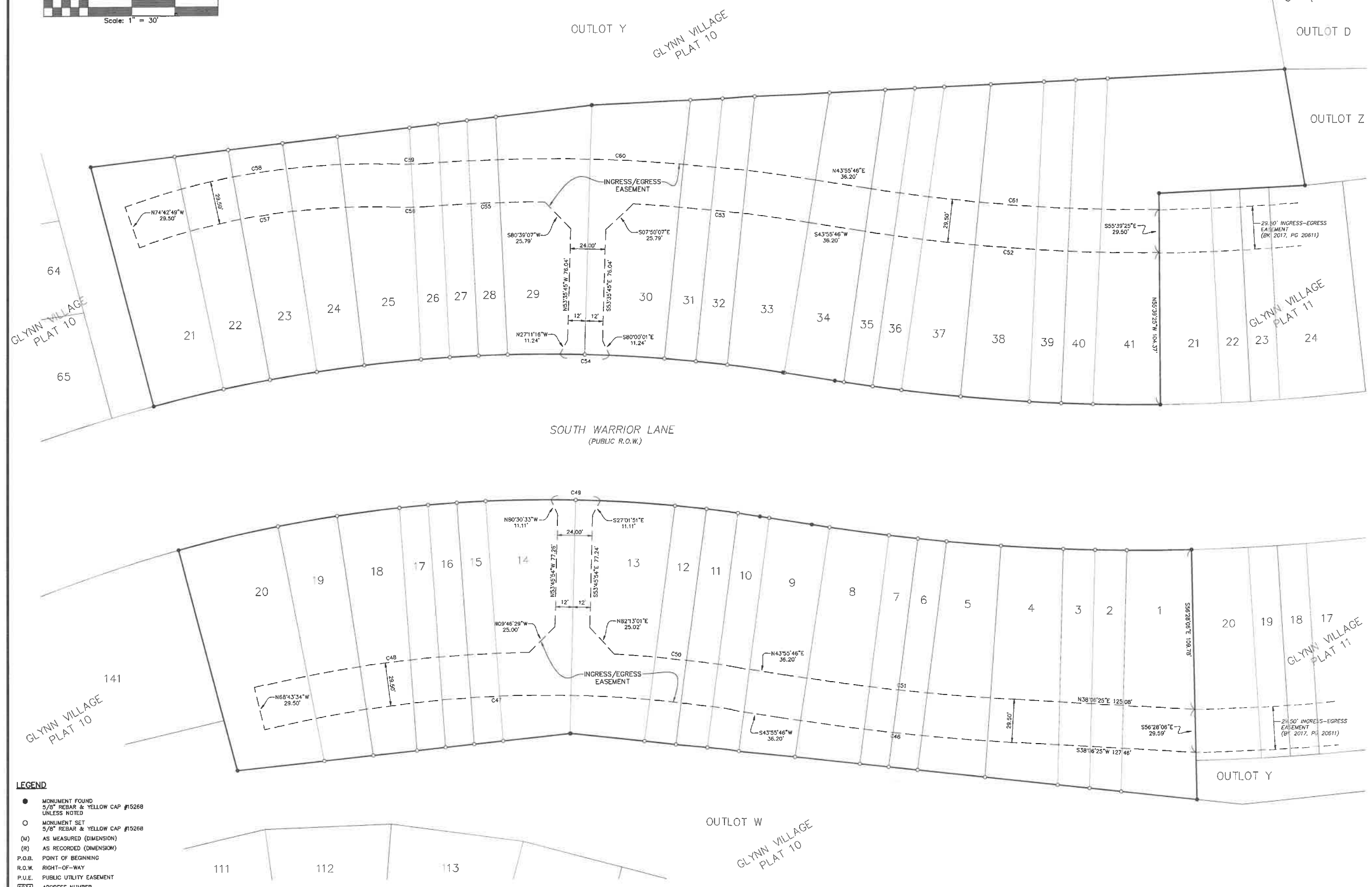
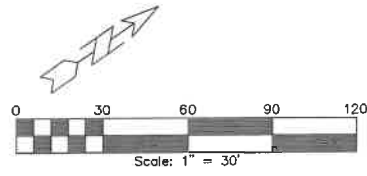
GLYNN VILLAGE PLAT 12

NO.	REVISION	DATE	BY	FOR	LOCATION	FIELD BOOK	SHEET	OF	FILE NO.
							4	5	21-066
		DESIGNED BY:	DDC	1" = 40'					
		CHECKED BY:	DFR	DWG: 21-066-FP-PL12.DWG					
		DRAWN BY:	DFR	DATE: 1/24/2022					

ERG
Engineering Resource Group, Inc.
Engineers and Surveyors
2413 GREENWOOD
DES MOINES, IOWA 50312
(515) 266-4823

J:\2021 Proj\21-066\Design\Final\Plat12-066-FP-PL12.dwg, 7/18/2022 10:02:40 AM, DFR

FINAL PLAT GLYNN VILLAGE PLAT 12 WAUKEE, DALLAS COUNTY, IOWA



- LEGEND**
- MONUMENT FOUND
5/8" REBAR & YELLOW CAP #15268
UNLESS NOTED
 - MONUMENT SET
5/8" REBAR & YELLOW CAP #15268
 - (M) AS MEASURED (DIMENSION)
 - (R) AS RECORDED (DIMENSION)
 - P.O.B. POINT OF BEGINNING
 - R.O.W. RIGHT-OF-WAY
 - P.U.E. PUBLIC UTILITY EASEMENT
 - 1234 ADDRESS NUMBER

GLYNN VILLAGE PLAT 12

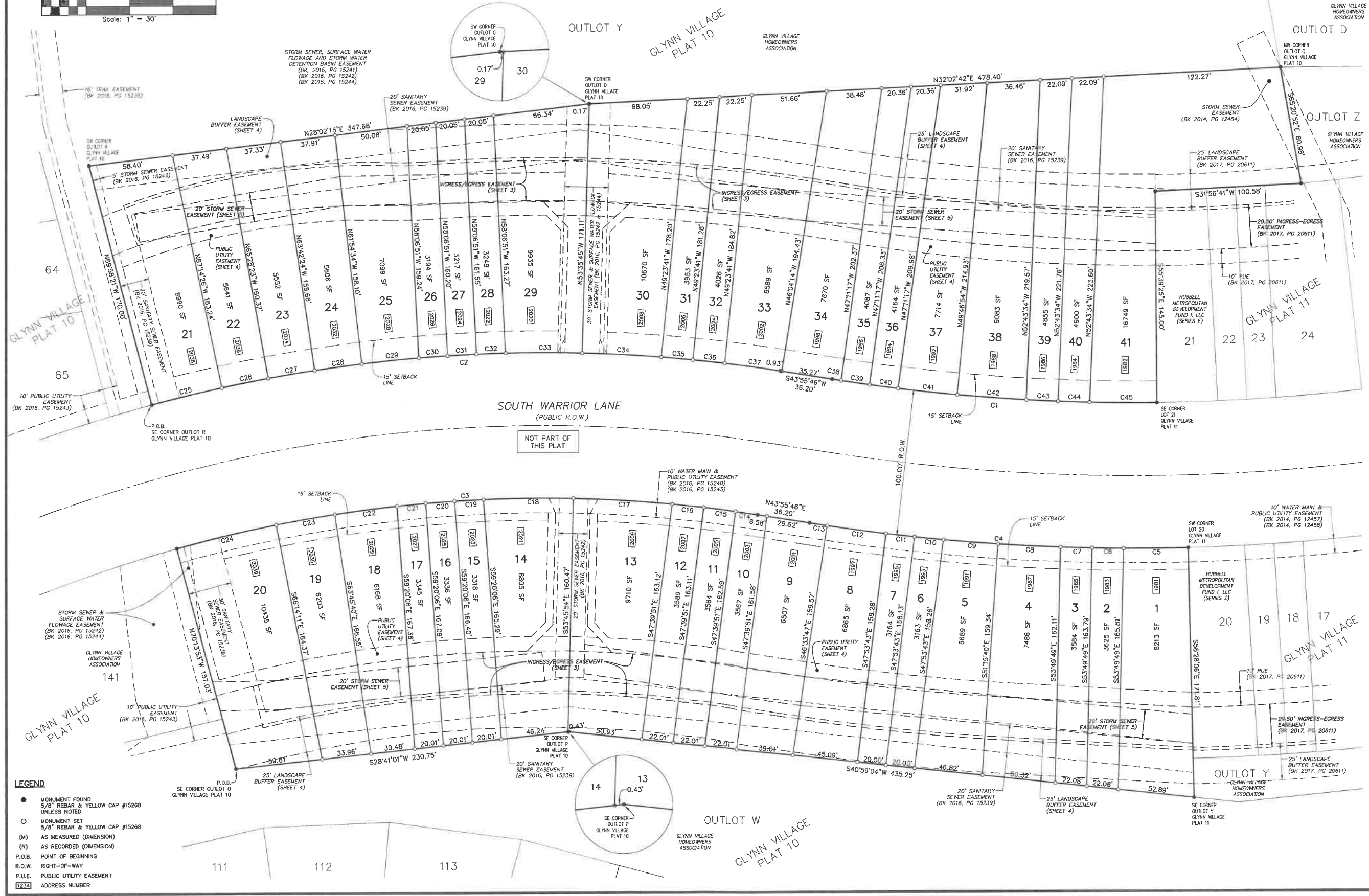
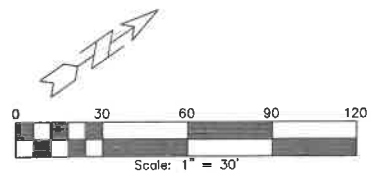
SCALE: 1" = 50'	DESIGNED BY: DDC	DRAWN BY: DFR
DWG: 21-066-FP-R1.DWG	CHECKED BY: SHEET 3 OF 5	DATE: 1/24/2022
FIELD BOOK:		FILE NO.: 21-066
LOCATION:		
DATE	BY	FOR
NO.	REVISION	

ERG
 Engineering Resource Group, Inc.
 Engineers and Surveyors
 4413 GRAND AVENUE
 DES MOINES, IOWA 50312
 (515) 288-4825

J:\2021 Proj\21-066\FinalPlat\21-066-FP_R1.dwg, 7/18/2022, 10:02:35 AM, DFR

FINAL PLAT GLYNN VILLAGE PLAT 12

WAUKEE, DALLAS COUNTY, IOWA



- LEGEND**
- MONUMENT FOUND
5/8" REBAR & YELLOW CAP #15268
UNLESS NOTED
 - MONUMENT SET
5/8" REBAR & YELLOW CAP #15268
 - (M) AS MEASURED (DIMENSION)
 - (R) AS RECORDED (DIMENSION)
 - P.O.B. POINT OF BEGINNING
 - R.O.W. RIGHT-OF-WAY
 - P.U.E. PUBLIC UTILITY EASEMENT
 - [1234] ADDRESS NUMBER

GLYNN VILLAGE PLAT 12

NO.	REVISION	DATE	BY	FOR	LOCATION:	SCALE:	DESIGNED BY:	DRAWN BY:
						1" = 50'	DDC	DFR
						DWG: 21-066-FP-PL12.DWG	CHECKED BY:	DATE:
						FIELD BOOK:	SHEET 2	1/24/2022
								FILE NO.:
								21-066

ERG
Engineering Resource Group, Inc.
Engineers and Surveyors
2410 W. AVERA DRIVE
DES MOINES, IOWA 50312
(515) 268-4823