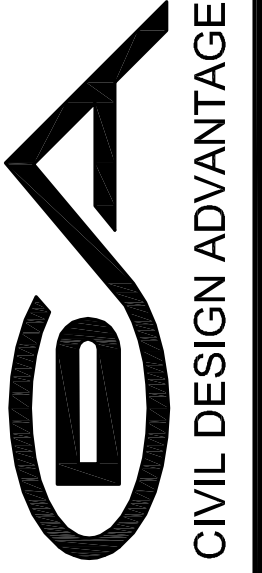


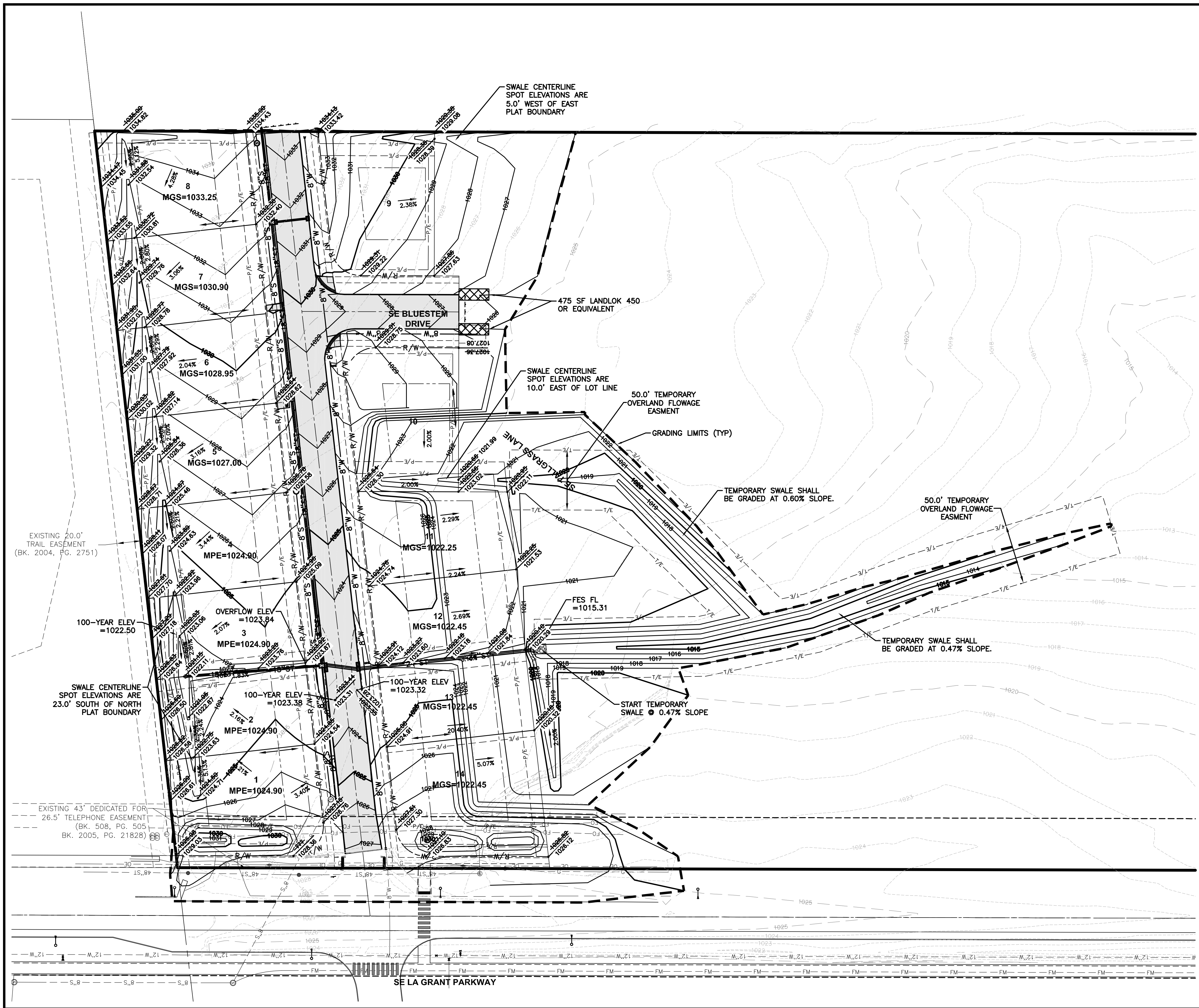
| |
|--------------------|
| 07/23/14 |
| 09/12/13 |
| 08/07/13 |
| 04/30/13 |
| 04/09/13 |
| AS-BUILT SUBMITTAL |
| FINAL SUBMITTAL |
| THIRD SUBMITTAL |
| FIRST SUBMITTAL |

3405 SE CROSSROADS DRIVE, SUITE G
 GRIMES, IOWA 50111
 PH: (515) 369-4400 Fax: (515) 369-4410
 ENGINEER: EKO
 EI: JJN



WAUKEE, IOWA

BLUESTEM PLAT 1 GRADING PLAN



- NOTES**
1. REFER TO SHEET 6 OF THE CONSTRUCTION DRAWINGS FOR EROSION AND SEDIMENT CONTROLS. REFER TO SEPARATE STORM WATER POLLUTION PREVENTION PLAN (SWPPP) FOR SPECIFIC DETAILS.
 2. PROTECT ALL TREES OUTSIDE GRADING LIMITS AND NOTIFY OWNER OF LARGE TREES WITHIN GRADING LIMITS. REVIEW ALL TREE CLEARING WITH DEVELOPER ON SITE PRIOR TO CONSTRUCTION.
 3. MINIMUM OPENING ELEVATIONS WILL BE PROVIDED AS PART OF THE AS-BUILT DRAWINGS.
 4. A CERTIFIED GRADING PLAN SHALL BE SUBMITTED TO THE CITY OF WAUKEE PRIOR TO ACCEPTANCE OF THE SUBDIVISION IMPROVEMENTS.

