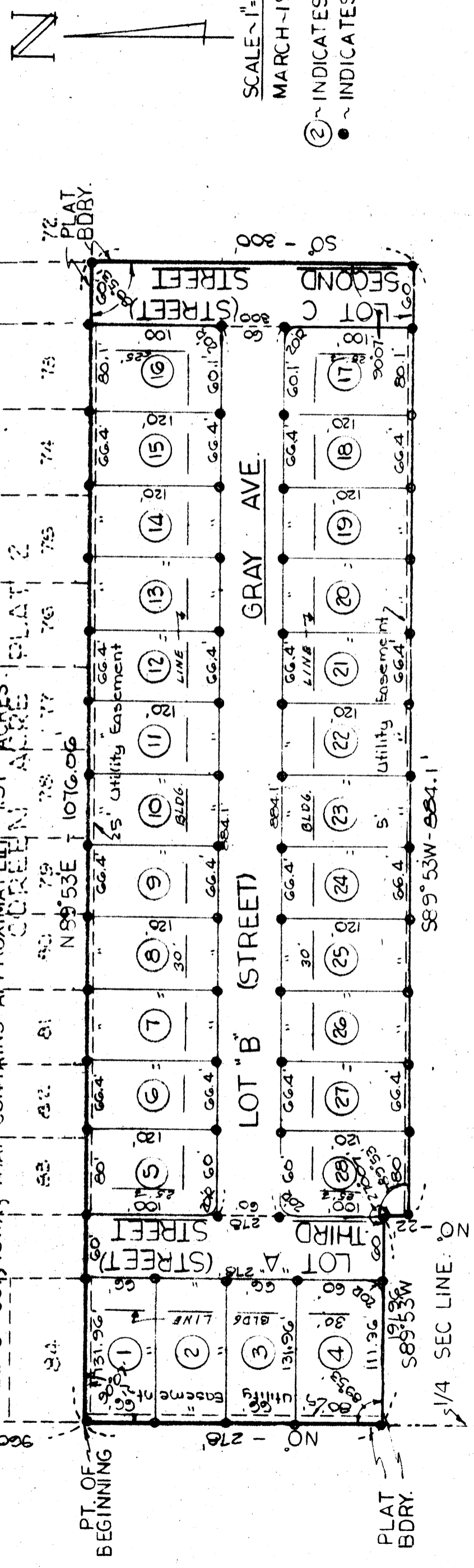


CTR. SEC. 33-79-26

CORENE ACRES - PLAT 3

LEGAL DESCRIPTION: BEGINNING AT A POINT 960 FT SOUTH OF THE CENTER SEC. 33-79-26, AND ON THE 1/4 SECTION LINE OF SAID SEC. 1, THENCE N89°53'E - 1076.06 FT., THENCE S0° - 300 FT., THENCE S89°53'W - 884.1 FT., THENCE N0° - 22 FT., THENCE S89°53'W - 191.96 FT., THENCE N0° - 278 FT. TO THE POINT OF BEGINNING. A PARCEL OF LAND IN THE TOWN OF WAUKEE, DALLAS CO., IOWA, THAT CONTAINS APPROXIMATELY 7.31 ACRES.



SCALE ~ 1" = 100'
 MARCH - 1968.
 (2) ~ INDICATES LOT NO.
 • ~ INDICATES PIPE SET.

I HEREBY CERTIFY THAT THIS PLAT WAS MADE BY ME OR UNDER MY DIRECT PERSONAL SUPERVISION AND THAT I AM A DULY REGISTERED LAND SURVEYOR UNDER THE LAWS OF THE STATE OF IOWA.

Henry S. Oakes
 HENRY S. OAKES, L.S. NO. 3321. DATE 4-10-68



CORENE ACRES - PLAT 3

SCALE: 1" = 100'	APPROVED BY:	DRAWN BY:
DATE: 3/68	<i>Wauke County Appr</i>	LW
OAKES ENGINEERING CO 949-65 1/2 ST., DES MOINES, IA.		
TELE. 255-1777		DRAWING NUMBER
<i>Henry S. Oakes</i>		894