

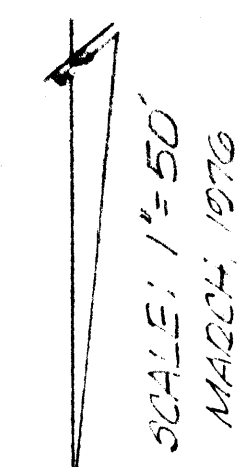
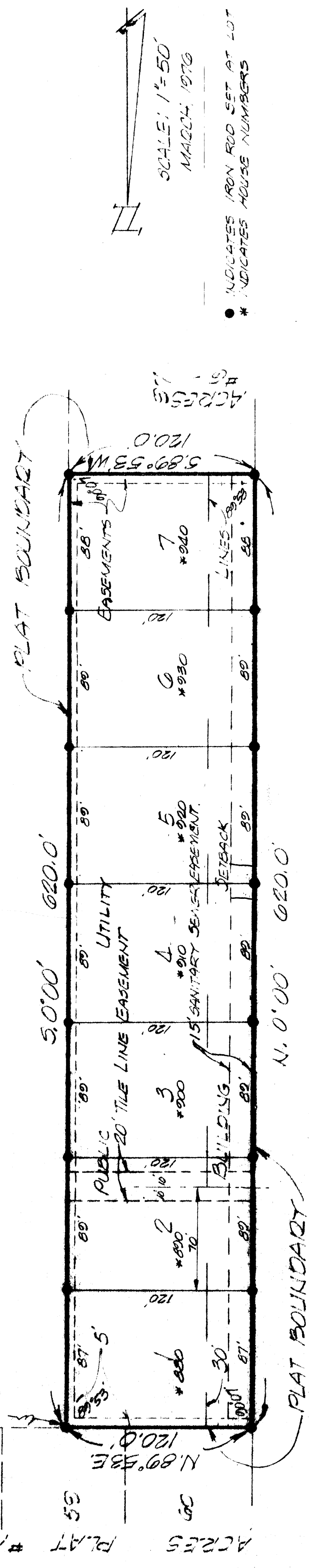
CORENE ACRES PLAT 7A

LEGAL DESCRIPTION.

BEGINNING AT A POINT 640 FEET, S.00°55'N. AND 635.6 FT. S.89°55'W. OF THE EAST 1/4 CORNER OF SECTION 33, T.79N., R.20W. SAID POINT ALSO BEING 120 FT. N.89°55'E. OF THE S.W. COR. OF LOT 60, CORENE ACRES PLAT #1, AN OFFICIAL PLAT; THENCE S.00° 620 FT. TO THE N.E. COR. OF LOT 87 CORENE ACRES PLAT #1 AN OFFICIAL PLAT; THENCE S.89°55'W. 120 FT. TO THE N.W. COR. LOT 87 CORENE ACRES PLAT #1 AN OFFICIAL PLAT; THENCE N.0°00' ALONG THE EAST LINE OF FIRST STREET, 620 FT. TO THE S.W. COR. LOT 80 CORENE ACRES PLAT #1 AN OFFICIAL PLAT; THENCE N.89°55'E. ALONG THE SOUTH LINE OF SAID CORENE ACRES PLAT #1, 120 FT. TO THE POINT OF BEGINNING. ALL OF SAID PARCEL BEING IN THE S.E. 1/4 OF SECTION 33, T.79N., R.20W., CITY OF WAUKESHA, DALLAS COUNTY, IOWA, AND CONTAINING APPROX. 1.708 ACRES.

E. 1/4 CORNER SECTION 33-79-20
 N. 5.000' E. 1/4

M. 59.60' S
 635.6' S.89°55'W



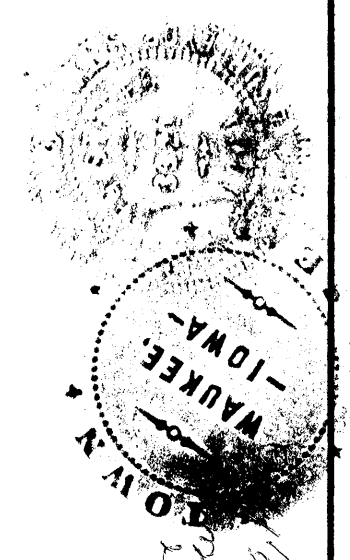
● INDICATES IRON ROD SET AT LOT CORNERS
 * INDICATES HOUSE NUMBERS

ACRES	LOT #	DESCRIPTION
61	61	CORENE PLAT
62	62	CORENE PLAT
63	63	CORENE PLAT
64	64	CORENE PLAT
65	65	CORENE PLAT
66	66	CORENE PLAT
67	67	CORENE PLAT

CERTIFICATION.

I HEREBY CERTIFY THAT THIS PLAT WAS PREPARED BY ME OR UNDER MY DIRECT PERSONAL SUPERVISION AND THAT I AM A DULY REGISTERED PROFESSIONAL ENGINEER AND LAND SURVEYOR UNDER THE LAWS OF THE STATE OF IOWA.

Henry S. Clarke
 HENRY S. CLARKE P.E. & L.S. 3821 3-11-76 DATE



Approved: *Archie J. Wacker* Mayor
 Approved: *Bernard D. Boone* Mayor

FINAL PLAT	
CORENE ACRES PLAT SEVEN(A)	
SCALE: 1" = 50'	APPROVED BY: <i>Henry S. Clarke</i>
DATE: NOV. 1975	DATE: <i>April 16, 1976</i>
DRAWN BY: <i>Henry S. Clarke</i>	
REVISED:	
DAMES ENGINEERING COMPANY	
DES MOINES, IOWA	
940 - 65TH STREET	DRAWING NUMBER
TELE: 255-1777	50312
	1746