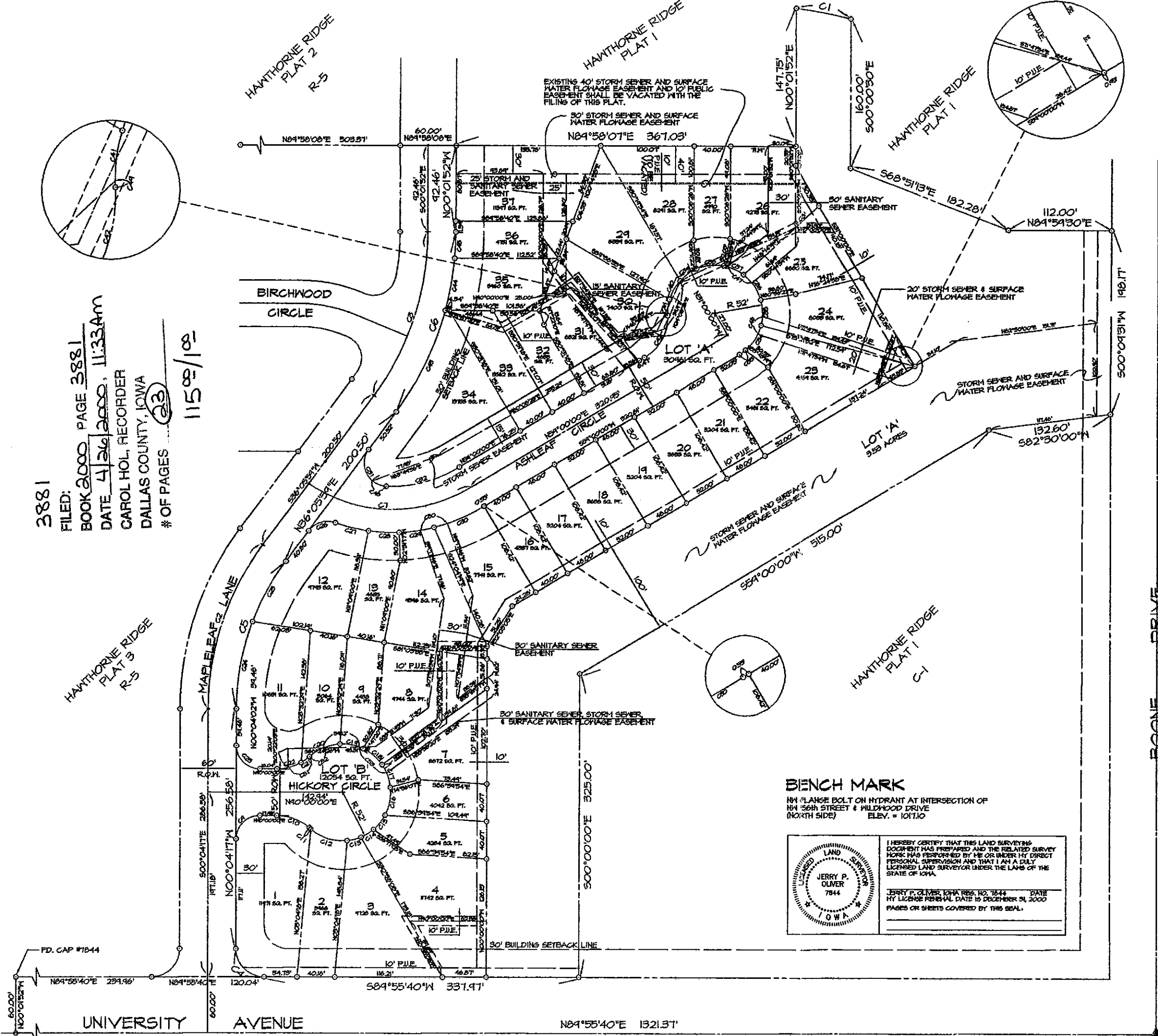


RECORDER'S NOTE: See Large Slide #139C for original signatures.

3881
FILED: BOOK 2000 PAGE 3881
DATE 4/26/2000, 11:33AM
CAROL HOL, RECORDER
DALLAS COUNTY, IOWA
OF PAGES 23

115.89/102



FINAL AT HAWTHORNE RIDGE TOWNHOMES

WAUKEE, IA

DEVELOPER
ACCURATE DEVELOPMENT
245 BETH ST., SUITE B
WEST DES MOINES, IA 50265
PH. 515-284-0440

LEGAL DESCRIPTION
LOT 14, HAWTHORNE RIDGE PLAT 3, AN OFFICIAL PLAT IN WAUKEE, DALLAS COUNTY, IOWA, AND CONTAINING 10.14 ACRES MORE OR LESS.

CURVE DATA

NUMBER	DELTA	RADIUS	LENGTH	TANGENT	CHORD	CH BEARING
C1	08°53'13"	340.00	60.44	30.31	60.43	S71°25'34"E
C2	36°10'15"	300.00	184.24	47.87	186.26	N83°00'47"E
C3	36°01'47"	300.00	184.17	47.85	186.06	N83°02'01"E
C4	40°00'00"	30.00	47.12	30.00	42.43	N45°04'20"W
C5	36°12'28"	264.74	170.46	88.18	167.64	N16°00'32"E
C6	36°01'57"	330.00	208.08	107.63	204.65	N63°01'22"E
C7	66°54'44"	158.76	186.64	105.07	175.24	S64°07'51"E
C8	40°04'02"	25.00	34.30	25.03	39.38	N44°57'54"E
C9	34°57'58"	55.86	37.57	14.54	36.81	S64°14'20"E
C10	02°14'44"	52.00	2.04	1.02	2.04	S48°04'04"E
C11	46°23'36"	52.00	42.11	22.28	40.46	S72°28'18"E
C12	17°19'52"	52.00	15.64	7.88	15.56	N75°42'58"E
C13	17°34'11"	52.00	16.02	8.07	15.46	N58°16'27"E
C14	21°41'40"	52.00	14.64	7.32	14.57	N38°36'01"E
C15	89°56'54"	52.00	30.81	15.87	30.36	N10°46'41"E
C16	26°50'40"	52.00	26.18	13.37	28.40	N20°37'02"W
C17	24°32'40"	52.00	26.81	13.71	26.52	N44°48'44"W
C18	28°48'10"	52.00	26.14	13.35	25.67	N78°59'14"W
C19	54°34'55"	52.00	35.82	18.71	35.21	S66°47'14"W
C20	11°48'03"	55.86	11.04	5.57	11.07	S55°04'23"W
C21	26°04'55"	55.86	26.48	13.51	26.21	S75°08'22"W
C22	40°02'34"	25.00	34.24	25.02	35.37	N48°05'21"W
C23	20°28'36"	264.58	46.14	40.61	45.68	N10°07'33"E
C24	18°48'56"	210.00	14.27	7.17	14.03	N28°13'07"E
C25	78°20'38"	25.00	52.00	18.62	24.86	N12°46'18"E
C26	11°32'11"	188.76	57.00	18.56	36.44	S76°14'24"E
C27	10°28'42"	188.76	33.45	16.77	35.40	S67°18'26"E
C28	11°44'48"	188.76	37.44	14.04	37.87	N81°53'44"E
C29	18°04'52"	188.76	58.26	24.37	58.01	N66°33'56"E
C30	123°22'46"	25.00	53.83	46.41	44.02	S28°28'24"E
C31	35°24'50"	153.76	82.87	42.81	81.55	N74°58'16"E
C32	04°00'40"	52.00	8.18	4.10	8.17	N84°24'40"E
C33	58°35'53"	52.00	52.30	16.84	31.74	N32°11'54"E
C34	30°52'02"	52.00	28.01	14.36	27.68	N10°02'18"W
C35	36°54'25"	52.00	38.57	17.84	32.44	N84°57'56"W
C36	26°08'20"	52.00	28.72	12.07	25.52	N66°31'44"W
C37	58°12'14"	52.00	30.15	15.50	24.72	S88°41'54"W
C38	25°20'44"	52.00	23.00	11.64	22.82	S54°31'21"W
C39	25°26'46"	52.00	23.04	11.74	22.90	S24°07'43"W
C40	14°19'54"	52.00	17.58	8.86	17.46	S06°44'20"W
C41	61°58'34"	50.00	54.04	30.00	51.45	S28°02'10"W
C42	21°12'12"	330.44	122.44	61.95	121.74	N28°26'45"E
C43	04°55'14"	330.00	57.14	28.64	57.07	N01°52'01"E
C44	04°56'17"	330.00	28.44	14.23	28.43	N02°26'16"E
C45	22°13'35"	52.00	30.17	10.21	20.05	N44°14'23"E
C46	35°18'34"	52.00	32.05	16.55	31.54	N57°14'50"W
C47	37°06'02"	25.00	16.14	8.34	15.41	N66°43'46"W
C48	02°10'32"	52.00	1.41	0.44	1.47	S01°50'23"E
C49	04°29'54"	188.76	30.15	15.11	30.11	S73°34'51"W
C50	21°21'56"	55.86	25.82	13.16	25.57	N62°54'20"E
C51	14°16'58"	52.00	17.50	8.83	17.42	N36°40'16"E
C52	45°34'02"	52.00	41.36	21.84	40.27	S46°42'52"E

BENCH MARK
N1/2" FLANGE BOLT ON HYDRANT AT INTERSECTION OF
N41 56th STREET & WILDWOOD DRIVE
(NORTH SIDE) ELEV. = 1071.10

I HEREBY CERTIFY THAT THIS LAND SURVEYING DOCUMENT HAS BEEN PREPARED AND THE RELATED SURVEY WORK HAS BEEN PERFORMED BY ME OR UNDER MY DIRECT PERSONAL SUPERVISION AND THAT I AM A DULY LICENSED LAND SURVEYOR UNDER THE LAWS OF THE STATE OF IOWA.

JERRY P. OLIVER, IOWA REG. NO. 7844 DATE MY LICENSE RENEWAL DATE IS DECEMBER 31, 2000 PAGES OR SHEETS COVERED BY THIS SEAL.

LEGEND

- PLAT BOUNDARY
- ▲ SECTION CORNER
- FOUND CORNER
- SET CORNER 1/2" IR. CAP #1844
- IR. IRON ROD
- GP. GAS PIPE
- D. DEEDED DISTANCE
- M. MEASURED DISTANCE
- P. PREVIOUSLY RECORDED DISTANCE
- P.U.E. PUBLIC UTILITY EASEMENT
- (1234) ADDRESS
- B.S.L. BUILDING SETBACK LINE

DATE: 6/1/99
REVISIONS: 4/10/99

CIVIL ENGINEERING CONSULTANTS, INC.
2400 86TH STREET, UNIT 12 DES MOINES, IOWA 50322-4379
PHONE: 515.276.4884 FAX: 515.276.7084

IOWA ONE-CALL
800/333-2888
CALL BEFORE YOU DIG

NORTH
SCALE: 1"=50'
0 25 50 100'

CFC

BOOK 2000-3881
PAGE 23