

FINAL PLAT HICKMAN WEST INDUSTRIAL PARK PLAT 4 SHEET 1 OF 1

OWNER/DEVELOPER

GYM SPACE, LLC
16636 DELLWOOD DR.
CLIVE, IA 50325
PHONE #: (515) 422-4731

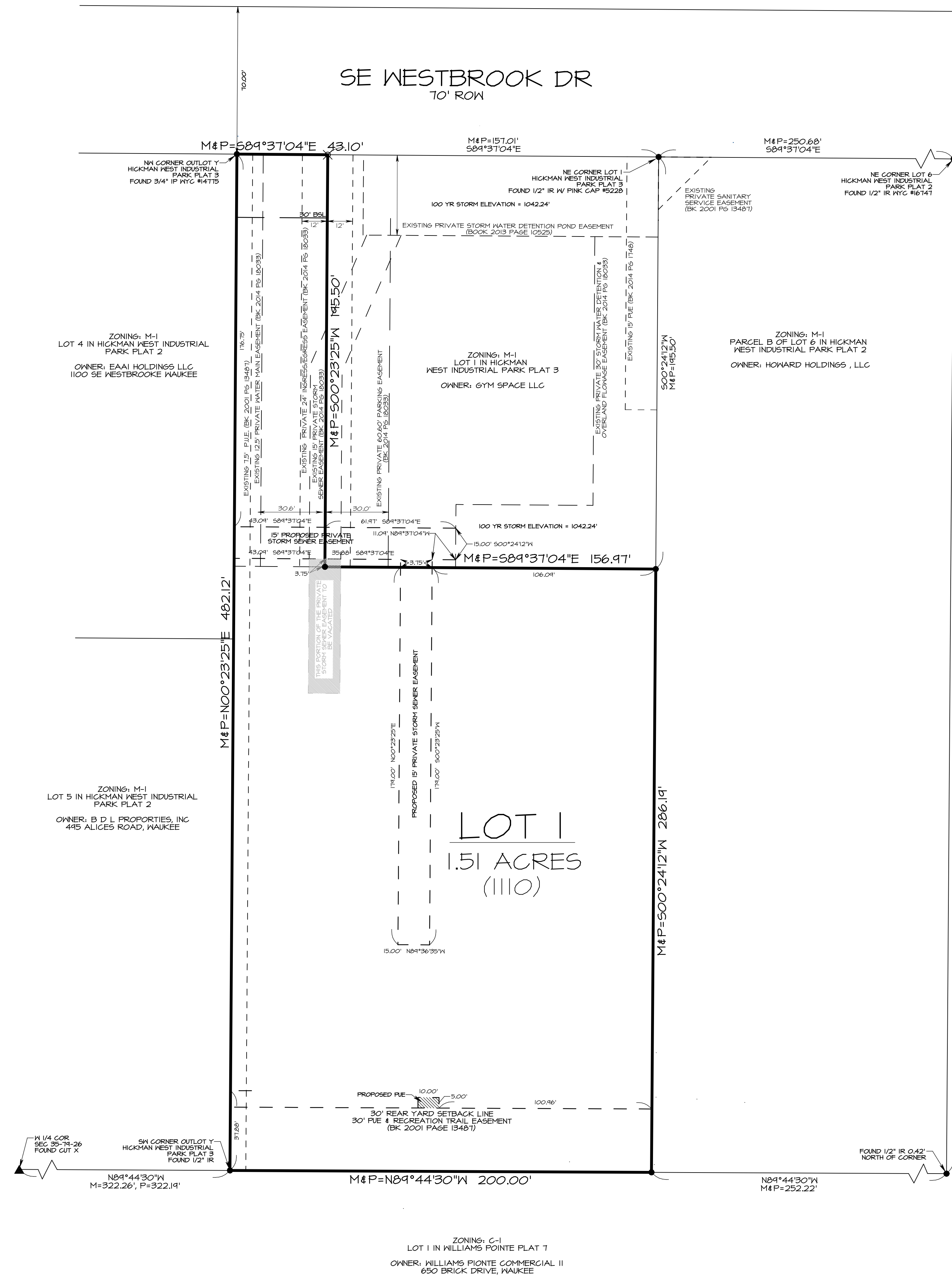
ZONING

M-1 (Light Industrial District)
SETBACKS:
FRONT: 30'
SIDES: NONE
REAR: 30'

LEGAL DESCRIPTION

OUTLOT Y IN HICKMAN WEST INDUSTRIAL PARK PLAT 3, AN OFFICIAL PLAT, NOW INCLUDED IN AND FORMING A PART OF THE CITY OF WAUKEE, DALLAS COUNTY, IOWA. SAID PARCEL CONTAINS 1.51 ACRES.

VICINITY SKETCH



CERTIFICATION

I HEREBY CERTIFY THAT THE LAND SURVEYING DOCUMENT WAS PREPARED BY ME, AND THE PLAT, BEARING THEREON, WAS PREPARED IN STRICT ACCORDANCE WITH THE RULES OF THE BOARD OF SURVEYING AND MAPPING, IOWA. LICENSE NUMBER: 13286, DATE: DEC 31 2016. PAGES COVERED BY THIS SEAL: THIS PAGE ONLY.

SIGNED: GREGORY L. ROSS P.L.S. 13286 DATE: _____

LEGEND

- FOUND 1/2" IR W/ PINK CAP #5228 UNLESS NOTED
- SET 1/2" IR W/ ORANGE CAP #13286
- ▲ SECTION CORNER FOUND AS NOTED
- △ SECTION CORNER SET AS NOTED
- M= MEASURED DISTANCE OR BEARING
- P= RECORDED DISTANCE OF BEARING

**ASSOCIATED ENGINEERING
AEC COMPANY OF IOWA**
PO Box 13075 Des Moines, IA 50310
Phone: (515) 255-3156 Fax: (515) 255-3157