

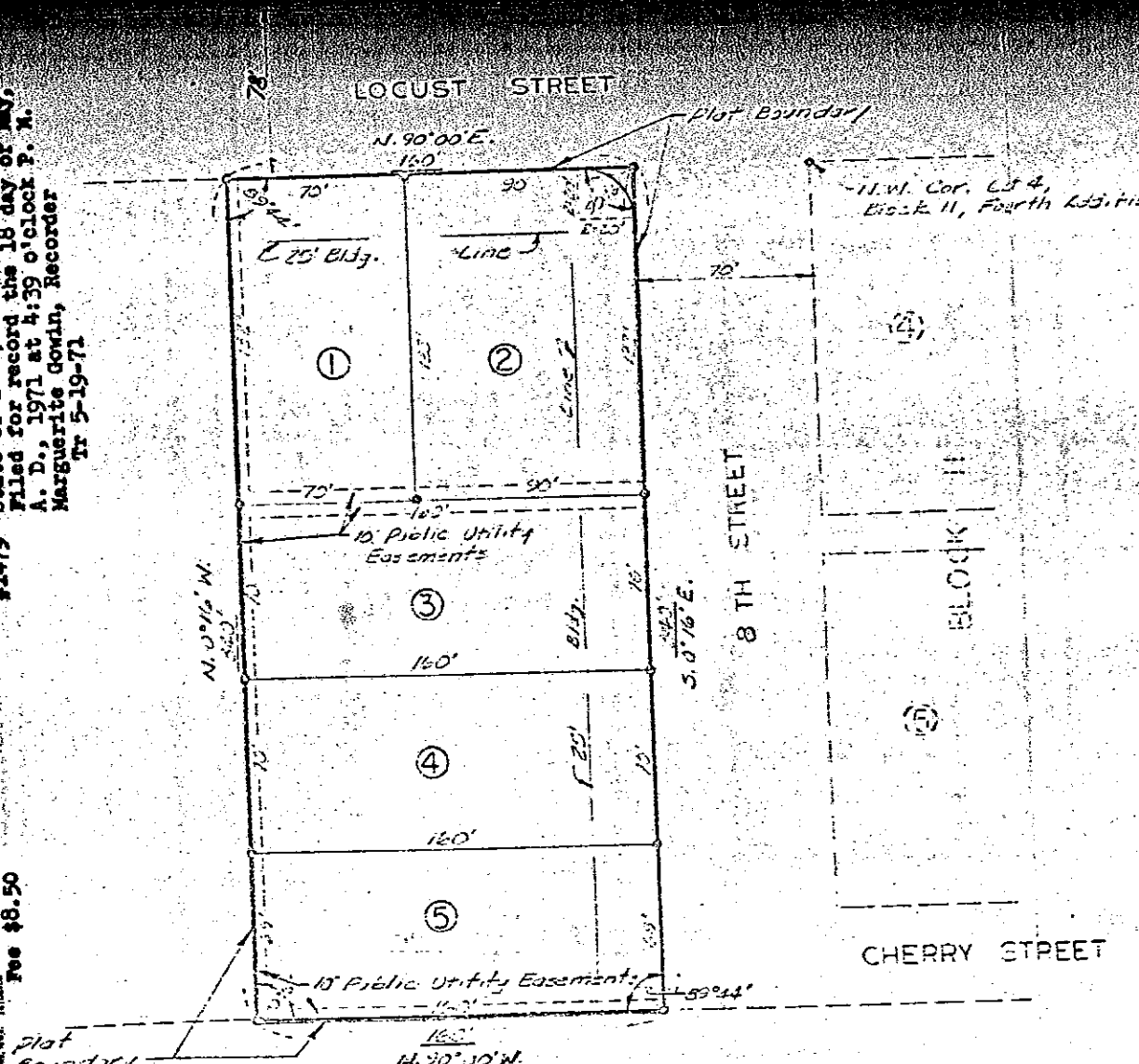
Plat Book, No. 3, Dallas County, Iowa

Fee \$8.50

\$1479

State of Iowa, Dallas County
 Filed for record the 18 day of May,
 A. D., 1971 at 4:39 o'clock P. M.
 Marguerite Govin, Recorder
 Tr 5-19-71

May 3, 1971
 To: Honorab
 Town of
 Waukee,
 Members
 Town of
 Waukee,
 Gentlemen:
 We, the
 described
 Beginn
 the To
 thence
 West o
 along
 All of
 Range
 1.248
 And do he
 be know
 Subscribe
 of May, 1
 SEAL
 We,
 that at
 Resoluti
 of Wauke
 members
 santed,
 upon th
 being c
 the
 TOWN SE
 RE, SH
 Beginn
 from o
 160.0
 line,
 line,
 All o
 Range
 Acres
 STATE
 1
 Daily
 real
 from
 Sub
 SEAL



WAUKEE, IOWA

LEGAL DESCRIPTION:

Beginning 70.0 ft. West of the N.W. Corner of Lot 4, Block 11, Fourth Addition to the town of Waukee, Iowa; thence South along the West line of 8th Street, 240.0 ft.; thence West 160.0 ft.; thence North parallel to the West line of 8th Street and 160 ft. West of said line, 240.0 ft. to a point on the South line of Locust Street; thence East along the South line of Locust Street, 160.0 ft. to the point of beginning.

All of the above described parcel being a part of the NW 1/4 of Section 33, T-75N, R-26W, in the Town of Waukee, Dallas County, Iowa and contains approximately 1.248 Acres.



SCALE: 1"=50'
 APRIL - 1971

NOTES:

- ② - Denotes Lot Number
- - Denotes Iron Pin at Lot Corner

I hereby certify that this Plat was prepared by me or under my direct personal supervision and that I am a duly Registered Land Surveyor under the laws of the State of Iowa.

Henry S. Oakes PE and LS
 Ia. Reg. No. 3321
 Date 4-27-71

SHERIDAN PLACE PLAT ONE WAUKEE IOWA		
SCALE: 1"=50'	APPROVED BY: <i>[Signature]</i>	DRAWN BY: ELC
DATE: 4/25/71		REVISED:
OAKES ENGINEERING COMPANY DES MOINES, IOWA		
319-65th Street, Tele: 255-1777 52212		DRAWING NUMBER 1248