

WALNUT RIDGE

LEGAL DESCRIPTION

BEING AN OFFICIAL PLAT OF A PARCEL OF LAND IN THE EAST 1/2 OF THE SOUTHWEST 1/4 OF SECTION 36, TOWNSHIP 79 NORTH, RANGE 26 WEST OF THE 5TH PRINCIPAL MERIDIAN MORE PARTICULARLY DESCRIBED AS FOLLOWS:
 COMMENCING AS A POINT OF REFERENCE AT THE SOUTHWEST CORNER OF THE EAST 1/2 OF THE SOUTHWEST 1/4 OF SAID SECTION 36; THENCE N.89°58'02"E. (ASSUMED FOR THIS DESCRIPTION ONLY) ALONG THE SOUTH LINE OF SAID S.W. 1/4 A DISTANCE OF 208.48 FEET TO A POINT; (SAID POINT BEING THE N.W. CORNER OF SECTION 2-78-26); THENCE N.89°36'51"W. A DISTANCE OF 200.00 FEET TO A POINT; THENCE N.89°36'51"E. ALONG THE SOUTH LINE OF SAID S.W. 1/4 A DISTANCE OF 361.82 FEET TO THE POINT OF BEGINNING. THENCE N.00°02'19"W. A DISTANCE OF 200.00 FEET TO A POINT; THENCE N.89°36'51"E. A DISTANCE OF 267.77 FEET TO A POINT; THENCE N.00°02'09"E. A DISTANCE OF 299.00 FEET TO A POINT; THENCE N.89°44'00"E. A DISTANCE OF 724.82 FEET TO A POINT; THENCE S.00°04'38"E. A DISTANCE OF 497.45 FEET TO THE S.1/4 CORNER OF SAID SECTION 36; THENCE S.89°36'51"W. ALONG THE SOUTH LINE OF SAID S.W. 1/4 A DISTANCE OF 752.29 FEET TO THE POINT OF BEGINNING.
 ALL NOW BEING IN AND FORMING A PART OF DALLAS COUNTY, IOWA, AND CONTAINING 8.42 ACRES MORE OR LESS.

SURVEYORS NOTE

A LAND CORNER SEARCH OF THE SOUTH LINE OF SECTION 36 HAS REVEALED THE PRESENCE OF DOUBLE CORNERS. THESE CORNERS HAVE BEEN LOCATED IN THE FIELD AND HAVE BEEN DULY RECOGNIZED IN THE PREPARATION OF THIS PLAT.

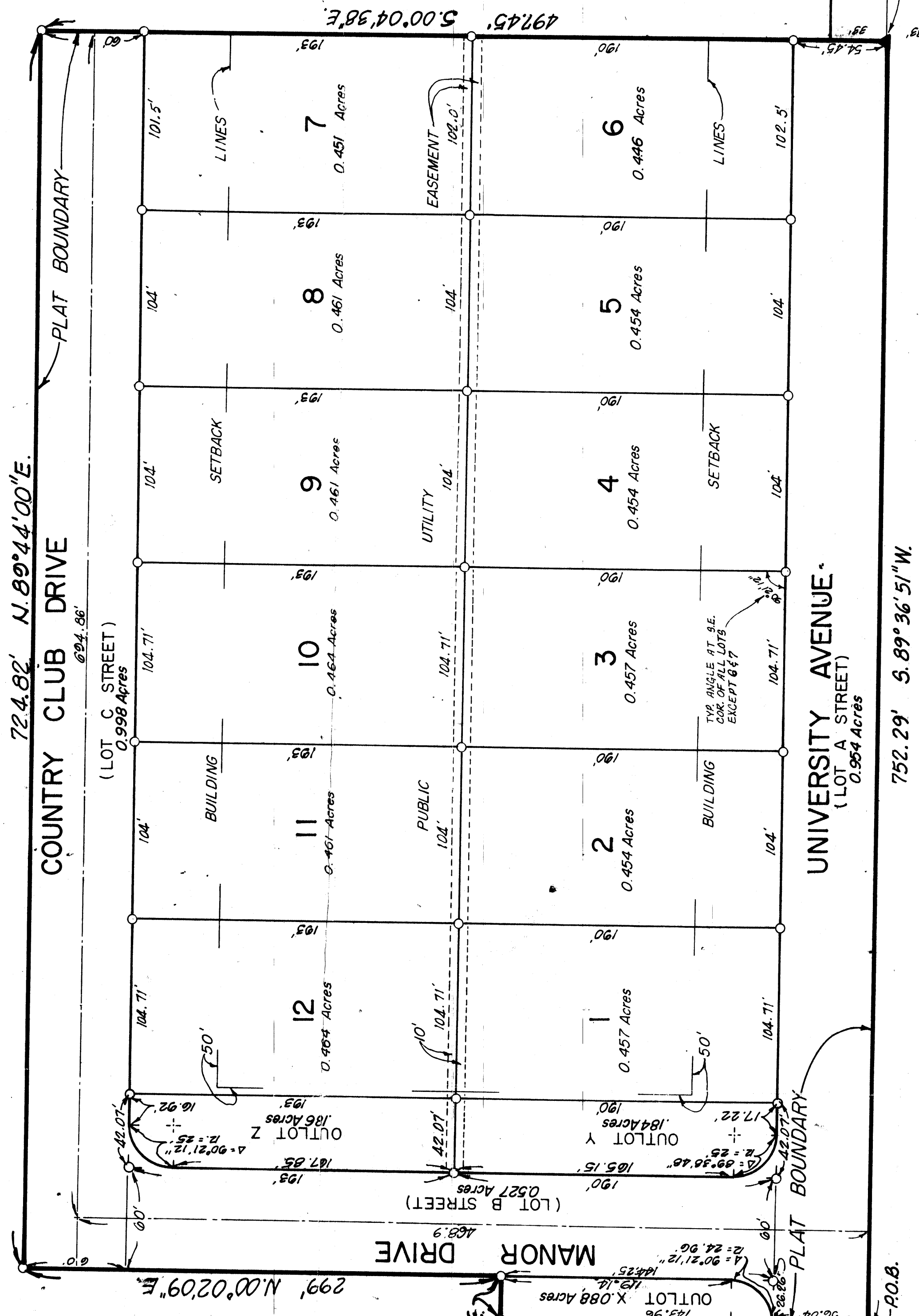
All requirements of the Ordinance shall be met before recording.
The zoning Commission approves the issuing of building permit on lot through 12, 8-18-72
Morris P. Fox zoning Administrator
Scale: 1" = 50'

○ INDICATES IRON ROD SET
 ▲ INDICATES MONUMENT FOUND

CERTIFICATION

I HEREBY CERTIFY THAT THIS PLAT, MAP, SURVEY OR REPORT WAS MADE BY ME OR UNDER MY DIRECT PERSONAL SUPERVISION AND THAT I AM A DULY REGISTERED LAND SURVEYOR UNDER THE LAWS OF THE STATE OF IOWA.
 BY: *David H. Cargill* DATE: *June 1972*
 DAVID H. CARGILL
 IOWA REG. NO. 5931

Private streets and are not to become part of secondary road system until compliance with subdivision requirements.
Gene L. Hardy
Dallas County Engineer



WALNUT RIDGE		DALLAS COUNTY, IOWA	
CIVIL ENGINEERING CONSULTANTS		LAND SURVEYORS	
815 HUBBELL BUILDING		DES MOINES, IOWA 50309	
REVISION: AUGUST 15, 1972	DESIGNED: <i>[Signature]</i>	CHECKED: <i>[Signature]</i>	DATE: <i>[Signature]</i>
PRELIMINARY CONSTRUCTION	DRAWN: <i>[Signature]</i>	APPROVED: <i>[Signature]</i>	DATE: <i>[Signature]</i>
FINAL RECORD		DATE: <i>[Signature]</i>	
SHEET		OF 1	