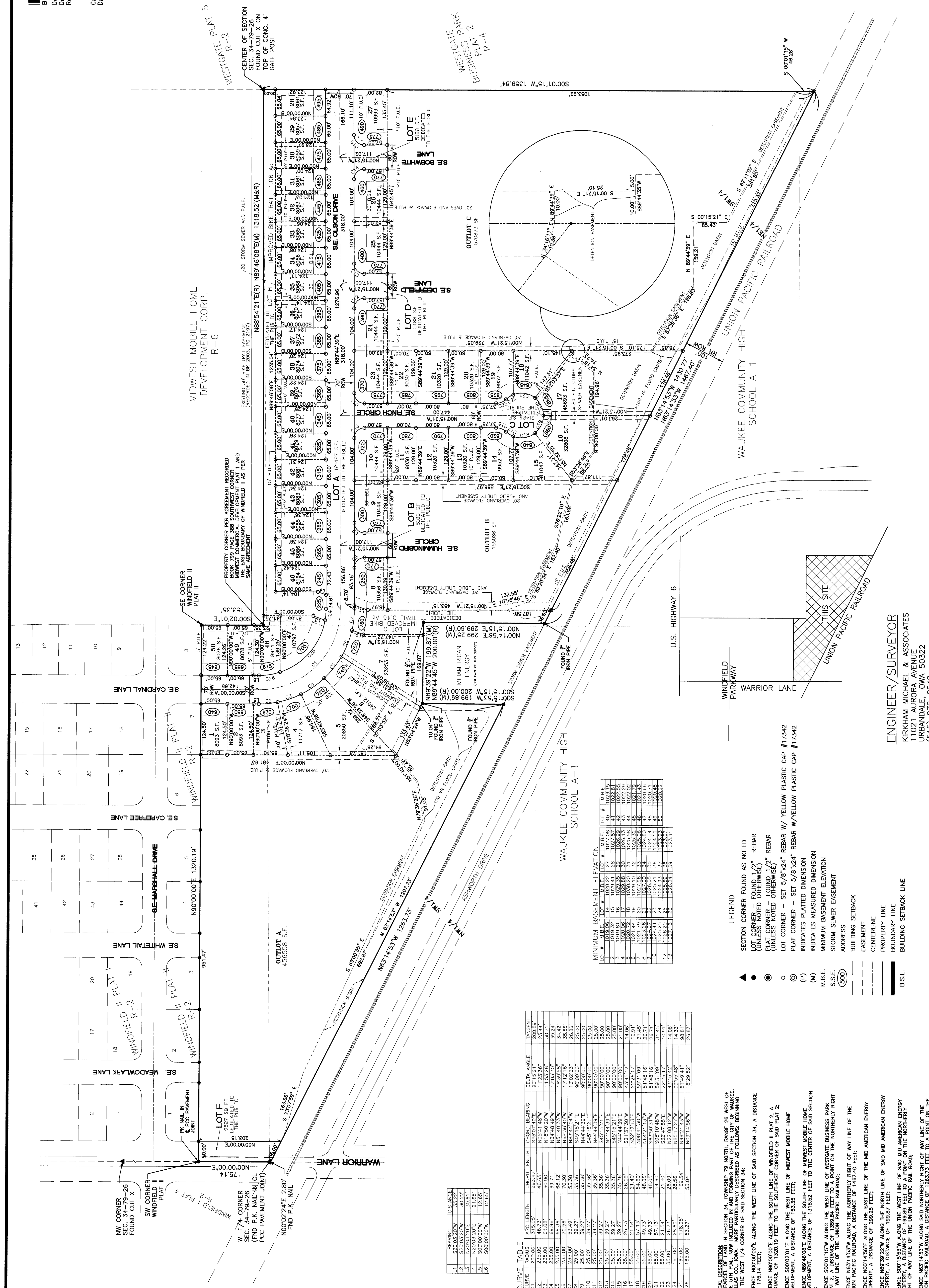
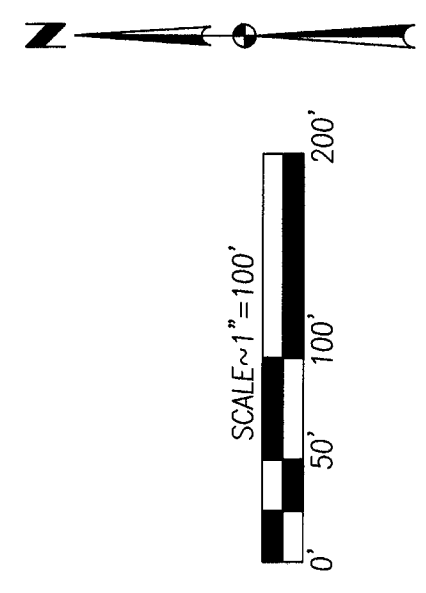


Book 2005 Page 16393
Document 16393, Type, SUBD1, Pages 21
Date 9/29/2005 Time 11:13 AM
Rec Amt \$107.00

Carol "Cindy" Hol, Recorder
Dallas County IOWA

APPROVED BY: *[Signature]*
DATE: 9/29/2005
FINAL PLAT



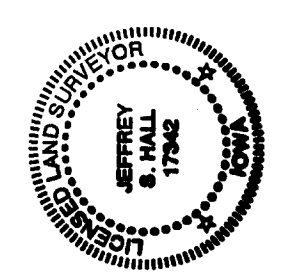
BEARING	DISTANCE
N 89°44'39" W	35.72
S 20°02'24" E	30.27
N 89°44'39" W	21.65
S 20°02'24" E	12.65

CURVE	RADIUS	ARC LENGTH	CHORD BEARING	DELTA ANGLE	CHORD	MINIMUM BASEMENT ELEVATION
C1	54527.40'E	483.47'	S 69°59'21" E	100.93°15'	202.89'	100.93
C2	233.00'	417.95'	S 69°59'21" E	100.93°15'	202.89'	100.93
C3	233.00'	61.08'	N 18°50'20" W	145.5°28'	50.71'	100.93
C4	233.00'	69.96'	S 69°59'21" E	100.93°15'	35.24'	100.93
C5	233.00'	69.96'	N 18°50'20" W	145.5°28'	50.71'	100.93
C6	233.00'	70.50'	S 69°59'21" E	100.93°15'	35.24'	100.93
C7	233.00'	53.49'	N 89°44'39" W	17.12°18'	35.55'	100.93
C8	233.00'	53.49'	S 20°02'24" E	100.93°15'	26.86'	100.93
C9	233.00'	39.27'	N 89°44'39" W	17.12°18'	25.00'	100.93
C10	233.00'	39.27'	S 20°02'24" E	100.93°15'	25.00'	100.93
C11	233.00'	39.27'	N 89°44'39" W	17.12°18'	25.00'	100.93
C12	233.00'	39.27'	S 20°02'24" E	100.93°15'	25.00'	100.93
C13	233.00'	39.27'	N 89°44'39" W	17.12°18'	25.00'	100.93
C14	233.00'	39.27'	S 20°02'24" E	100.93°15'	25.00'	100.93
C15	233.00'	39.27'	N 89°44'39" W	17.12°18'	25.00'	100.93
C16	233.00'	39.27'	S 20°02'24" E	100.93°15'	25.00'	100.93
C17	233.00'	39.27'	N 89°44'39" W	17.12°18'	25.00'	100.93
C18	233.00'	39.27'	S 20°02'24" E	100.93°15'	25.00'	100.93
C19	233.00'	39.27'	N 89°44'39" W	17.12°18'	25.00'	100.93
C20	233.00'	39.27'	S 20°02'24" E	100.93°15'	25.00'	100.93
C21	233.00'	39.27'	N 89°44'39" W	17.12°18'	25.00'	100.93
C22	233.00'	39.27'	S 20°02'24" E	100.93°15'	25.00'	100.93
C23	233.00'	39.27'	N 89°44'39" W	17.12°18'	25.00'	100.93
C24	233.00'	39.27'	S 20°02'24" E	100.93°15'	25.00'	100.93
C25	233.00'	39.27'	N 89°44'39" W	17.12°18'	25.00'	100.93
C26	233.00'	39.27'	S 20°02'24" E	100.93°15'	25.00'	100.93

- LEGEND**
- SECTION CORNER FOUND AS NOTED
 - LOT CORNER - FOUND 1/2" REBAR (UNLESS NOTED OTHERWISE)
 - PLAT CORNER - FOUND 1/2" REBAR (UNLESS NOTED OTHERWISE)
 - LOT CORNER - SET 5/8"x24" REBAR W/ YELLOW PLASTIC CAP #17342
 - PLAT CORNER - SET 5/8"x24" REBAR W/ YELLOW PLASTIC CAP #17342
 - (P) INDICATES PLATTED DIMENSION
 - (M) INDICATES MEASURED DIMENSION
 - M.B.E. MINIMUM BASEMENT ELEVATION
 - S.S.E. STORM SEWER EASEMENT
 - ADDRESS
 - BUILDING SETBACK
 - EASEMENT
 - CENTERLINE
 - PROPERTY LINE
 - BOUNDARY LINE
 - BUILDING SETBACK LINE
 - B.S.L.

LEGAL DESCRIPTION:
A PARCEL OF LAND IN SECTION 34, TOWNSHIP 79 NORTH, RANGE 26 WEST OF A PARCEL OF LAND INCLUDED IN AND FORMING PART OF THE CITY OF WAUKEE, DALLAS COUNTY, IOWA, AS DESCRIBED AS FOLLOWS, BEGINNING AT THE WEST 1/4 CORNER OF SAID SECTION 34;
THENCE NORTH 00°00'00" E ALONG THE WEST LINE OF SAID SECTION 34, A DISTANCE OF 175.14 FEET;
THENCE NORTH 00°00'00" E ALONG THE SOUTH LINE OF WINDFIELD II PLAT 2, A DISTANCE OF 1320.19 FEET TO THE SOUTHEAST CORNER OF SAID PLAT 2;
THENCE SOUTH 00°00'00" E ALONG THE WEST LINE OF MIDWEST MOBILE HOME DEVELOPMENT, A DISTANCE OF 153.35 FEET;
THENCE NORTH 89°44'39" E ALONG THE SOUTH LINE OF MIDWEST MOBILE HOME DEVELOPMENT, A DISTANCE OF 153.35 FEET TO THE CENTER OF SAID SECTION 34;
THENCE SOUTH 00°00'00" E ALONG THE WEST LINE OF WESTGATE BUSINESS PARK PLAT 2, A DISTANCE OF 1359.84 FEET TO A POINT ON THE NORTHERLY RIGHT OF WAY LINE OF THE UNION PACIFIC RAILROAD;
THENCE NORTH 89°44'39" E ALONG THE NORTHERLY RIGHT OF WAY LINE OF THE UNION PACIFIC RAILROAD, A DISTANCE OF 1467.40 FEET;
THENCE NORTH 00°00'00" E ALONG THE EAST LINE OF THE MID AMERICAN ENERGY PROPERTY, A DISTANCE OF 2585.00 FEET;
THENCE NORTH 00°00'00" E ALONG THE WEST LINE OF SAID MID AMERICAN ENERGY PROPERTY, A DISTANCE OF 199.89 FEET TO A POINT ON THE NORTHERLY RIGHT OF WAY LINE OF THE UNION PACIFIC RAILROAD;
THENCE NORTH 89°44'39" E ALONG SAID NORTHERLY RIGHT OF WAY LINE OF THE UNION PACIFIC RAILROAD, A DISTANCE OF 1263.73 FEET TO A POINT ON THE WEST LINE OF SAID SECTION 34;
THENCE NORTH 00°00'00" E ALONG THE WEST LINE OF SAID SECTION 34, A DISTANCE OF 2.80 FEET TO THE POINT OF BEGINNING, CONTAINING 1925674 SQUARE FEET, 43.56 ACRES SUBJECT TO EASEMENTS APPLICABLE OR OF RECORD.

I HEREBY CERTIFY THAT THIS LAND SURVEYING DOCUMENT AND THE RELATED SURVEY WORK WAS PERFORMED BY ME OR UNDER MY DIRECT PERSONAL SUPERVISION AND THAT I AM A FULLY LICENSED LAND SURVEYOR UNDER THE LAWS OF THE STATE OF IOWA.
JERRY S. HALL
DATE: 9/27/2005



ENGINEER/SURVEYOR
KIRKHAM MICHAEL & ASSOCIATES
11021 AURORA AVENUE
URBANDALE, IOWA 50322
(515) 270-0848

OWNER/DEVELOPER
MIDWEST DEVELOPMENT II, L.C.
6600 WESTOWN PARKWAY
WEST DES MOINES, IOWA 50266
(515) 273-9500

SIDEWALKS
SIDEWALKS ALONG PUBLIC STREETS NEED TO BE INSTALLED BY OWNERS OF LOTS ADJOINING PUBLIC STREETS (HOMEOWNERS)