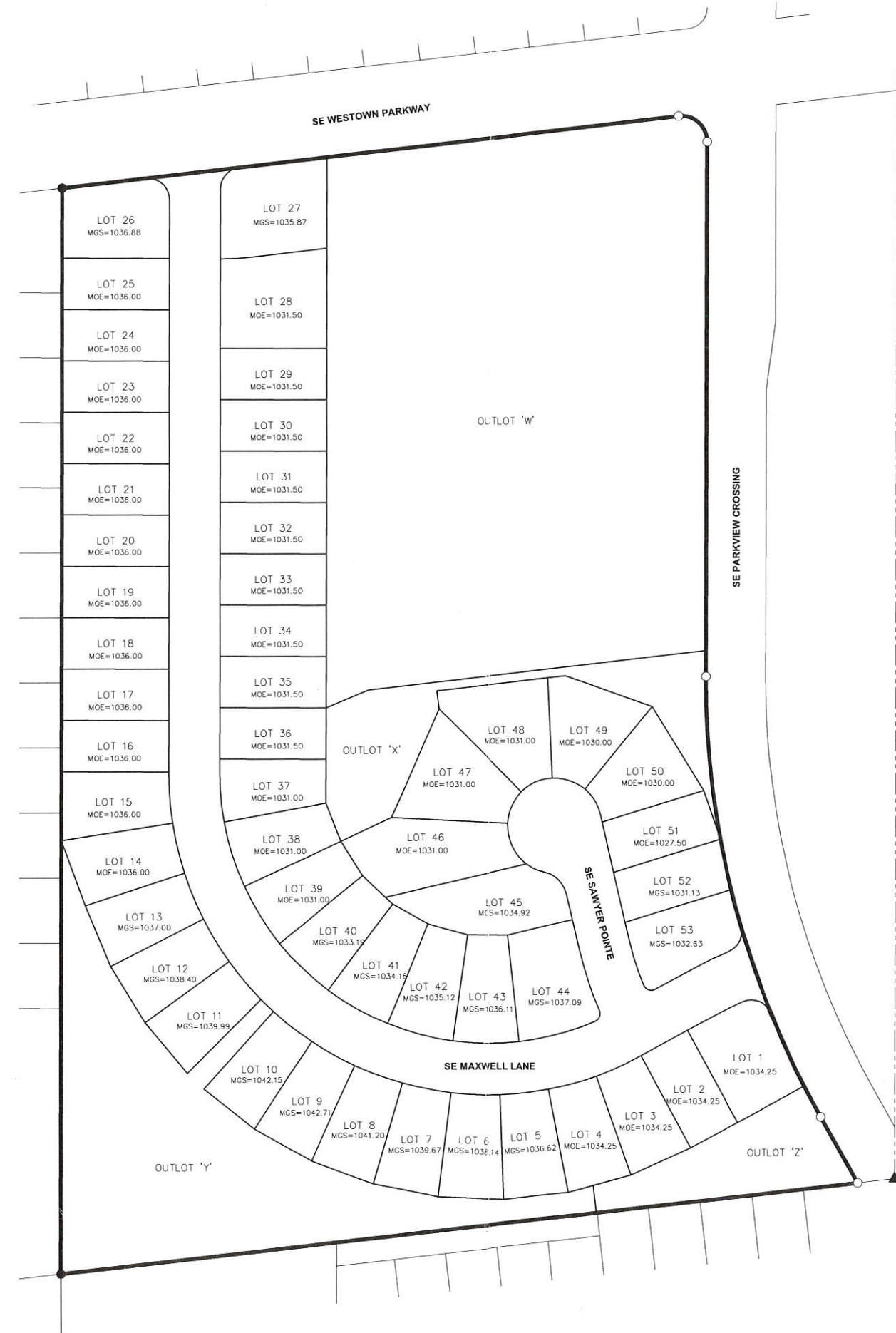


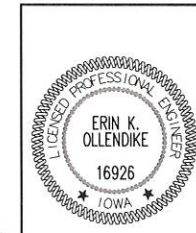
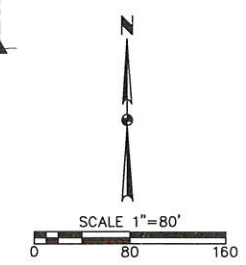
KETTLESTONE HEIGHTS PLAT 1

ENGINEER EXHIBIT

Doc ID: 007363710001 Type: CL-SURPI
 Recorded: 11/30/2017 at 08:59:24 AM
 Fee Amt: \$7.00 Page 1 of 1
 Dallas County Iowa
 Chad C. Airhart RECORDER
 File#
BK 2017 PG 23394



- NOTE:**
1. REFER TO APPROVED CONSTRUCTION DRAWINGS FOR COMPLETE DESIGN INFORMATION.
 2. REFER TO RECORDED FINAL PLAT FOR SURVEY INFORMATION.
 3. M.O.E. = MINIMUM OPENING ELEVATION
 4. M.G.S. = MINIMUM GRADE AT STRUCTURE



I HEREBY CERTIFY THAT THIS ENGINEERING DOCUMENT WAS PREPARED BY ME OR UNDER MY DIRECT PERSONAL SUPERVISION AND THAT I AM A DULY LICENSED PROFESSIONAL ENGINEER UNDER THE LAWS OF THE STATE OF IOWA.

Erin K. Ollendike 11-17-17
 ERIN K. OLLENDIKE, P.E. DATE

MY LICENSE RENEWAL DATE IS DECEMBER 31, 2017
 PAGES OR SHEETS COVERED BY THIS SEAL:
 THIS SHEET

DATE		REVISIONS		FIRST SUBMITTAL	11/17/17
<p>3405 S.E. CROSSROADS DRIVE, SUITE G GRIMES, IOWA 50111 PHONE: (515) 369-4400 FAX: (515) 369-4410</p>					
				TECH:	
				ENGINEER:	
<p>KETTLESTONE HEIGHTS PLAT 1 ENGINEER EXHIBIT</p>					
<p>WAUKEE, IOWA CIVIL DESIGN ADVANTAGE</p>					
<p>1 / 1 1507.353</p>					