

WAUKEE HARDWARE & RENT-IT CENTER

405 6TH ST. WAUKEE, IA 50263



Design Alliance Inc.
14225 University
Suite 110
Waukee, Iowa
50263
TEL 515.225.3469
FAX 515.225.9649
Copyright: 2018

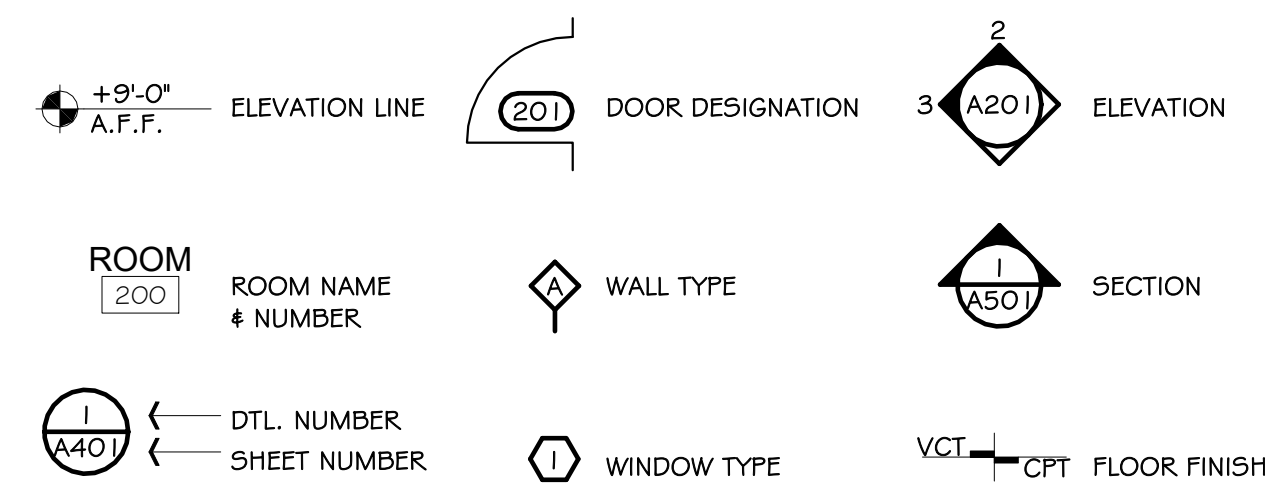
WAUKEE HARDWARE & RENT-IT CENTER

380 6TH ST., WAUKEE, IA 50263

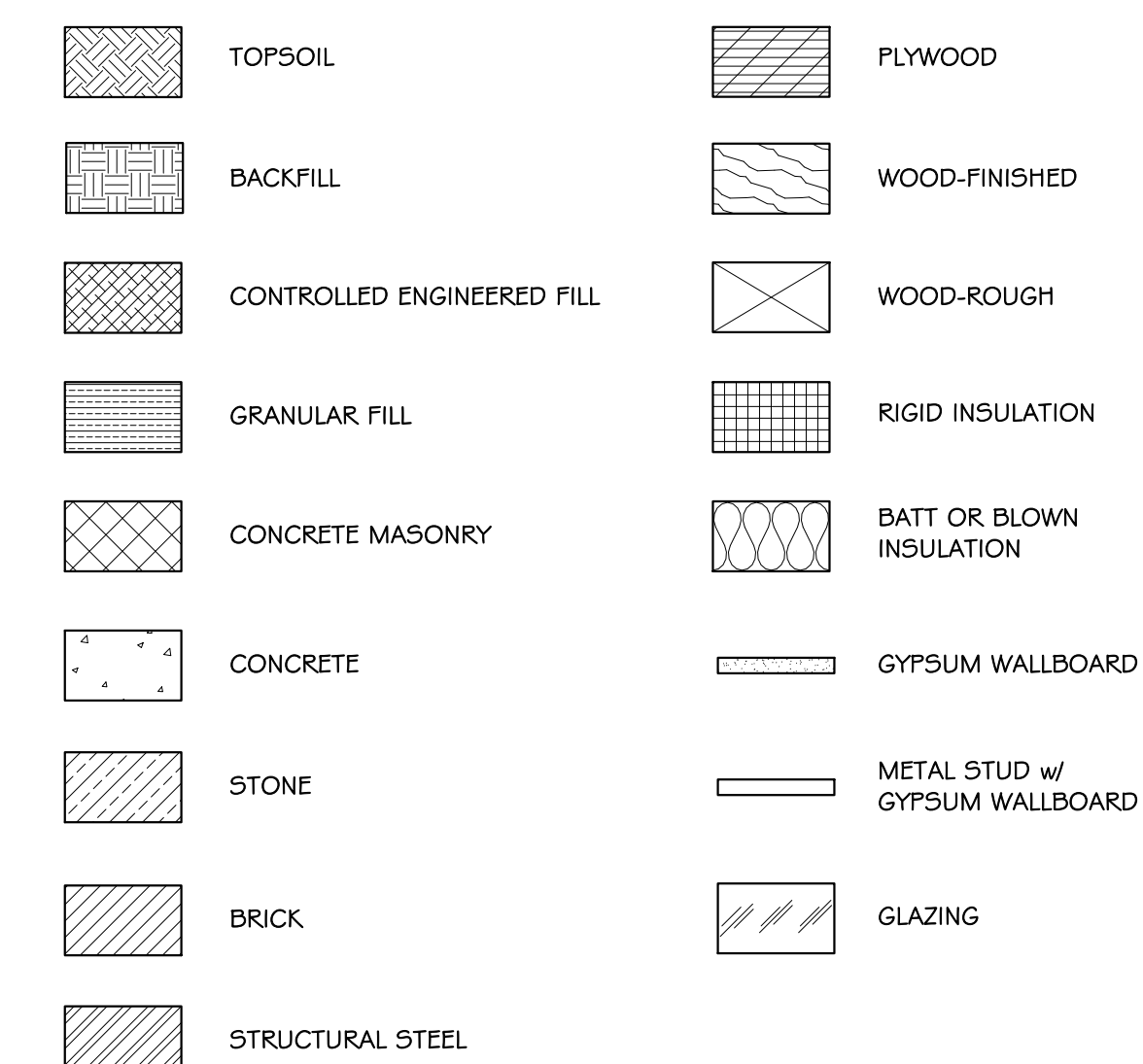
ABBREVIATIONS:

A.P.	ACCESS PANEL	MAS	MASONRY
A.B.	ANCHOR BOLT	MAX	MAXIMUM
AC	ACOUSTICAL	M.B.	MARKER BOARD
ACT	ACOUSTIC CEILING TILE	M.O.	MASONRY OPENING
ALUM	ALUMINUM	MET	METAL
ALT	ALTERNATIVE	MFR	MANUFACTURER
ADJ	ADJUSTABLE	MIN	MINIMUM
A.F.F.	ABOVE FINISH FLOOR	MISC	MISCELLANEOUS
APPROX	APPROXIMATELY	MAT	MATERIAL
ARCH	ARCHITECTURAL	MTL	METAL
BLK	BLOCK (ING)	N.I.C.	NOT IN CONTRACT
BM	BEAM	N.T.S.	NOT TO SCALE
BLDG	BUILDING	NO	NUMBER
B.M.	BENCHMARK	O.A.	OVERALL
B.O.	BOTTOM OF	O.C.	ON CENTER
BOT	BOTTOM	O.D.	OUTSIDE DIAMETER
BRG	BEARING	O.F.C.I.	OWNER FURNISHED & CONTRACTOR INSTALLED
CAB	CABINET	O.F.C.I.	OWNER FURNISHED & CONTRACTOR INSTALLED
C.B.	CHALKBOARD	O.F.O.I.	OWNER INSTALLED
C.F.C.I.	CONTRACTOR FURNISHED & CONTRACTOR INSTALLED	OPNG	OPENING
CONN	CONNECTION (TION)	OPH	OPPOSITE HAND
COORD	COORDINATE (TION)	P.J.	PANEL JOINT
CLG/CLNG	CEILING	PL	PLATE
COL	COLUMN	P.LAM.	PLASTIC LAMINATE
CONC	CONCRETE	PLAS	PLASTER
C.J.	CONTROL JOINT	FWD	PLYWOOD
C.L.	CENTER LINE	FTN	PARTITION
CONST	CONSTRUCTION	Q.T.	QUARRY TILE
CONT	CONTINUOUS	R.A.	RETURN AIR
CONTR	CONTRACTOR	R	RISER
C.G.	CORNER GUARD	RCP	REFLECTED CEILING PLAN
CPT	CARPET	REINF	REINFORCE
C.T.	CERAMIC TILE	REQ'D	REQUIRED
C.W.	CASEWORK	REV	REVERSE
DEMO	DEMOLITION	RM	ROOM
DTL	DETAIL	R.C.	ROOF CURB
DIM	DIMENSION	R.D.	ROOF DRAIN
DN	DOWN	RTU	ROOF TOP UNIT
D.S.	DOWNSPOUT	S.A.	SUPPLY AIR
DWG	DRAWING	SHT	SHEET
EA	EACH	SPEC	SPECIFICATION
E.J.	EXPANSION JOINT	SQ	SQUARE
E.I.F.S.	EXTERIOR INSULATED FINISHING SYSTEM	SECT	SECTION
EL / ELEV	ELEVATION	S.C.	SOLID CORE/SEALED CONC.
ELEC	ELECTRICAL	S.S.	STAINLESS STEEL
EQ	EQUAL	SSM	SOLID SURFACE MATERIAL (SIMULATED STONE)
E.T.R.	EXISTING TO REMAIN	S.T.	STEEL TUBE
E.W.C.	ELECTRIC WATER COOLER	STL	STEEL
EXST	EXISTING	SUSP	SUSPENDED
EXP	EXPANSION	STRUCT	STRUCTURAL
EXT	EXTERIOR	SIM	SIMILAR
F.V.	FIELD VERIFY	SNT	SEALANT
F.E.	FIRE EXTINGUISHER	T.B.	TACK BOARD
F.E.C.	FIRE EXTINGUISHER CABINET	T.C.	TOP OF CURB
F.D.	FLOOR DRAIN	TERR	TERRAZZO
F/F	FINISH TO FINISH	T&G	TONGUE AND GROOVE
FIN	FINISH	T.G.	TEMPERED GLASS
FL	FLOOR LINE	THRESH	THRESHOLD
FL / FLR	FLOOR	T.O.	TOP OF
FR	FRAME	T.O.C.	TOP OF CONCRETE
FTG	FOOTING	T.O.M.	TOP OF MASONRY
FDTN	FOUNDATION	T.P.	TELEPHONE POLE
GA	GAUGE	TR	TREAD
GALV	GALVANIZED	T.S.	TACKABLE WALL SYSTEM
GL	GLASS	T.W.	TOP OF WALL
G.B. / GYP BD	GYPSUM BOARD	TYP	TYPICAL
H.B.	HARDBOARD	TERM	TERMINATE
HT / HGT	HEIGHT	U.N.O. / U.O.N.	UNLESS NOTED OTHERWISE
HC / HANDI	HANDICAP	V.C.T.	VINYL COMPOSITE TILE
H.M.	HOLLOW METAL	VERT	VERTICAL
HORIZ	HORIZONTAL	VFY	VERIFY
HPC	HIGH PERFORMANCE COATING	W	WITH
H.W.	HARDWOOD	WO	WITHOUT
HSS	HOLLOW STEEL SHAPE	WD	WOOD
I.D.	INSIDE DIAMETER	W.G.	WIRE GLASS
INSUL	INSULATION	W.F.	WATER PROOFING
INT	INTERIOR	W.W.F.	WELDED WIRE FABRIC
JT	JOINT	W.W.M.	WELDED WIRE MESH
LAM	LAMINATED	W.F.I.S.	WOVEN FABRIC INSULATION SYSTEM
LT WT	LIGHT WEIGHT		

SYMBOL LEGEND:

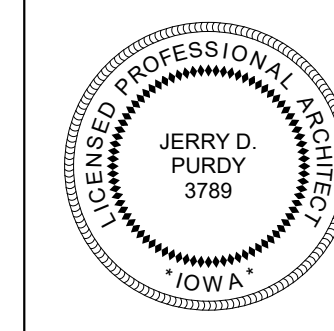


MATERIALS LEGEND:



ARCHITECT:

DESIGN ALLIANCE, INC. - ARCHITECT
14225 UNIVERSITY AVENUE, SUITE 110
WAUKEE, IA 50263-8294
PH: 515/225-3469
FAX: 515/225-9649



I hereby certify that the portion of this technical submission described below was prepared by me or under my direct personal supervision and responsible charge. I am a duly licensed professional architect under the laws of the state of Iowa.

Signature: _____ JERRY D. PURDY, AIA _____ Date _____

My license renewal date is June 30, 2019.

Pages or sheets covered by this seal: _____

GENERAL NOTES:

- IF DISCREPANCIES BETWEEN THE DRAWINGS AND SPECIFICATIONS EXIST, THE GREATER QUANTITY OR GREATER QUALITY SHALL PREVAIL IN ACCORDANCE WITH ARCHITECTS INTERPRETATION.
- PLAN DIMENSIONS ARE TAKEN TO FACE OF ROUGH MASONRY, TO FACE OF STUD PARTITIONS, AND TO THE FACE OF RISERS.
- DIMENSIONS OF MASONRY UNITS ARE NOMINAL AND SHOULD BE CHECKED AGAINST ACTUAL DIMENSIONS OF UNITS USED.
- CONTRACTOR SHALL FRAME AND PROVIDE OPENINGS IN CEILINGS AND WALLS FOR GRILLES, REGISTERS, DUCTS, LIGHT FIXTURES, ETC. SPECIAL GROUNDS AND SUPPORTS FOR SUCH ITEMS ARE THE RESPONSIBILITY OF THE CONTRACTOR FURNISHING THE ITEMS.
- SEE MECHANICAL PLANS FOR INFORMATION ON DUCTS, REGISTERS, GRILLES, PIPES, ETC.
- SEE ELECTRICAL PLANS FOR INFORMATION ON DISTRIBUTION PANELS, OUTLETS, LIGHT FIXTURES, AND OTHER ELECTRICAL ITEMS.
- USE LOCATIONS SHOWN ON REFLECTED CEILING PLAN FOR CEILING MOUNTED DEVICES AND FIXTURES.
- ALL WALL FINISHES THAT EXTEND TO THE SUSPENDED CEILINGS SHALL EXTEND A MINIMUM 4" ABOVE THE CEILING FOR FINISH PURPOSES.

LIST OF DRAWINGS:

GENERAL:

GO.0 COVER SHEET

ARCHITECTURAL:

- A1.1 EXISTING, DEMO, & NEW FLOOR PLANS
- A1.2 EXISTING, DEMO, & NEW EXTERIOR ELEVATIONS
- A1.3 SECTIONS
- A1.4 DETAILS
- A1.5 DETAILS

PROJECT LOCATION:



OWNER

TITLE
COVER SHEET

PROJECT NUMBER
218006

DATE
03/20/18

REVISIONS



G1.0

OWNER

TITLE
FLOOR PLANS

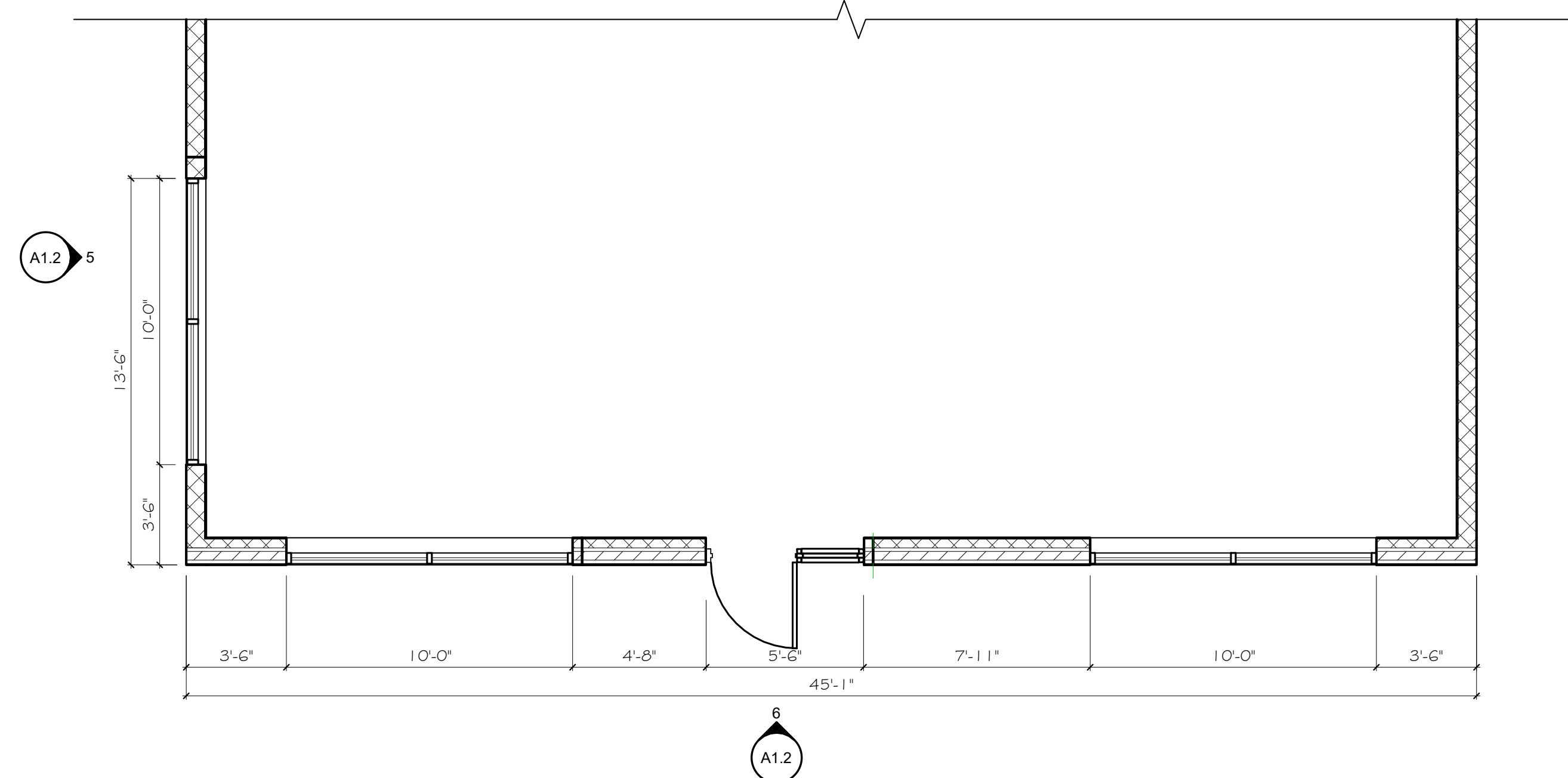
PROJECT NUMBER
218006

DATE
03/20/18

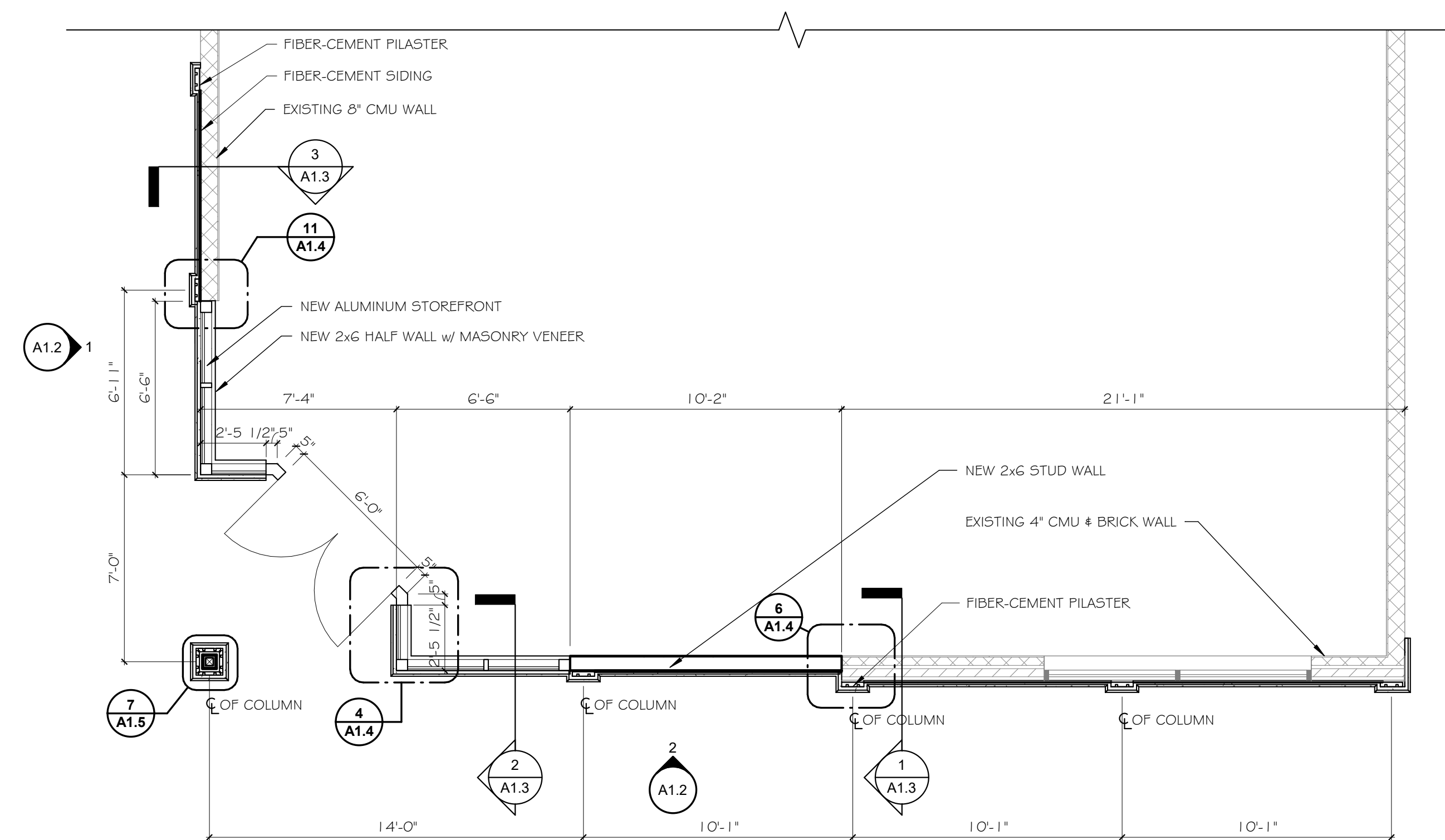
REVISIONS

△
△

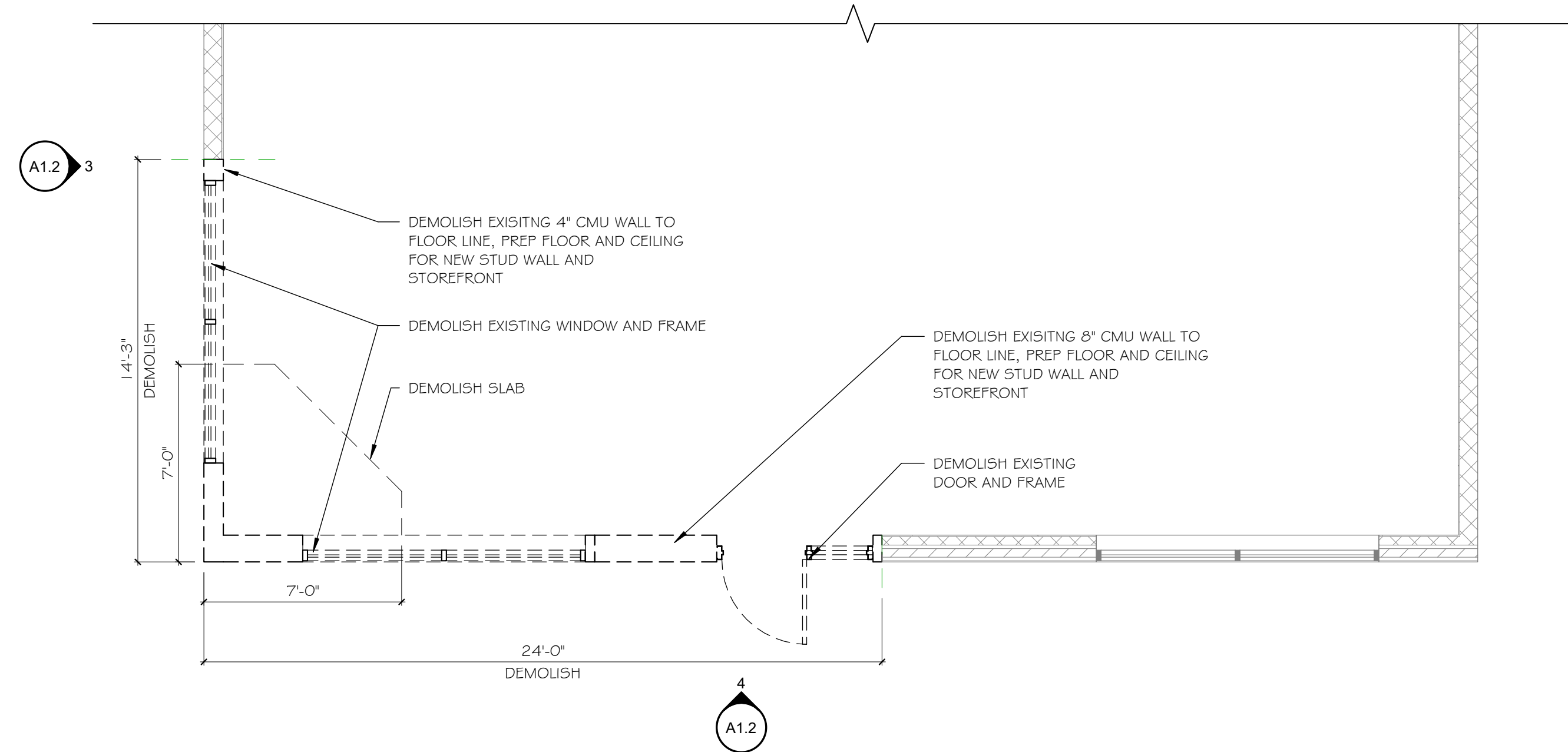
A1.1



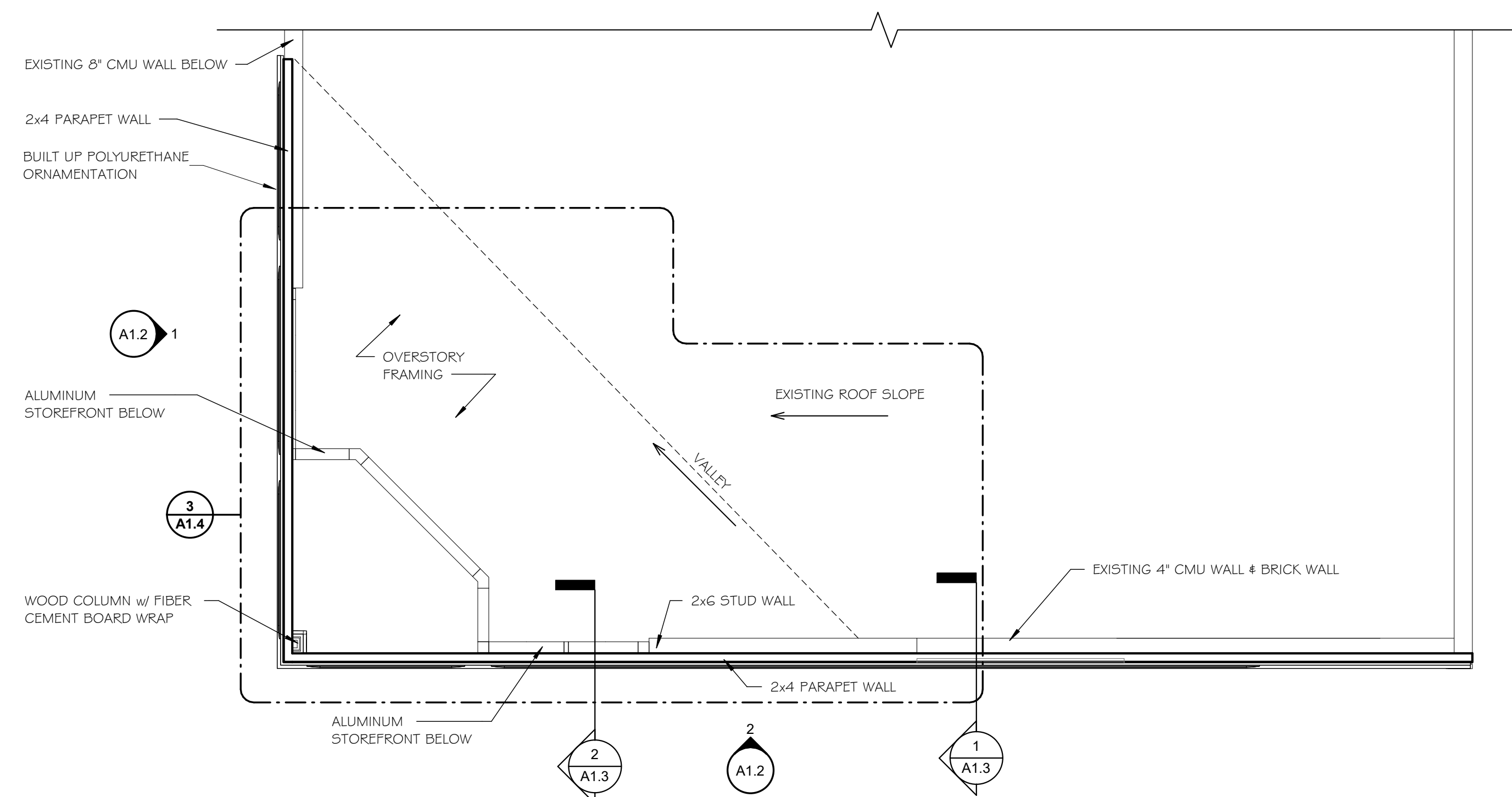
1 LEVEL 1 - EXISTING
1/4" = 1'-0"



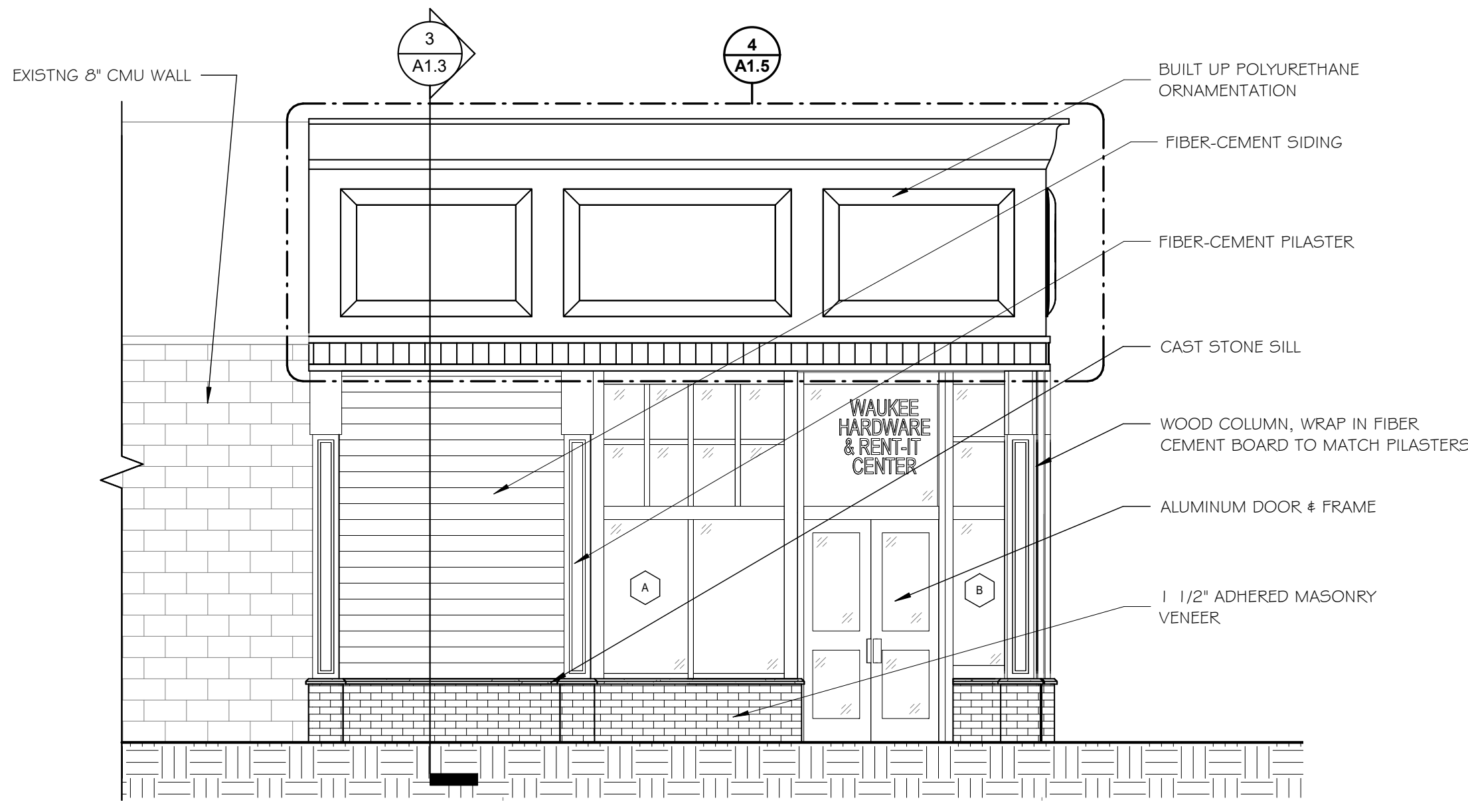
2 CORNER ENTRY NEW
1/4" = 1'-0"



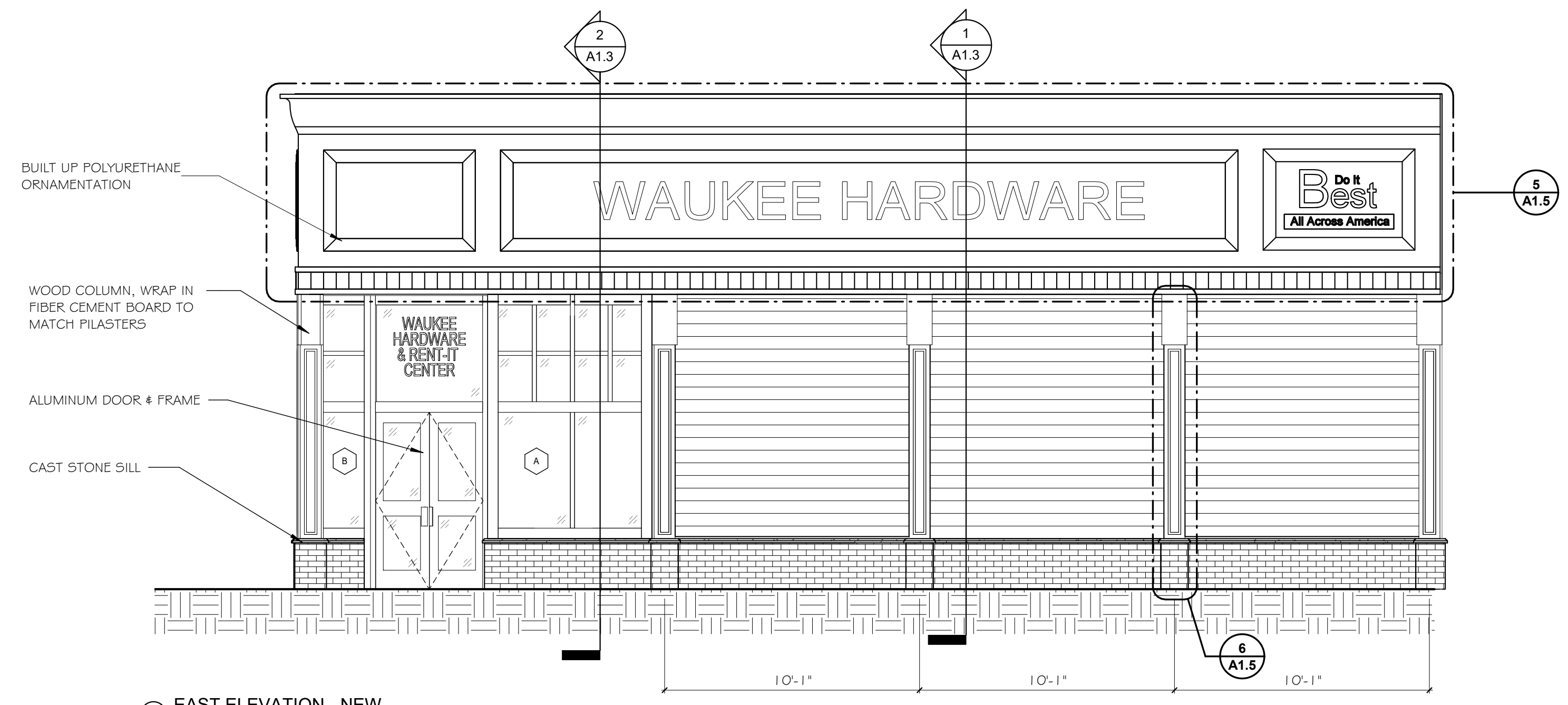
3 LEVEL 1 - DEMO
1/4" = 1'-0"



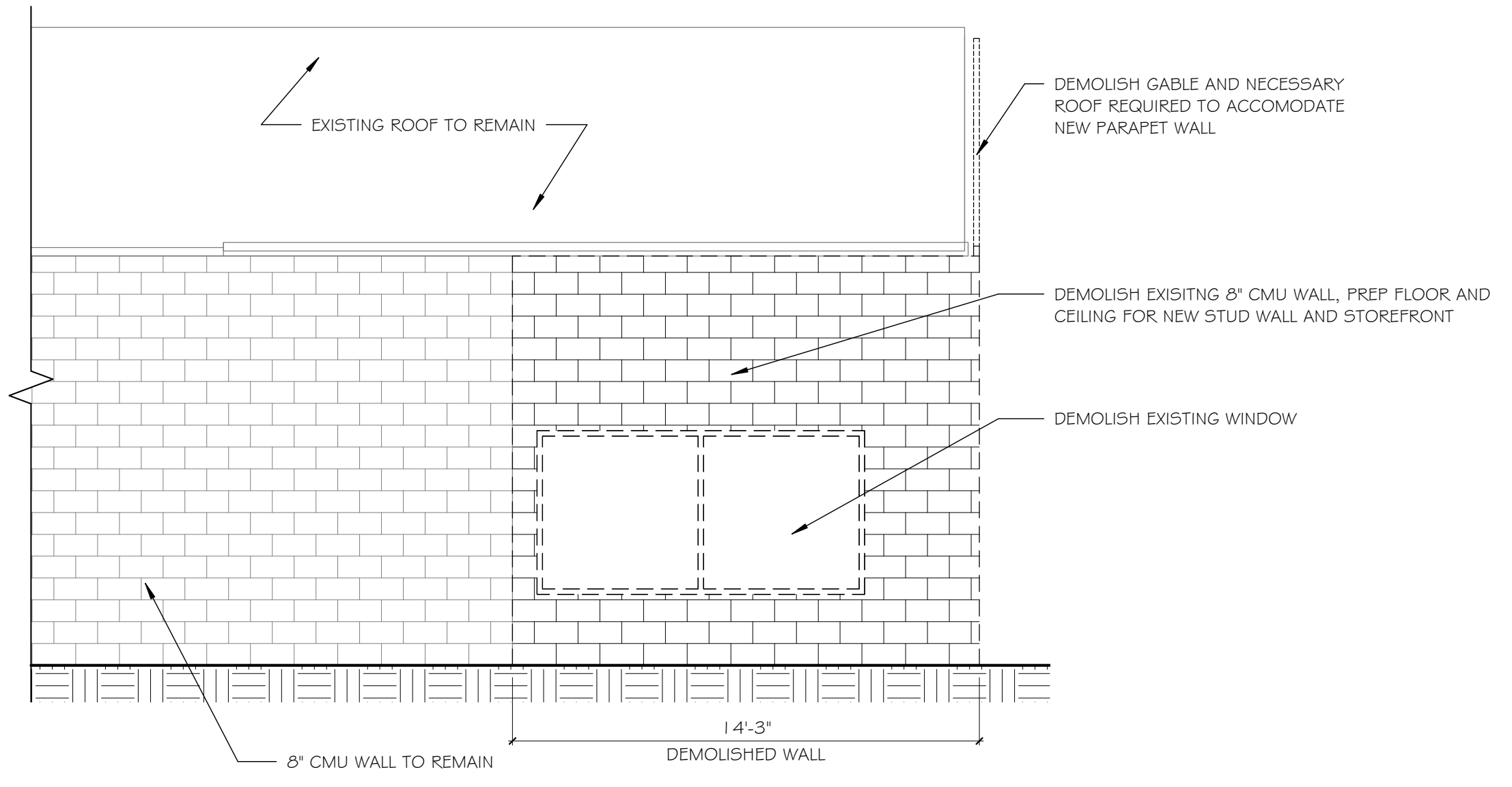
4 UPPER PARAPET WALL - NEW
1/4" = 1'-0"



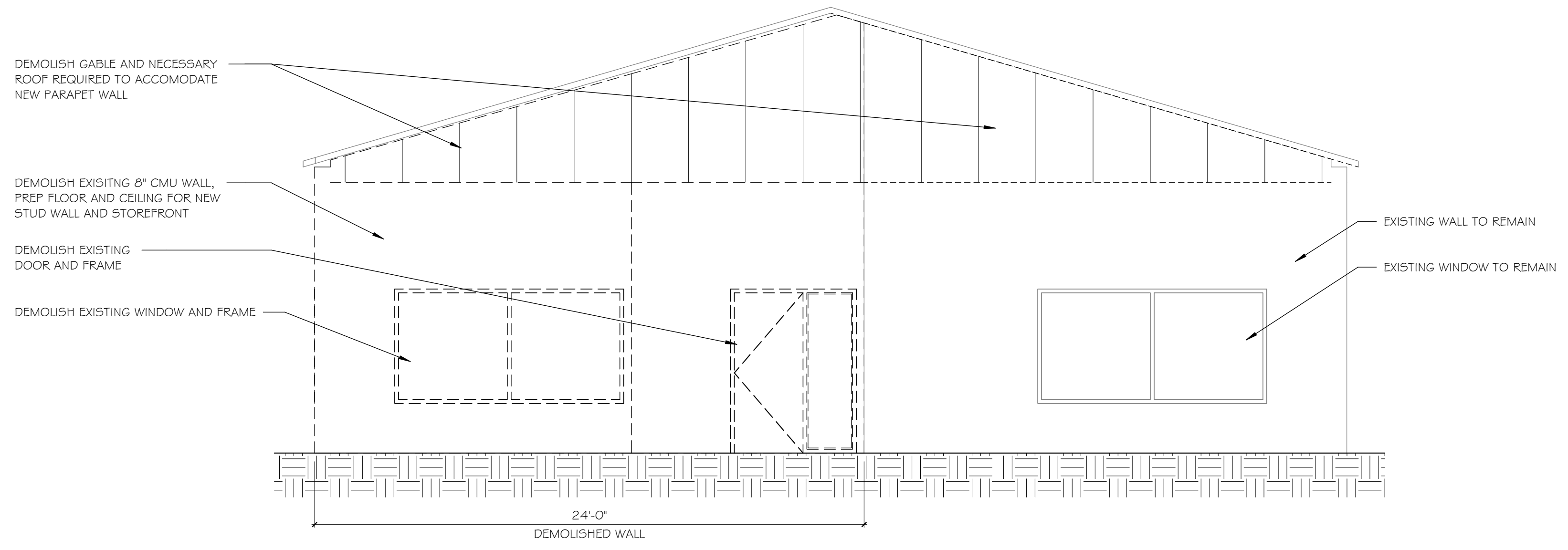
① SOUTH ELEVATION - NEW
1/4" = 1'-0"



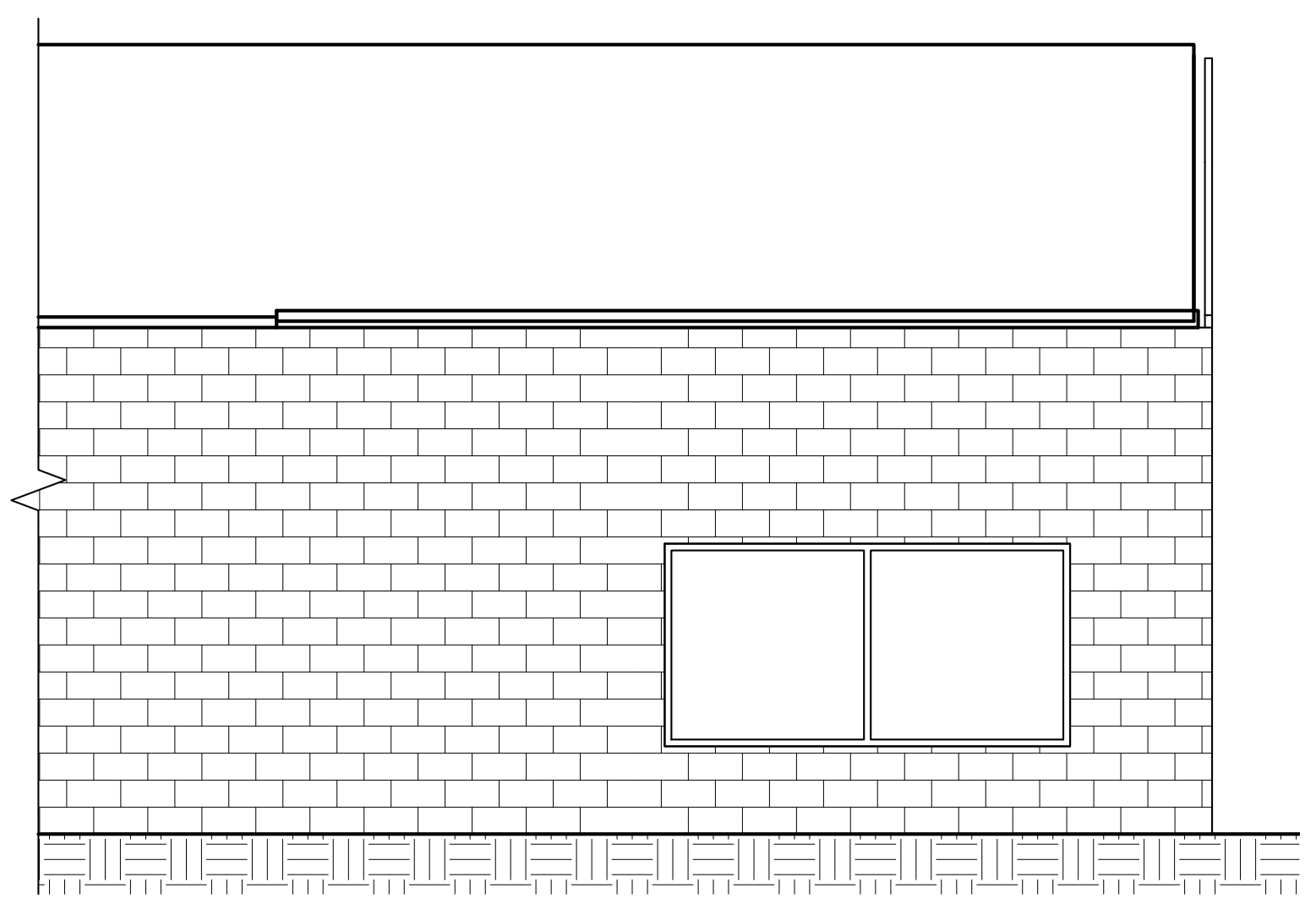
② EAST ELEVATION - NEW
1/4" = 1'-0"



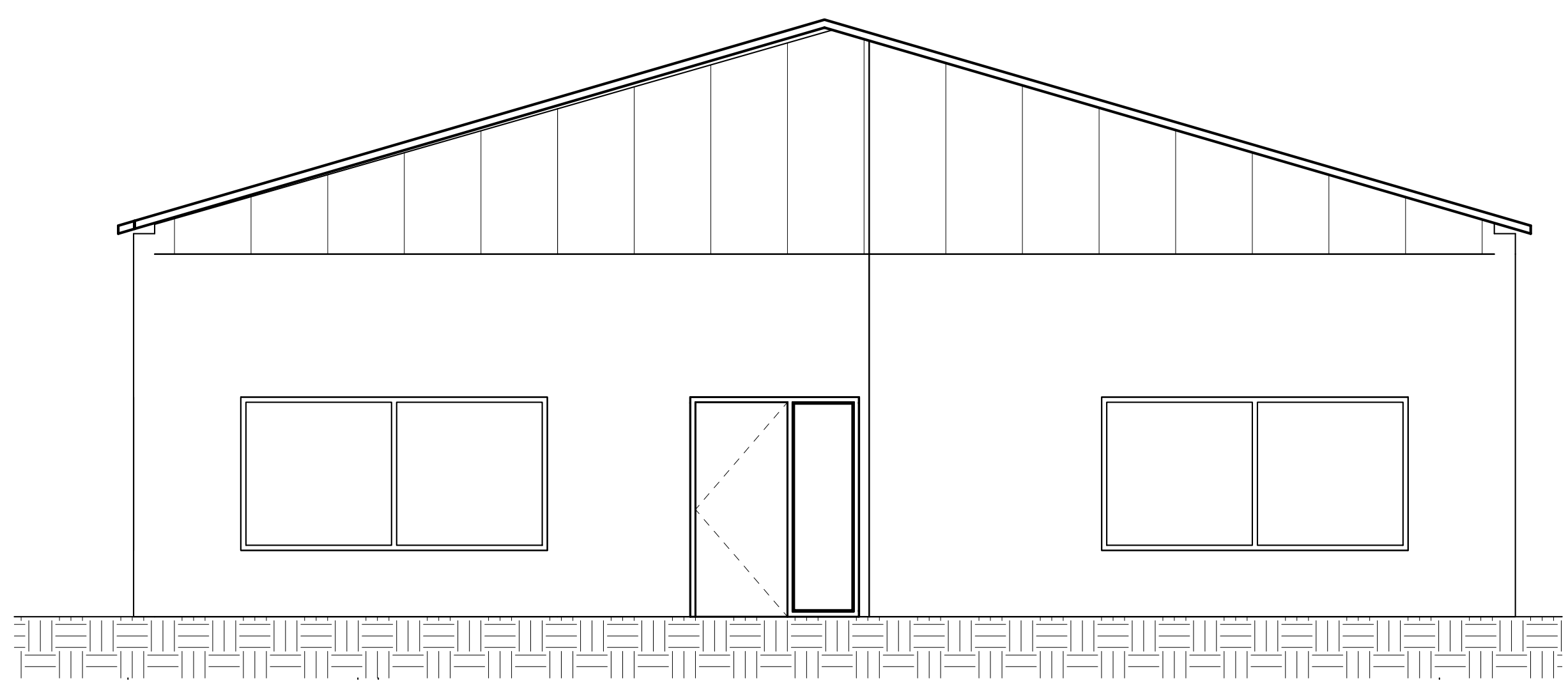
③ SOUTH ELEVATION - DEMO
1/4" = 1'-0"



④ EAST ELEVATION - DEMO
1/4" = 1'-0"



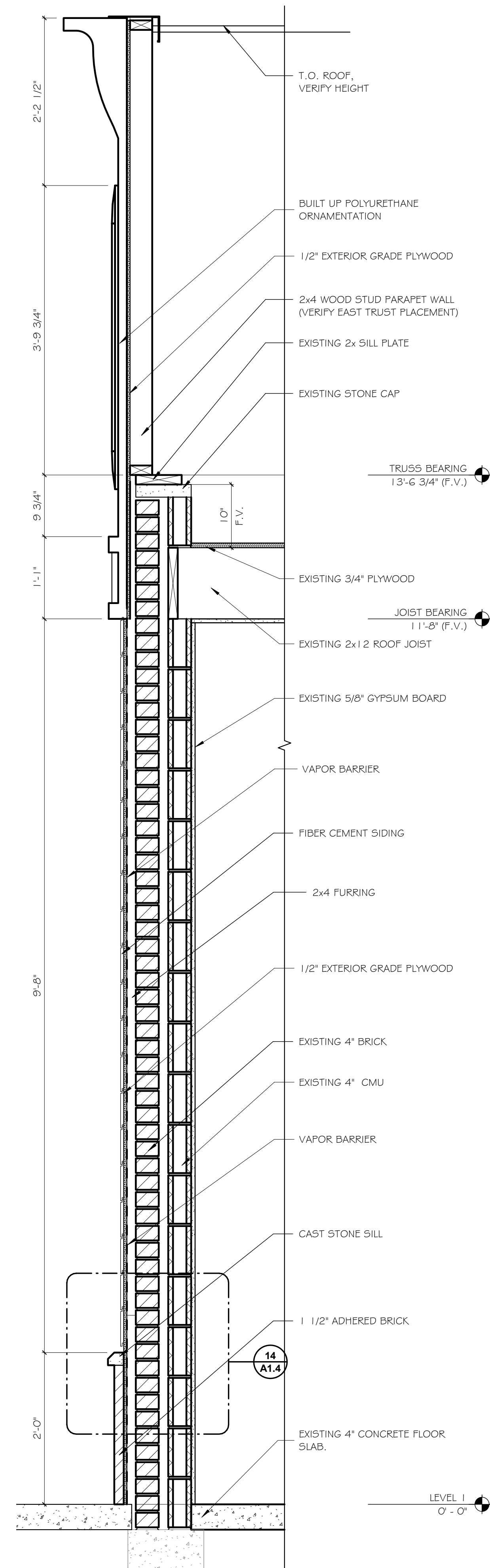
⑤ SOUTH ELEVATION - EXISTING
1/4" = 1'-0"



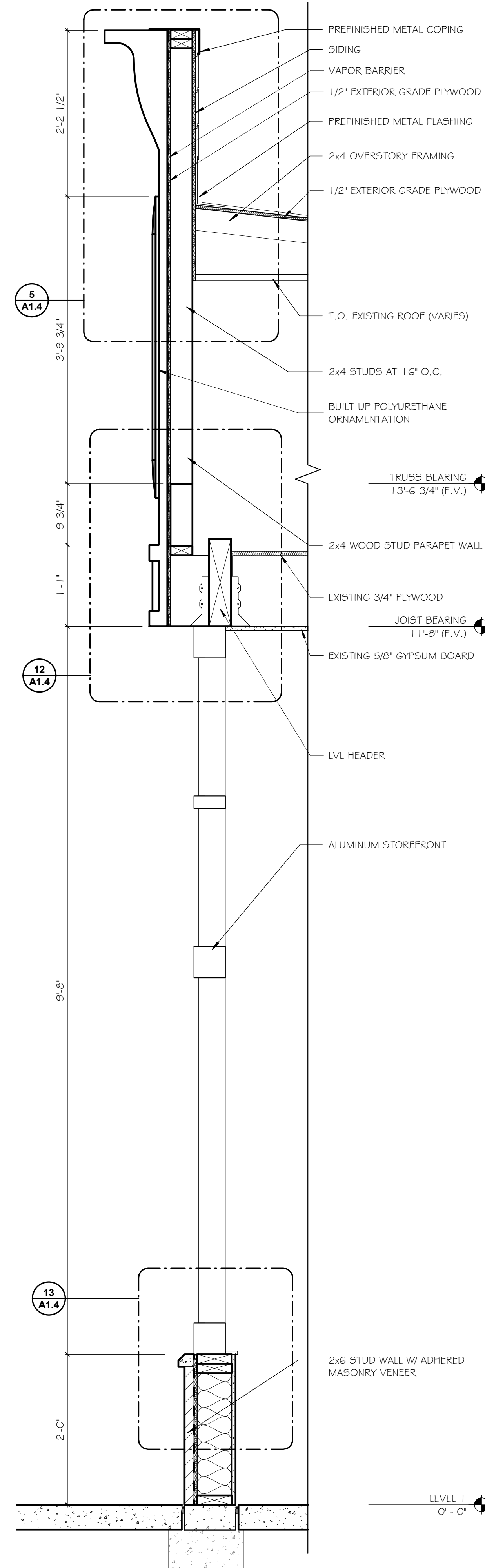
⑥ EAST ELEVATION - EXISTING
1/4" = 1'-0"

3/20/2018 1:48:55 PM G:\Project Files\Waukee - 218006 Waukee Hardware Front Repair\02 - Drawing Files\02 - Arch\Waukee Hardware R18.rvt

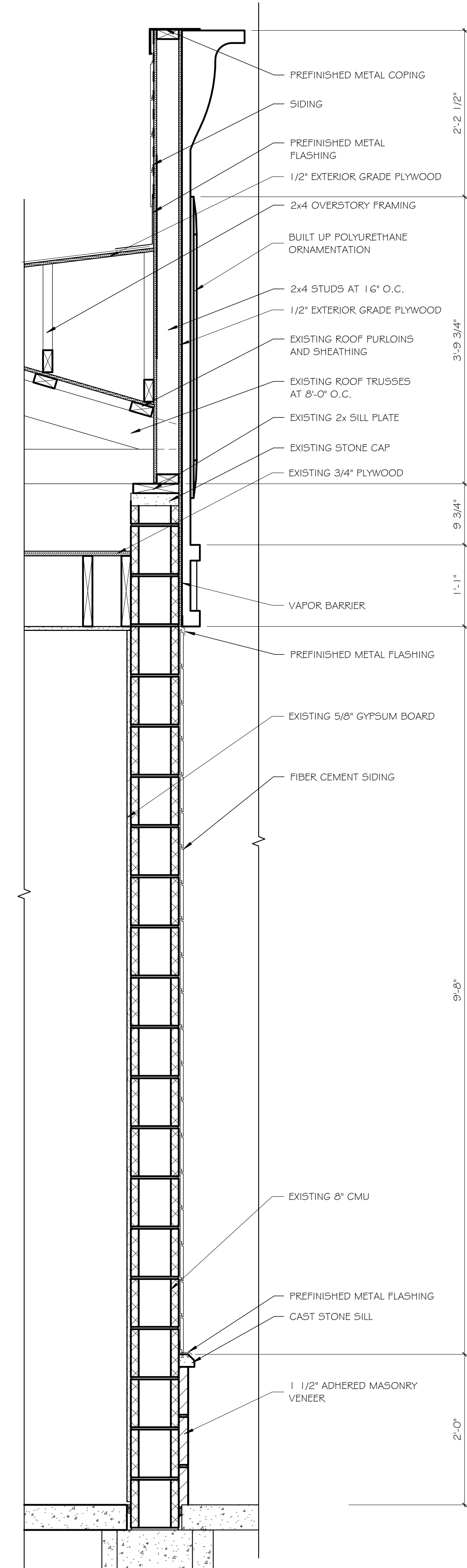
OWNER
TITLE ELEVATIONS
PROJECT NUMBER 218006
DATE 03/20/18
REVISIONS
△
△



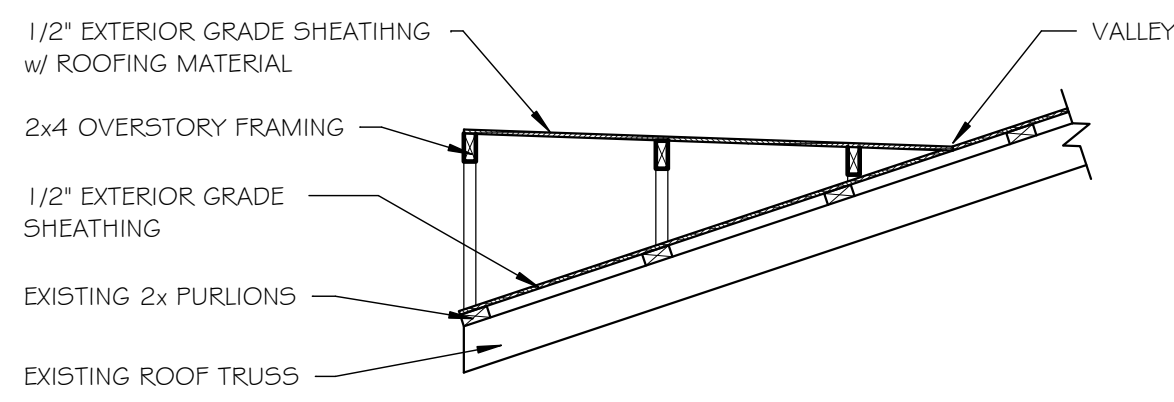
① WALL SECTION AT 4" CMU WALL
1" = 1'-0"



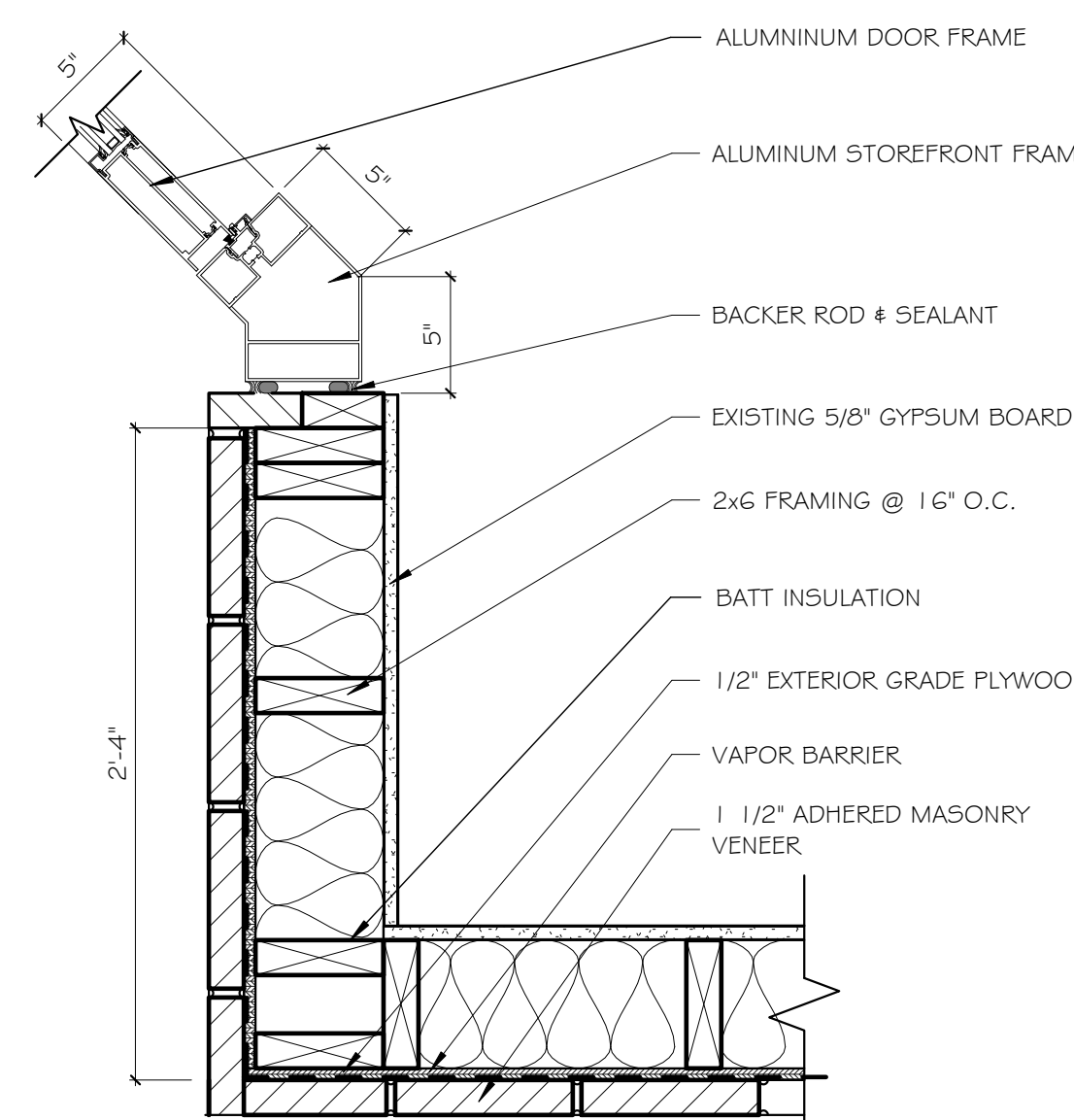
② WALL SECTION AT STOREFRONT
1" = 1'-0"



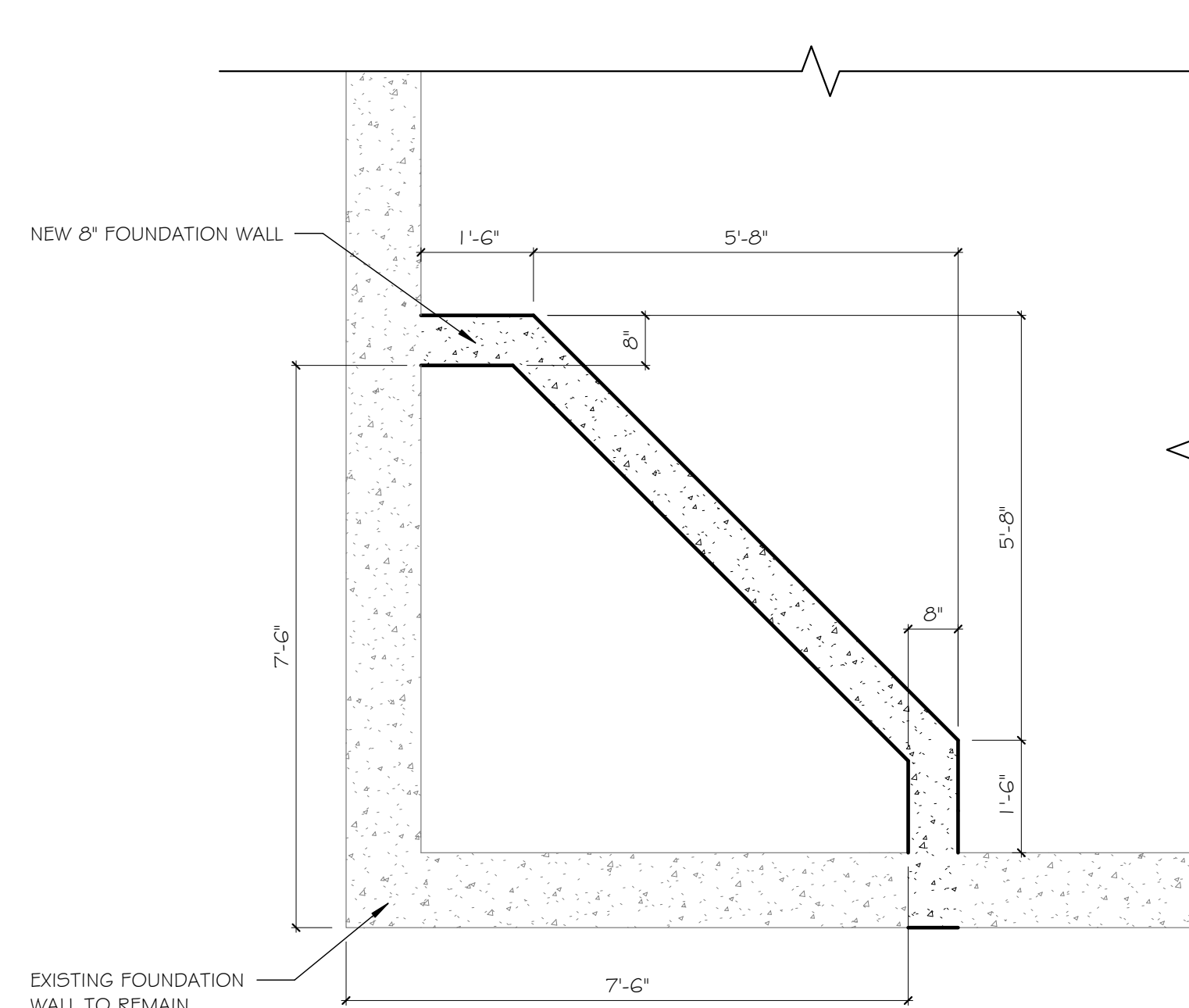
③ WALL SECTION AT 8" CMU TO REMAIN
1" = 1'-0"



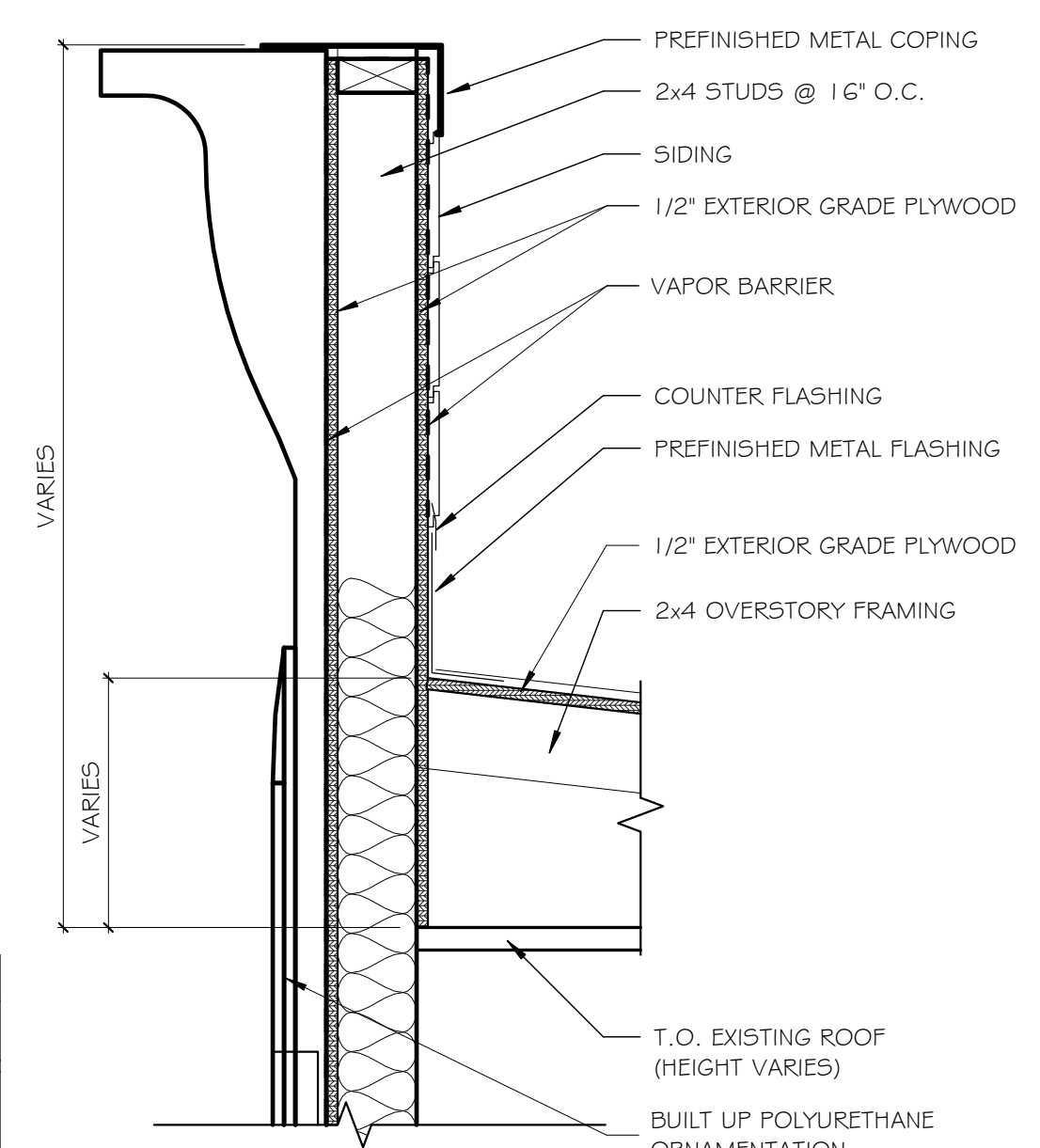
1 OVERSTORY FRAMING DETAIL
1/2" = 1'-0"



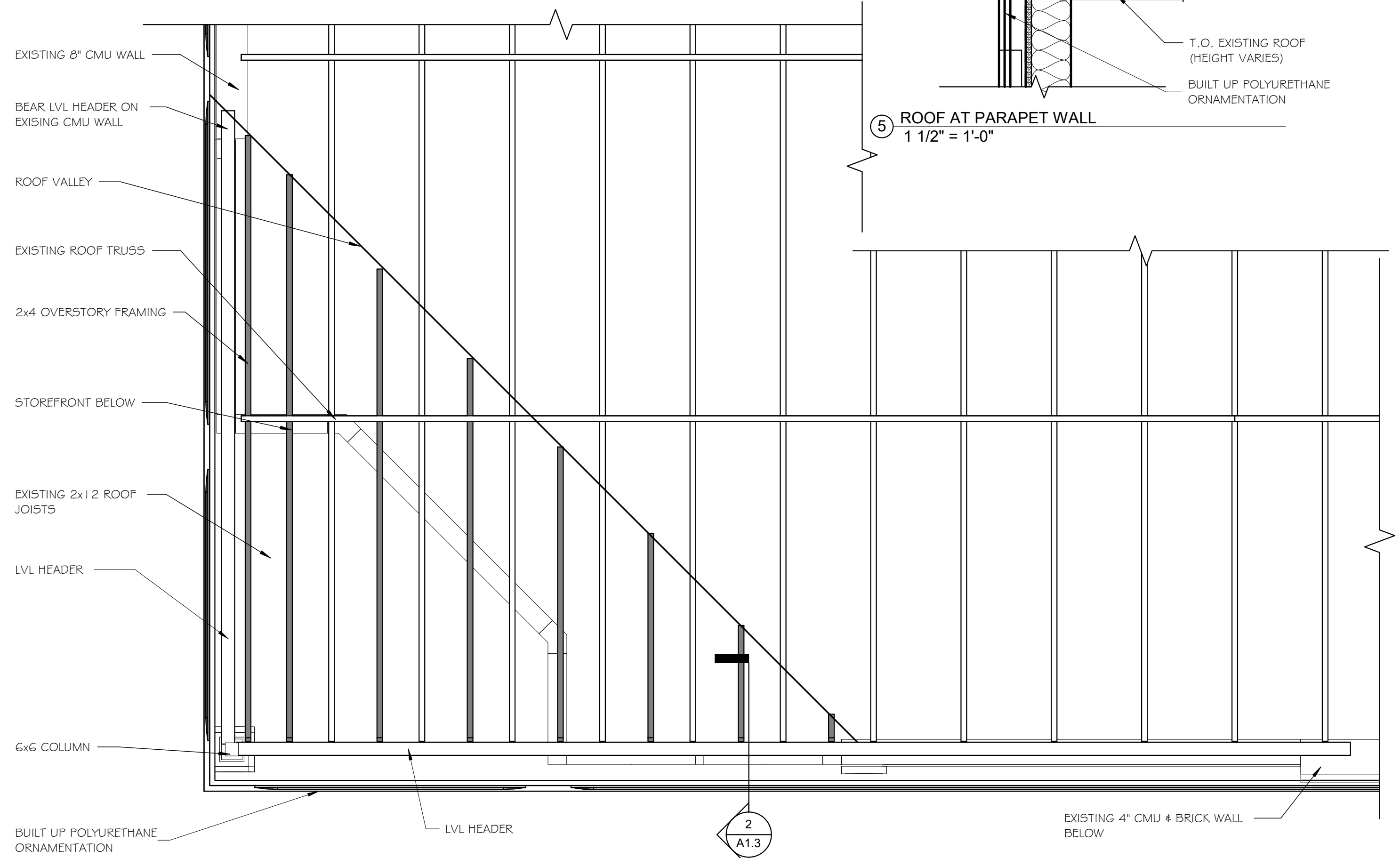
4 ENTRY DOOR CORNER DETAIL
1 1/2" = 1'-0"



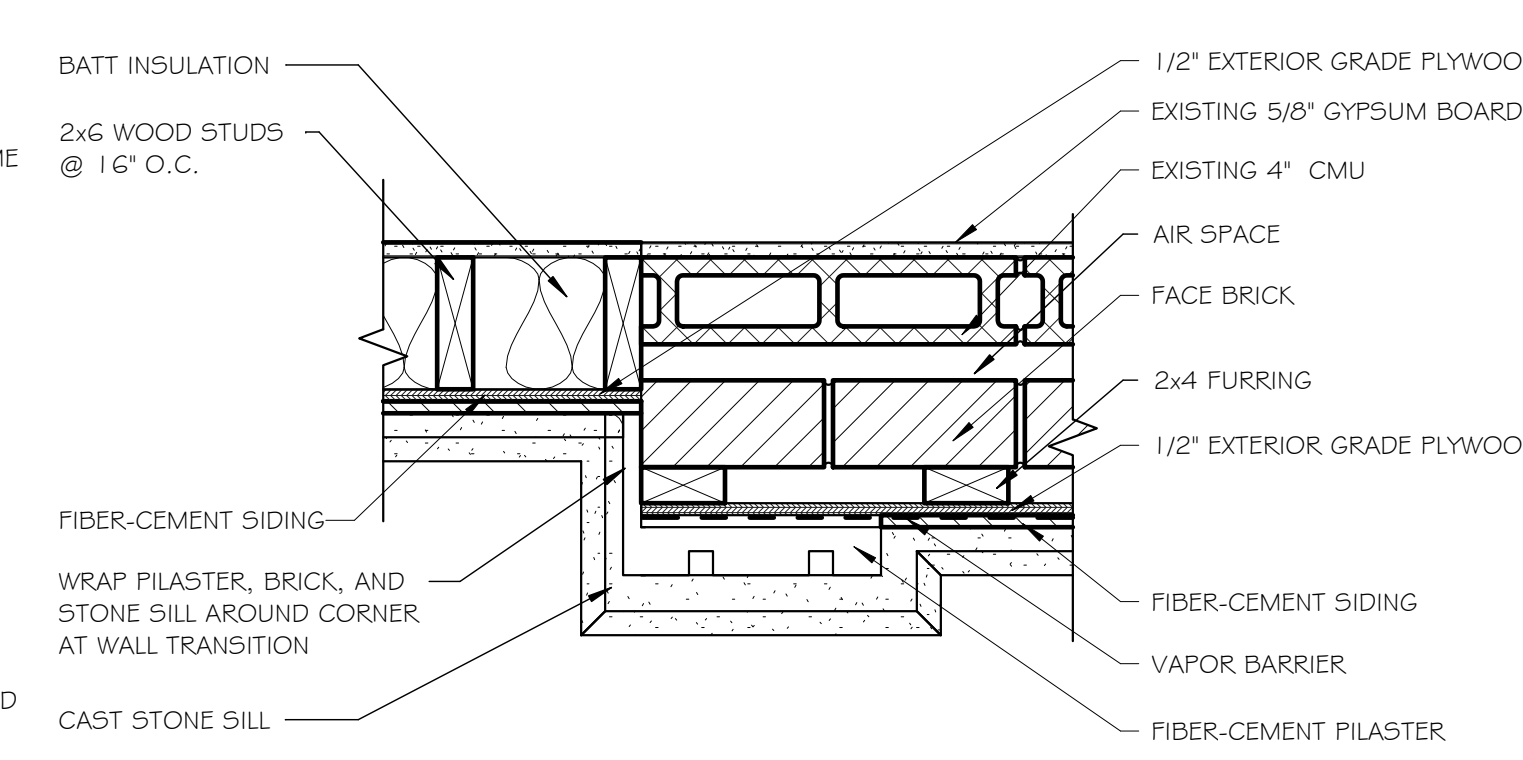
2 FOUNDATION
1/2" = 1'-0"



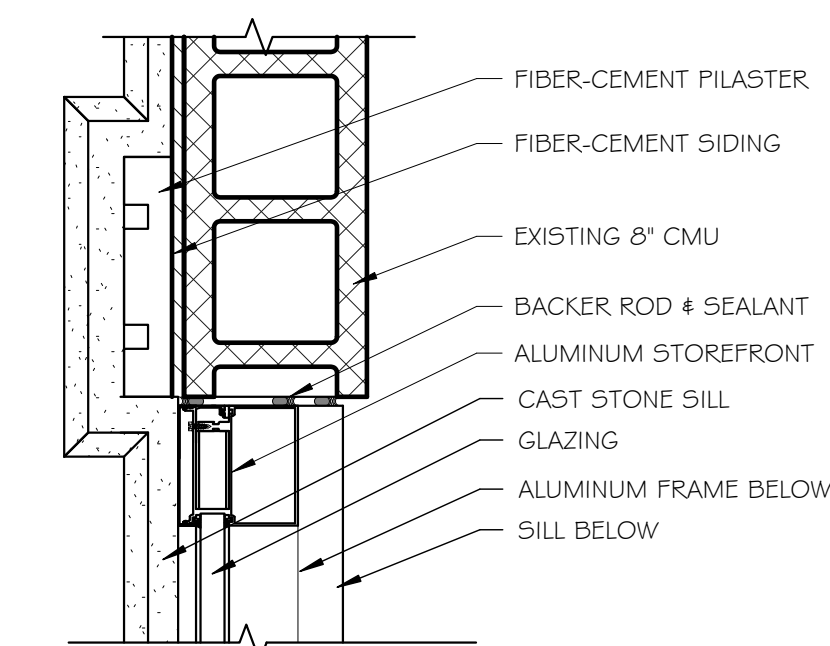
5 ROOF AT PARAPET WALL
1 1/2" = 1'-0"



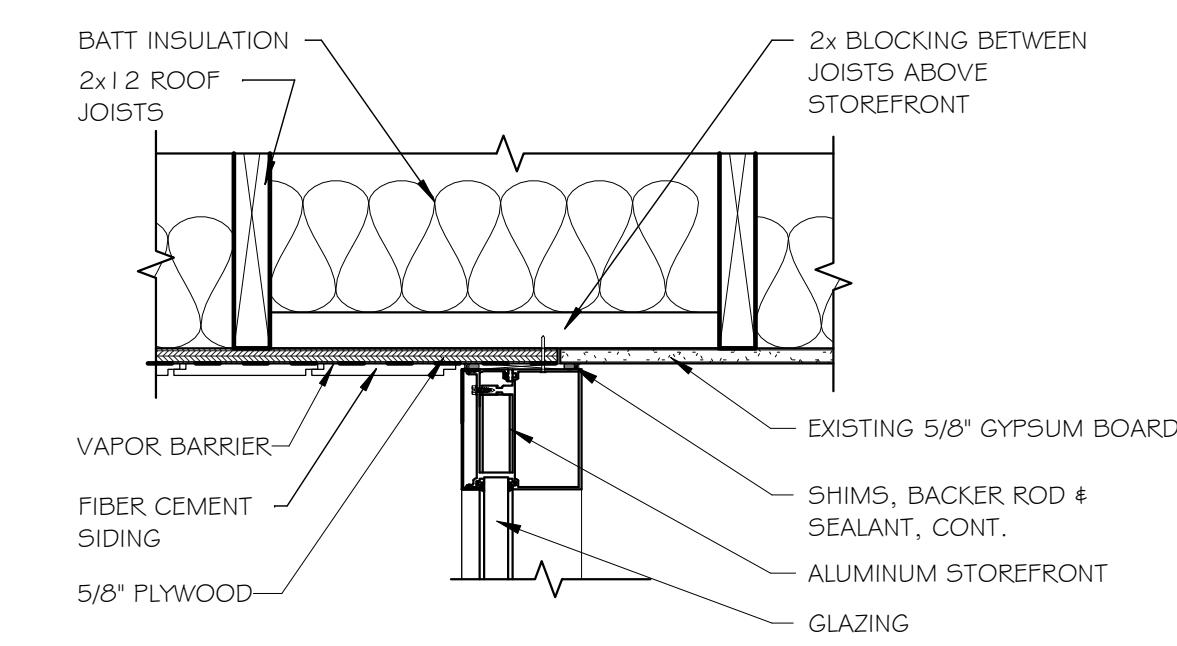
3 LEVEL 2 - ENLARGED ENTRANCE FRAMING PLAN
1/2" = 1'-0"



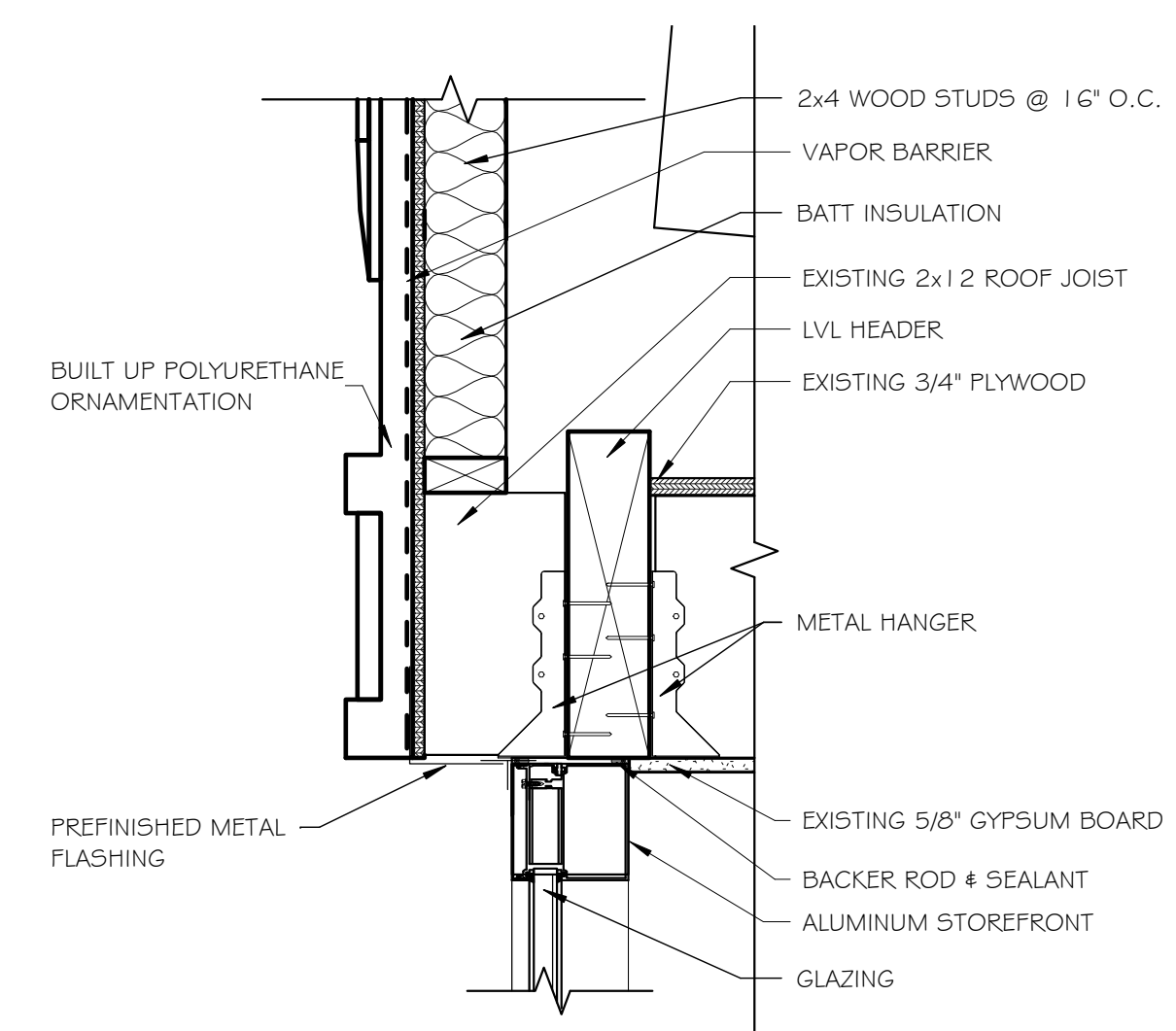
6 STUD WALL AT 4" CMU
1 1/2" = 1'-0"



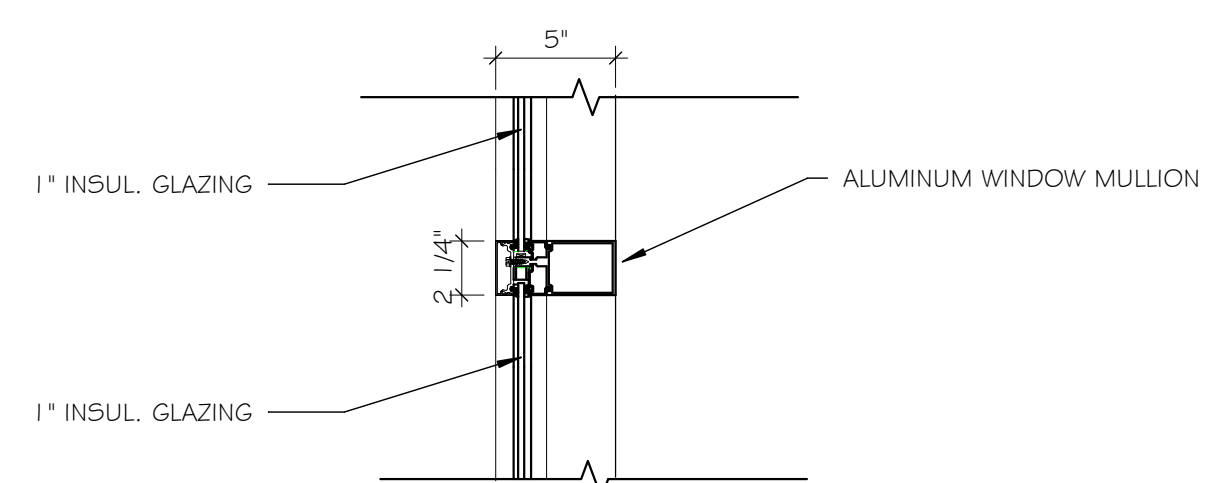
11 STOREFRONT JAMB AT EXISTING 8" CMU WALL
1 1/2" = 1'-0"



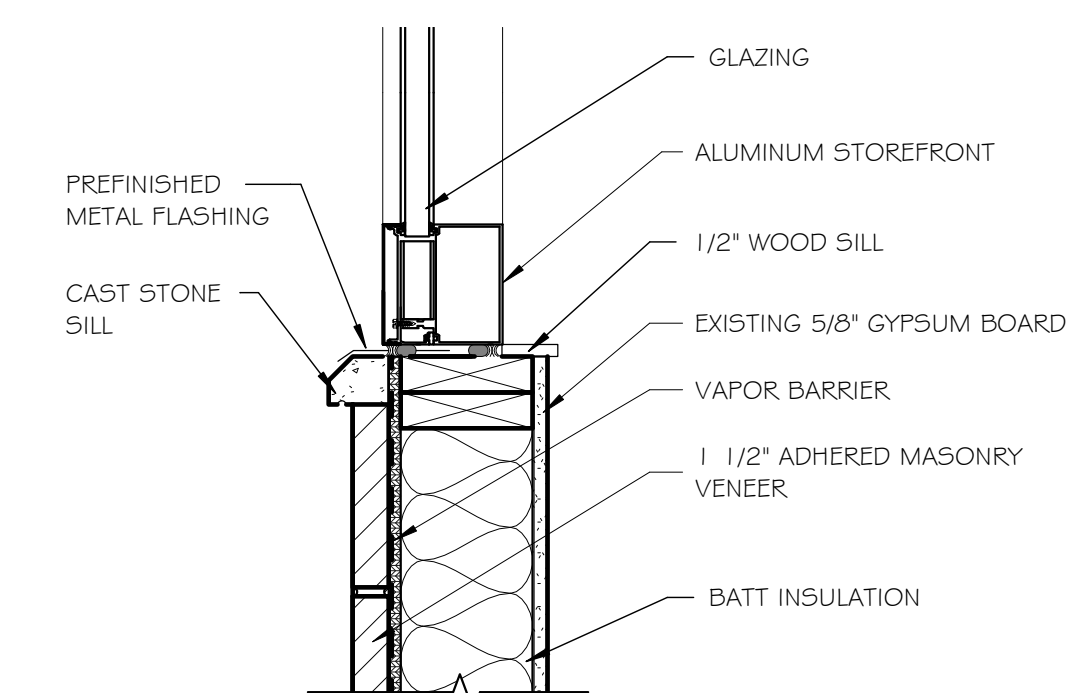
7 ALUM. FRAME JAMB DETAIL AT 6" STUDS
1 1/2" = 1'-0"



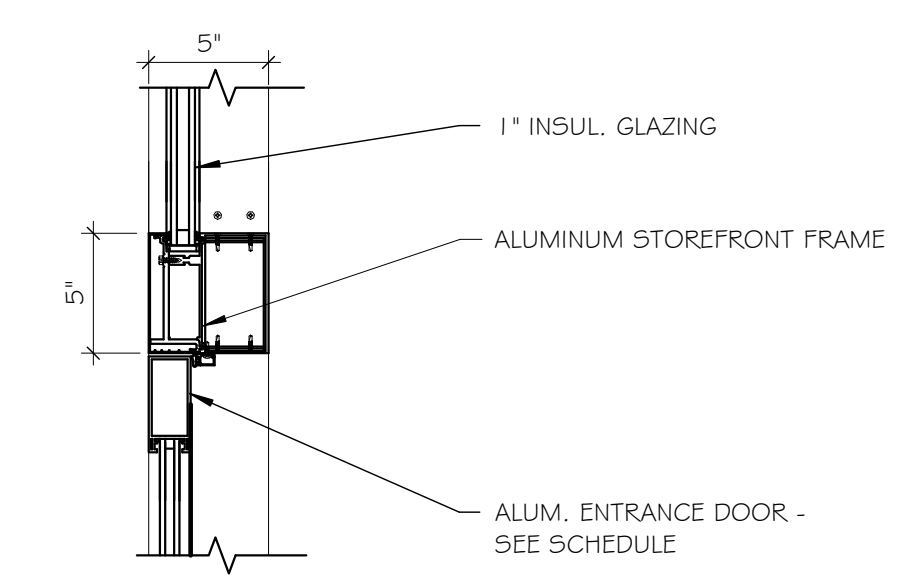
12 STOREFRONT HEAD AT STUD WALL
1 1/2" = 1'-0"



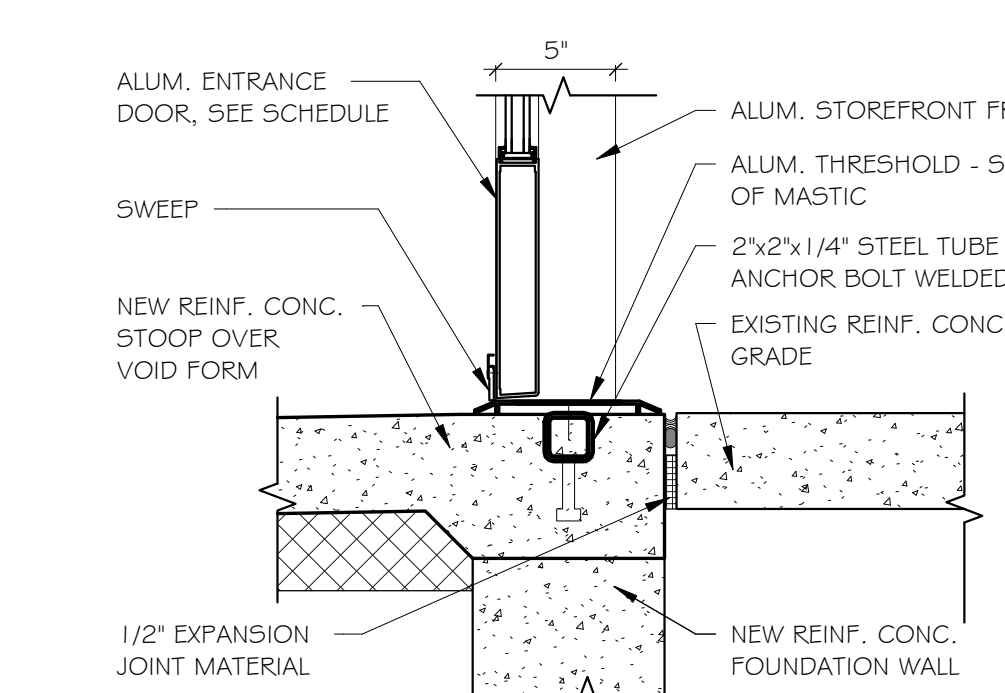
8 CURTAIN WALL MULLION DETAIL
1 1/2" = 1'-0"



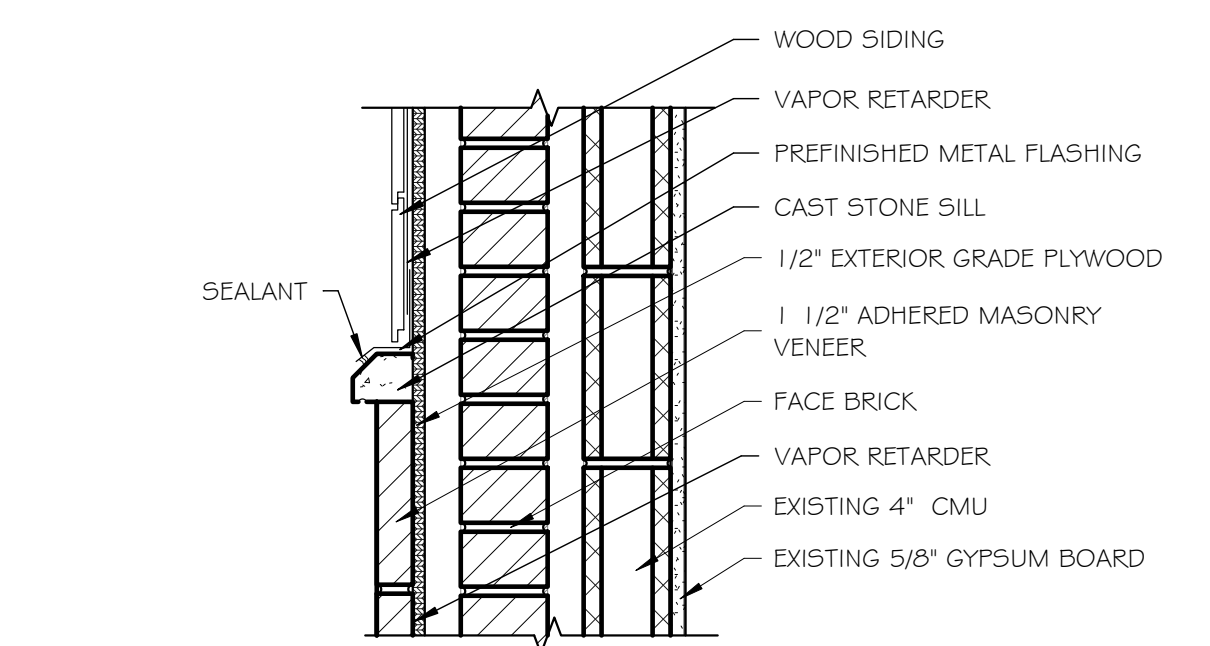
13 STOREFRONT SILL AT STUD WALL
1 1/2" = 1'-0"



9 CURTAIN WALL FRAME HEAD @ DOOR DETAIL
1 1/2" = 1'-0"



10 CURTAIN WALL THRESHOLD DETAIL
1 1/2" = 1'-0"



14 STONE SILL AT CMU WALL
1 1/2" = 1'-0"

OWNER

TITLE
DETAILS

PROJECT NUMBER
218006

DATE
03/20/18

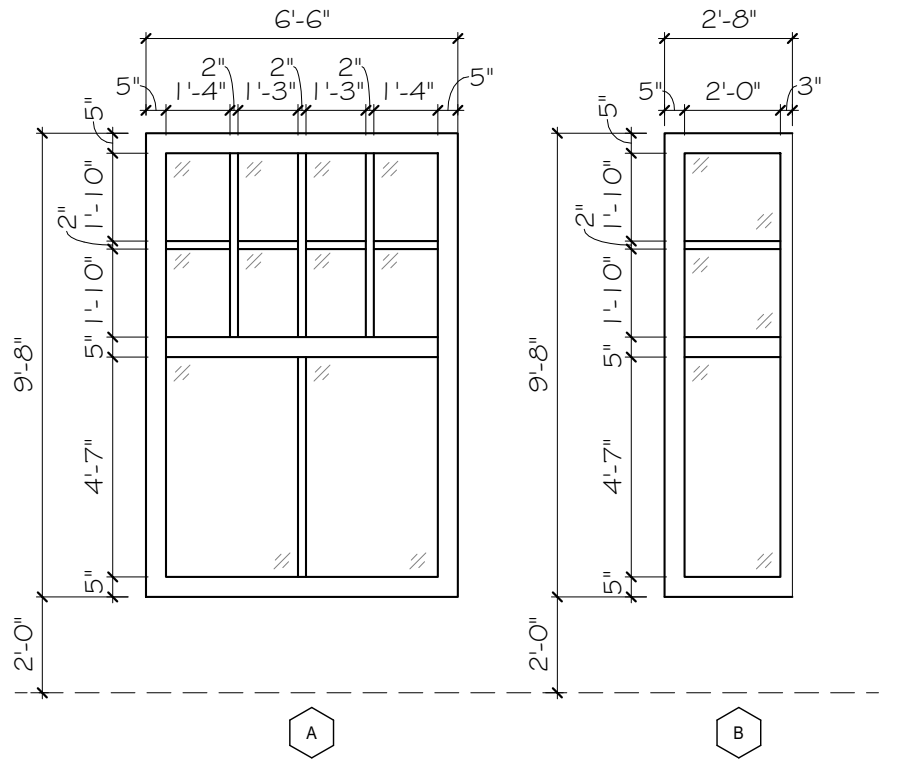
REVISIONS
△
△

A1.4

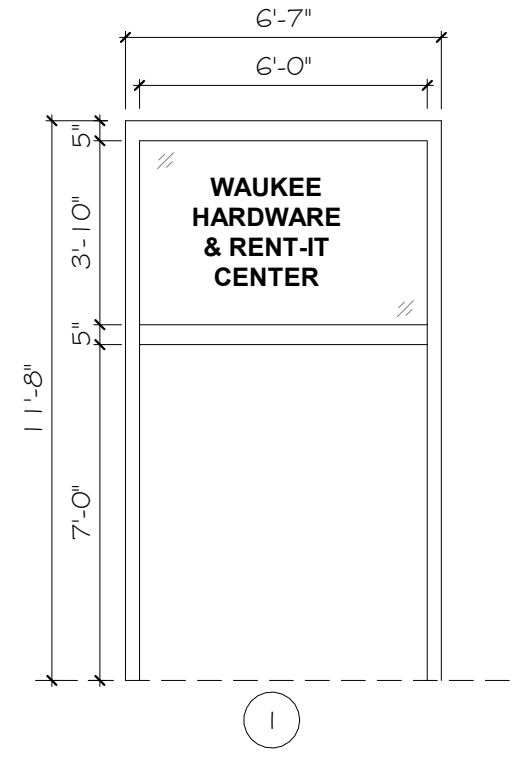
3/20/2018 1:46:57 PM G:\Project Files\Waukee - 218006 Waukee Hardware Front Repair\02 - Drawing Files\02 - Arch\Waukee Hardware R18.rvt

WAUKEE HARDWARE & RENT-IT CENTER

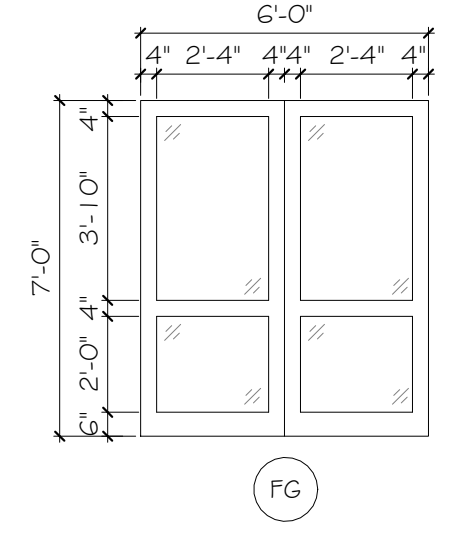
380 6TH ST., WAUKEE, IA 50263



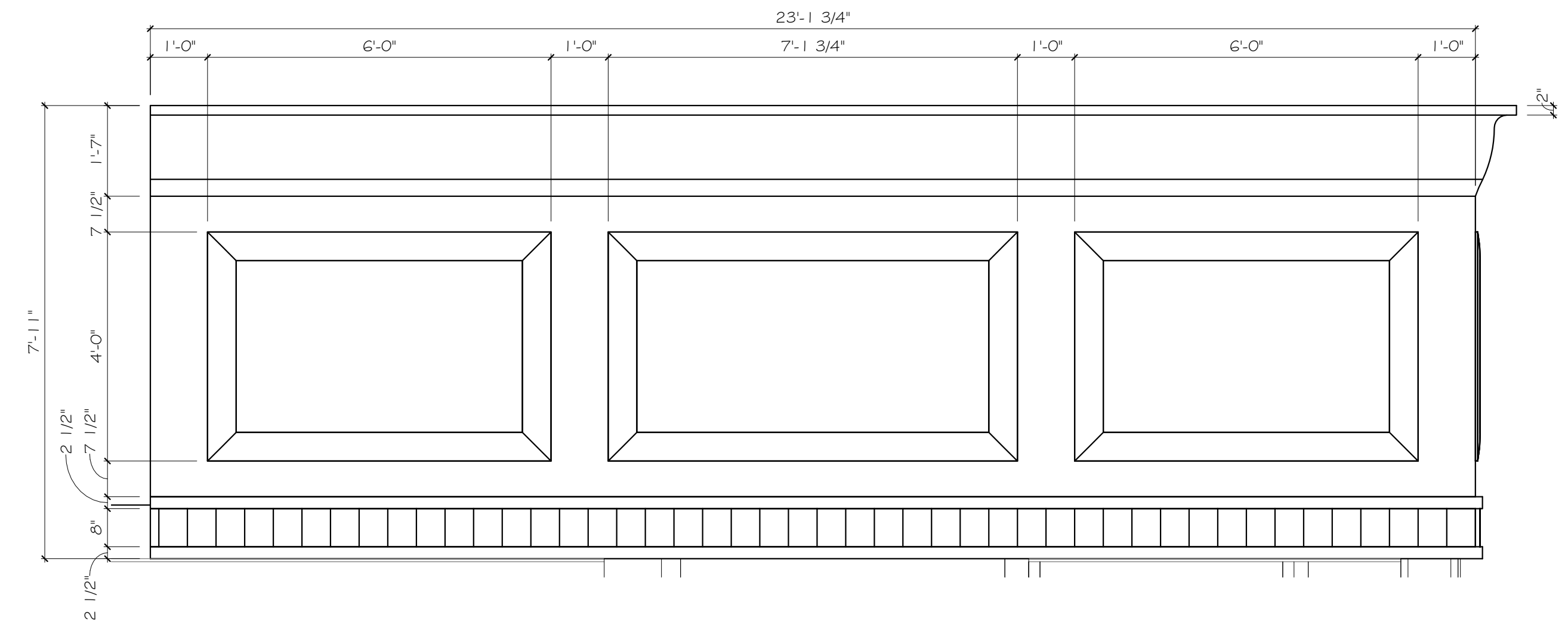
① STOREFRONT FRAME TYPES
1/4" = 1'-0"



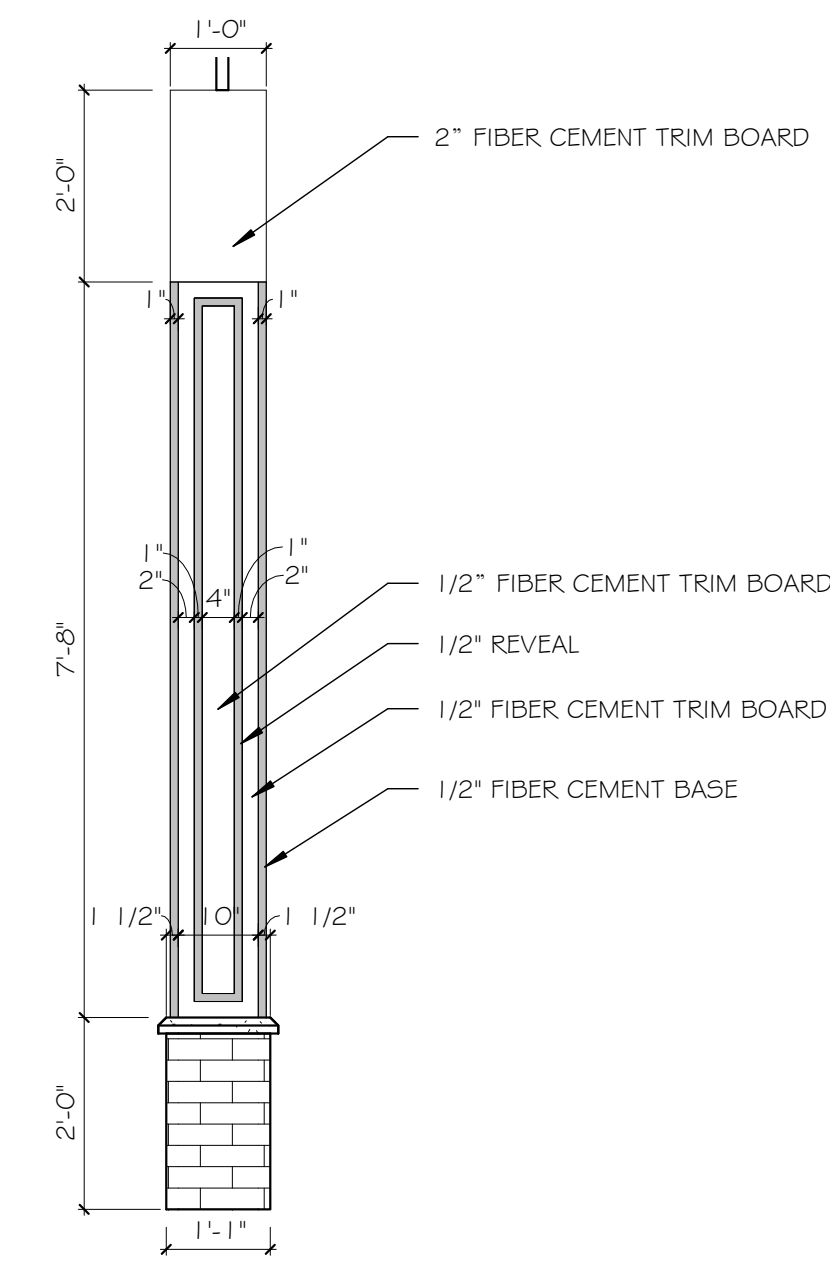
② DOOR FRAME TYPES
1/4" = 1'-0"



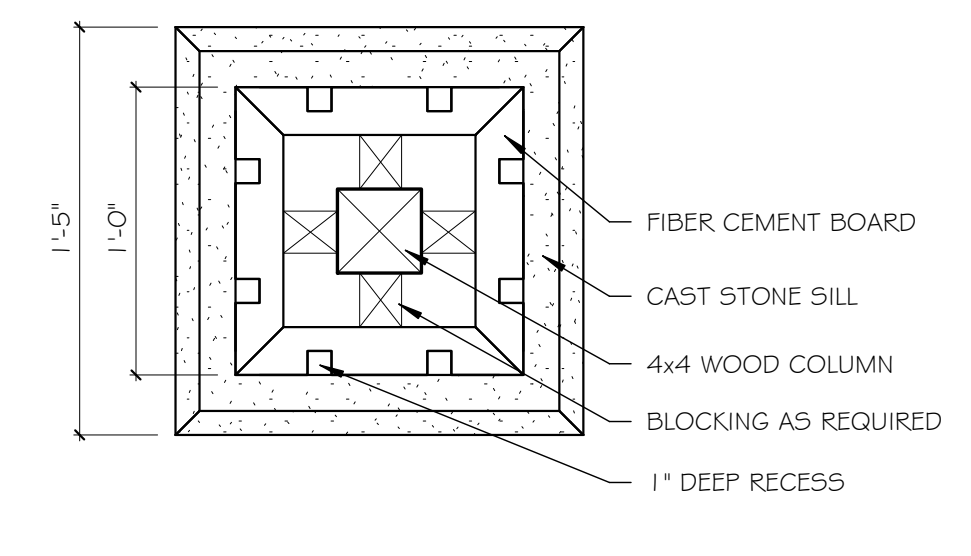
③ DOOR TYPES
1/4" = 1'-0"



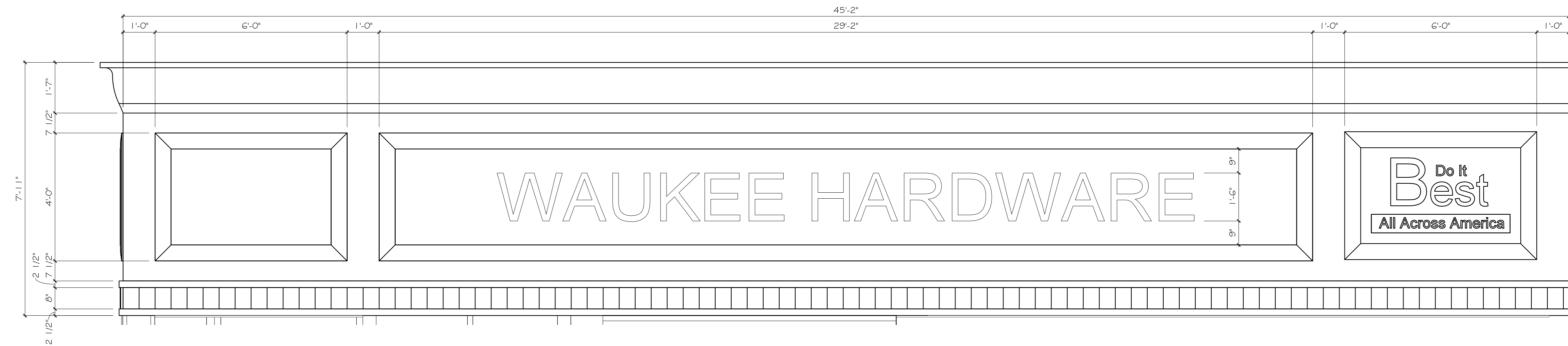
④ WEST ELEVATION - PARAPET DETAIL
1/2" = 1'-0"



⑥ PILASTER DETAIL
1/2" = 1'-0"



⑦ COLUMN DETAIL
1 1/2" = 1'-0"



⑤ SOUTH ELEVATION - PARAPET DETAIL
1/2" = 1'-0"

OWNER

TITLE
DETAILS

PROJECT NUMBER
218006

DATE
03/20/18

REVISIONS
△
△