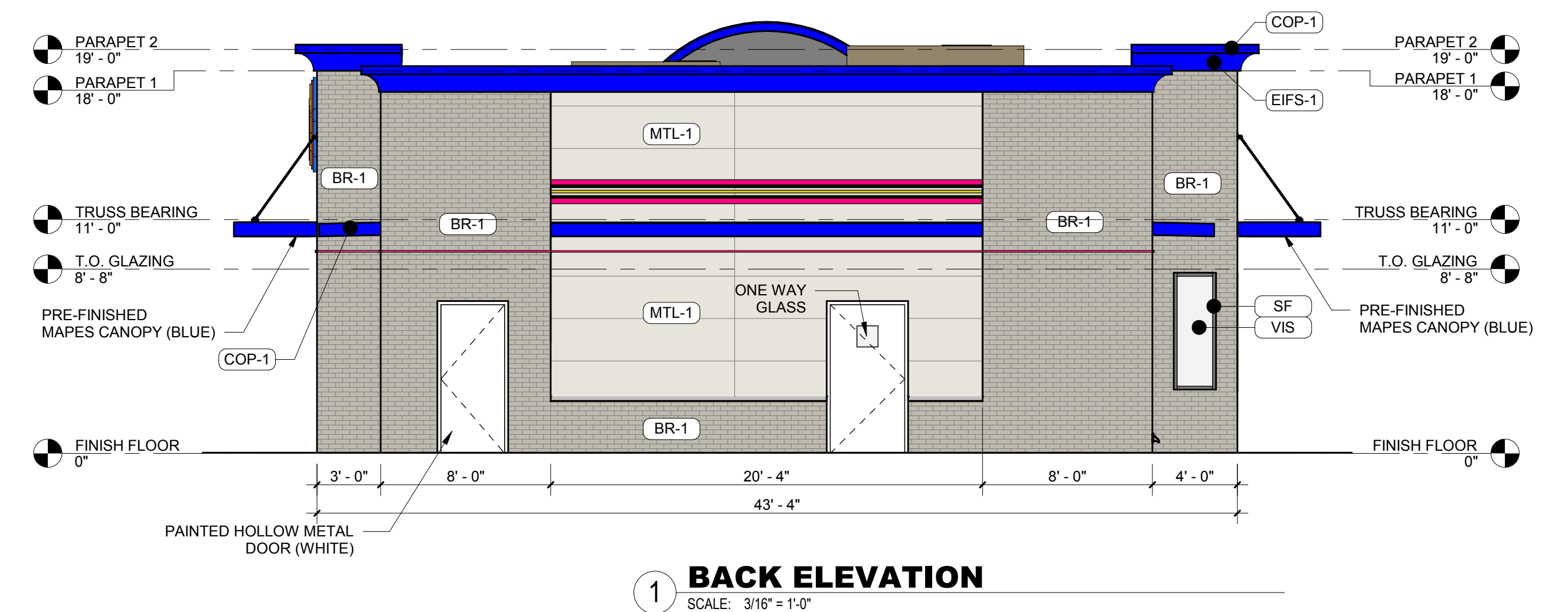
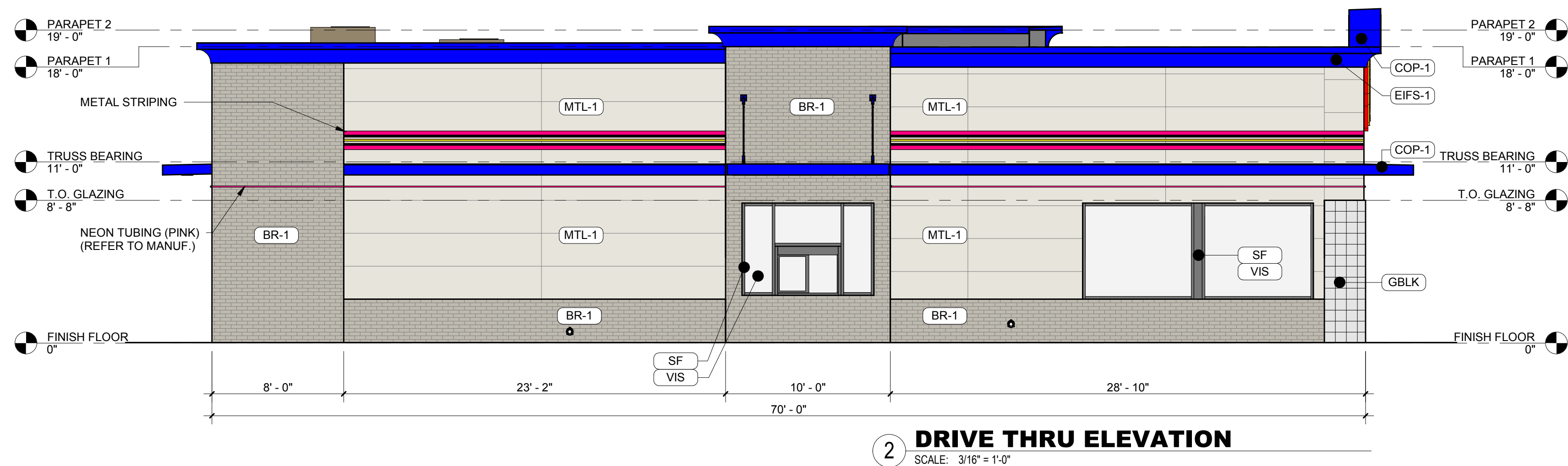


EXTERIOR MATERIAL LEGEND	
MAT. LABEL	MATERIAL DESCRIPTION
BR-1	GLAZED BRICK; SIOUX CITY BRICK; ELGIN BUTLER, 4638 PEPPERED GRAY OR SIM.; GLAZED BRICK; NATURAL MORTAR
COP-1	PRE-FINISHED METAL COPING; ELECTRIC BLUE
COP-2	PRE-FINISHED METAL COPING; CLEAR ANODIZED
EIFS-1	EXTERIOR INSULATION FINISH SYSTEM; SMOOTH COLOR; ELECTRIC BLUE
GBLK	4"x8"x8" GLASS BLOCK, VERTICAL JOINTS STACKED, NATURAL GROUT
MTL-1	METAL PANEL; MBCI 2" INSULATED METAL PANEL, GRAND H; REVEAL PATTERN 12'-0" WIDE x 2'-0" TALL; W/1/4" REVEAL; COLOR: ALMOND
SF	T.B. ALUMINUM STOREFRONT FRAMING; CLEAR ANODIZED FINISH
VIS	1" INSULATED VISION GLASS; CLEAR W/ LOW E COATING



This drawing has been prepared by the Architect, or under the Architect's direct supervision. This drawing is provided as an instrument of service by the Designer / Architect and is intended for use on this project only. Any reproduction, use, or disclosure of information contained herein without the prior written consent of the Architect is strictly prohibited. © Copyright 2018 by Simonson & Associates Architects, L.L.C.

B-BOPS
HICKMAN ROAD & ALICE'S ROAD
WAUKEE, IA
08/21/2018

24"x36" SHEET (FULL SIZE)
- SCALE IS AS NOTED
12"x18" SHEET (HALF SIZE)
- SCALE IS ONE-HALF OF WHAT IS NOTED
OTHER SHEET SIZES NOT TO SCALE
SAA JOB #: 18057

simonson

simonson & associates architects llc
1717 ingsersoll avenue suite 117 des moines ia 50309
phn 515 440 5626 www.simonsonassoc.com