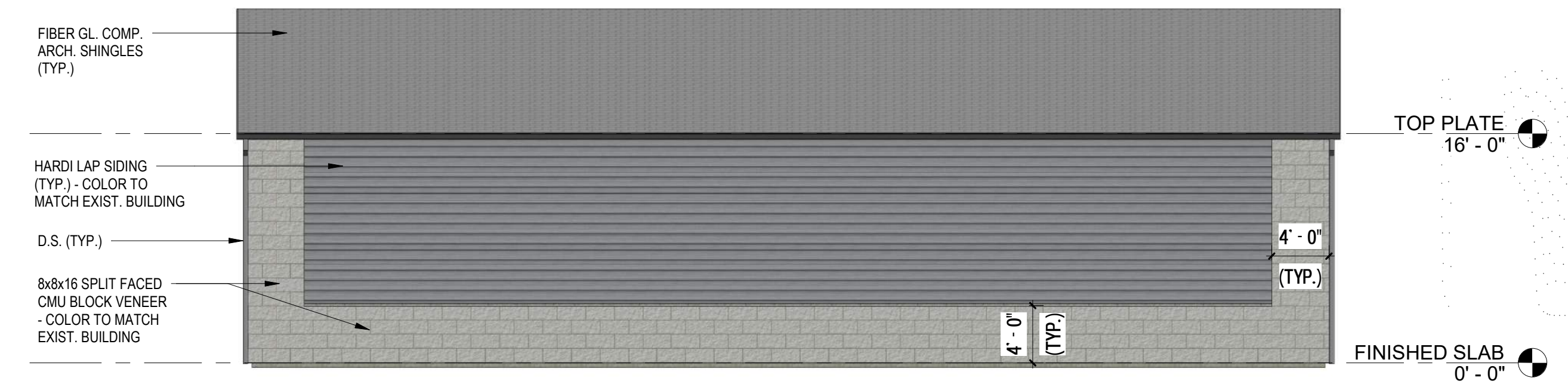
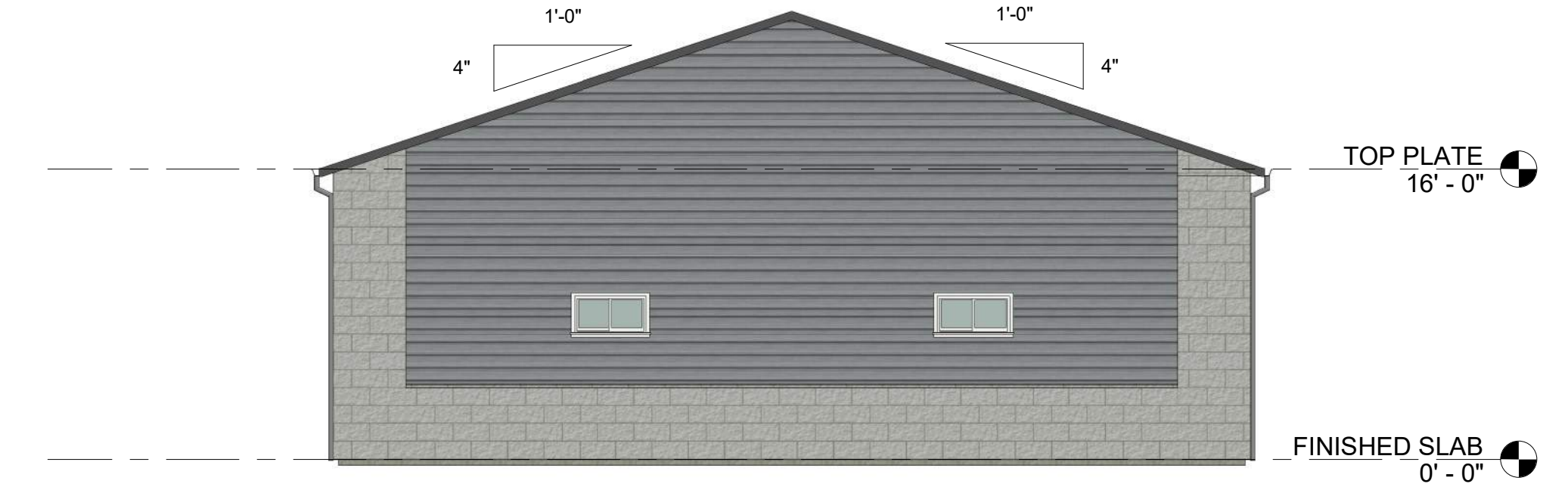


SB&A ARCHITECTS
 1421 S Bell Ave Ste. 101
 Ames, Iowa 50010
 phone (515) 232-8447
 fax (515) 232-9521
 www.sbaarchitecture.com

THE DESIGN PROFESSIONAL MAKES ANY AND ALL RESPONSIBILITY AND LIABILITY FOR ANY PROBLEMS THAT ARISE FROM FAILURE TO COMPLY WITH THE IAWA CODES OR FROM THE DESIGN INTENT THEY CONVEY, OR FROM PROBLEMS THAT ARISE FROM OTHERS' FAILURE TO COMPLY WITH THE IAWA CODES OR FROM PROFESSIONAL'S GUIDANCE, WITH RESPECT TO ANY ERRORS, OMISSIONS, INCONSISTENCIES, AMBIGUITIES OR CONFLICTS THAT ARE ALLEGED.



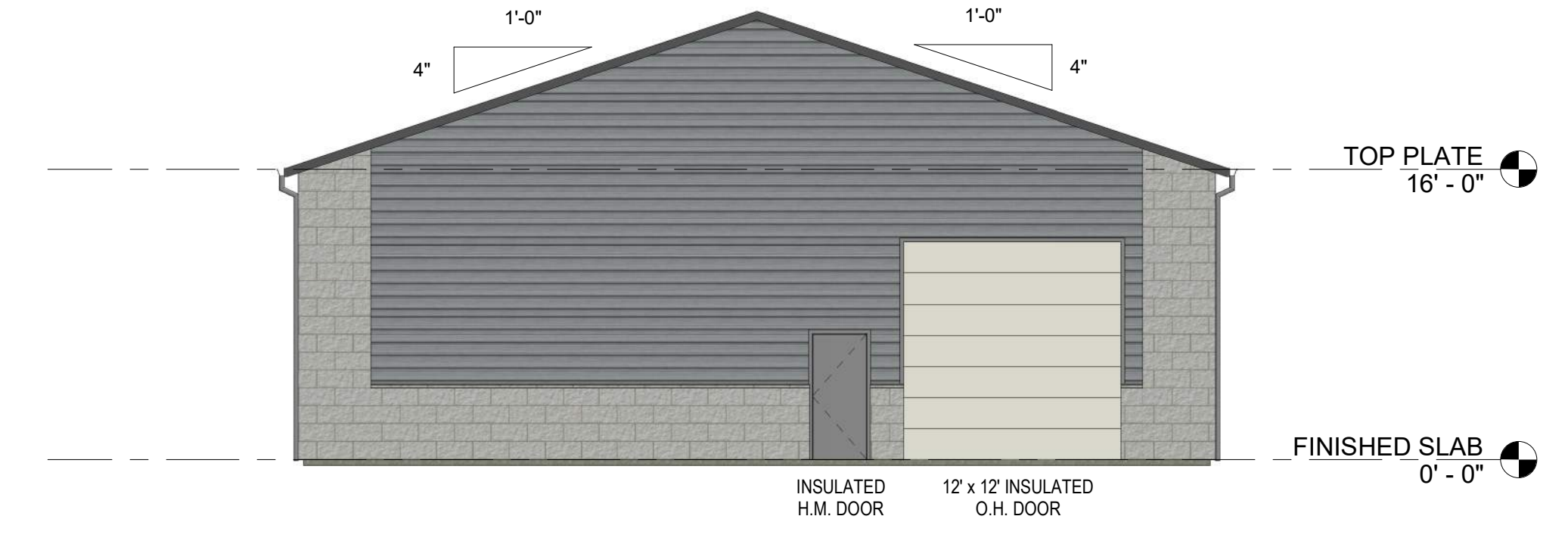
④ WEST ELEVATION
 1/8" = 1'-0"



③ SOUTH ELEVATION
 1/8" = 1'-0"



② EAST ELEVATION
 1/8" = 1'-0"



① NORTH ELEVATION
 1/8" = 1'-0"

NOT FOR CONSTRUCTION

Project: **Laurel Street Commercial Building**
 100 W. Hickman Road,
 Waukege, Iowa 50263

No.	Date	Description

Project no. 19013
 Date: 10/16/2019

Contents:
BUILDING ELEVATIONS

A200