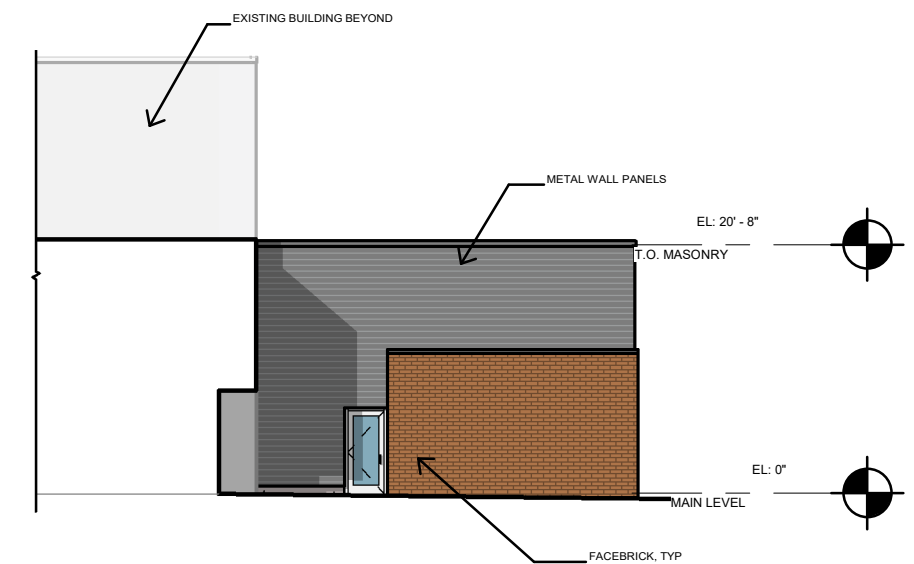
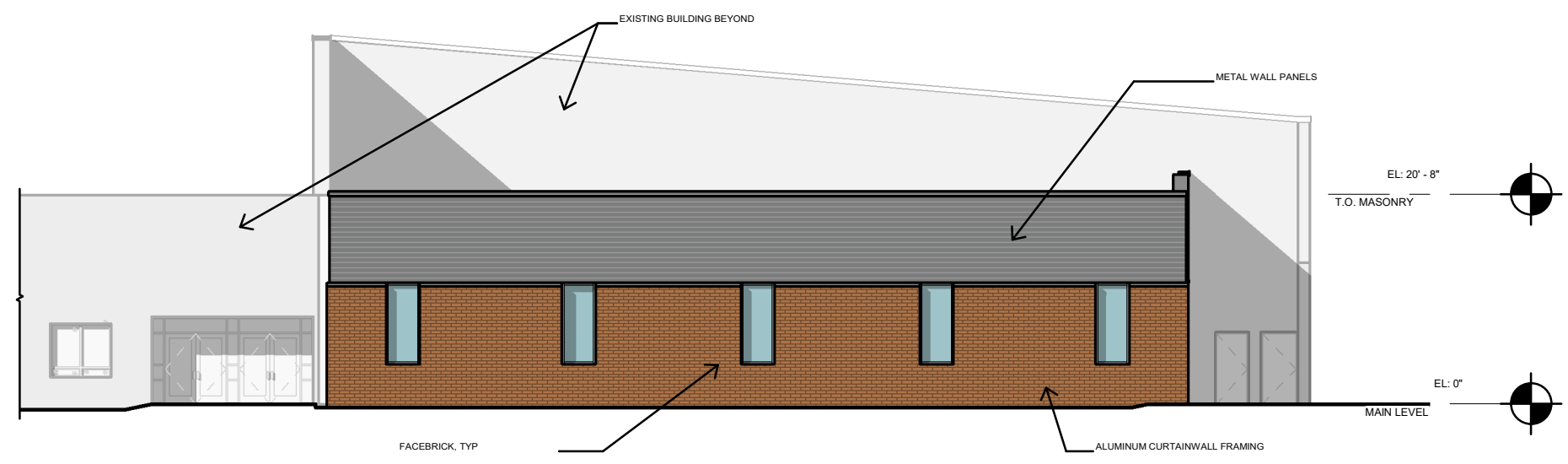


3 DD - WEST ELEVATION  
SCALE: 1/16" = 1'-0"



2 DD - EAST ELEVATION  
SCALE: 1/16" = 1'-0"



1 DD - NORTH ELEVATION  
SCALE: 1/16" = 1'-0"

**MATERIAL BREAKDOWN**

|                         |
|-------------------------|
| FACEBRICK - 53%         |
| METAL WALL PANELS - 39% |
| GLAZING - 8%            |